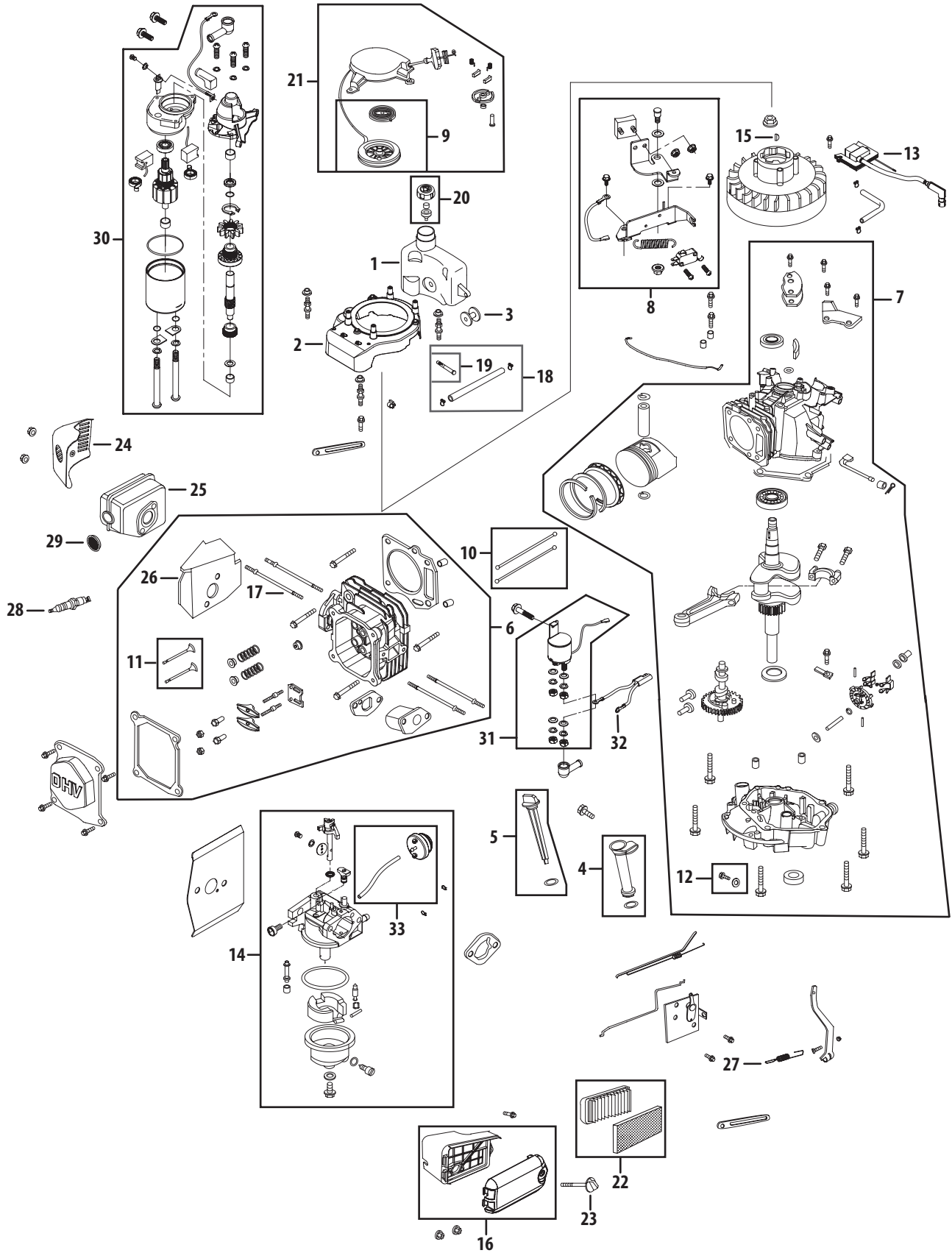


# Engine Model - 2P70MOA



Ref No.	Part Number	Description
1.	751-10368	Fuel Tank
2.	751-10855	Flywheel Shroud
3.	751-10335	Rubber Fuel Tank Mounting Washer
4.	751-10334	Oil Filler Tube Assembly
5.	751-10852	Dipstick Assembly
6.	751-10413	Cylinder Head Complete
7.	751-10857	Short Block Assembly
8.	751-10858	Stop Switch and Brake Assembly
9.	751-10319	Recoil Spring and Pulley Assembly
10.	751-10344	Push Rod Kit
11.	751-10345	Valve Kit
12.	751-10370	Oil Drain Plug and Washer Assembly
13.	751-10854	Ignition Coil
14.	751-10881	Carburetor Assembly
15.	751-10307	Flywheel Key
16.	751-10856	Air Cleaner Housing Assembly Complete
17.	751-10342	Muffler Stud Assembly
18.	751-10364	Fuel Line Kit – Inc. hoses, clamps & filter
19.	751-10358	Fuel Filter
20.	751-10300	Fuel Cap Assembly
21.	751-10299	Recoil Starter Assembly
22.	751-10298	Air Cleaner Kit
23.	751-10297	Air Cleaner Thumb Screw
24.	751-10411	Muffler Guard
25.	751-10403	Muffler
26.	751-10402	Muffler Gasket /Heat Shield
27.	751-10387	Governor Return Spring
28.	751-10292	Spark Plug
29.	751-10351	Spark Arrestor
30.	751-10880	Electric Starter
31.	751-10823	Relay Assembly
32.	751-10824	Relay Harness Connector
33.	751-10888	Primer Assembly
-	752Z2P70MOA	Engine – Complete
-	751-10890	Carburetor Kit – Major
-	751-10859	Cylinder Head Service Kit
-	751-10416	Gasket Kit – Complete
-	751-10417	Gasket Kit – External

**NOTE:** Illustrated parts without a numeric call-out are not servicable components.