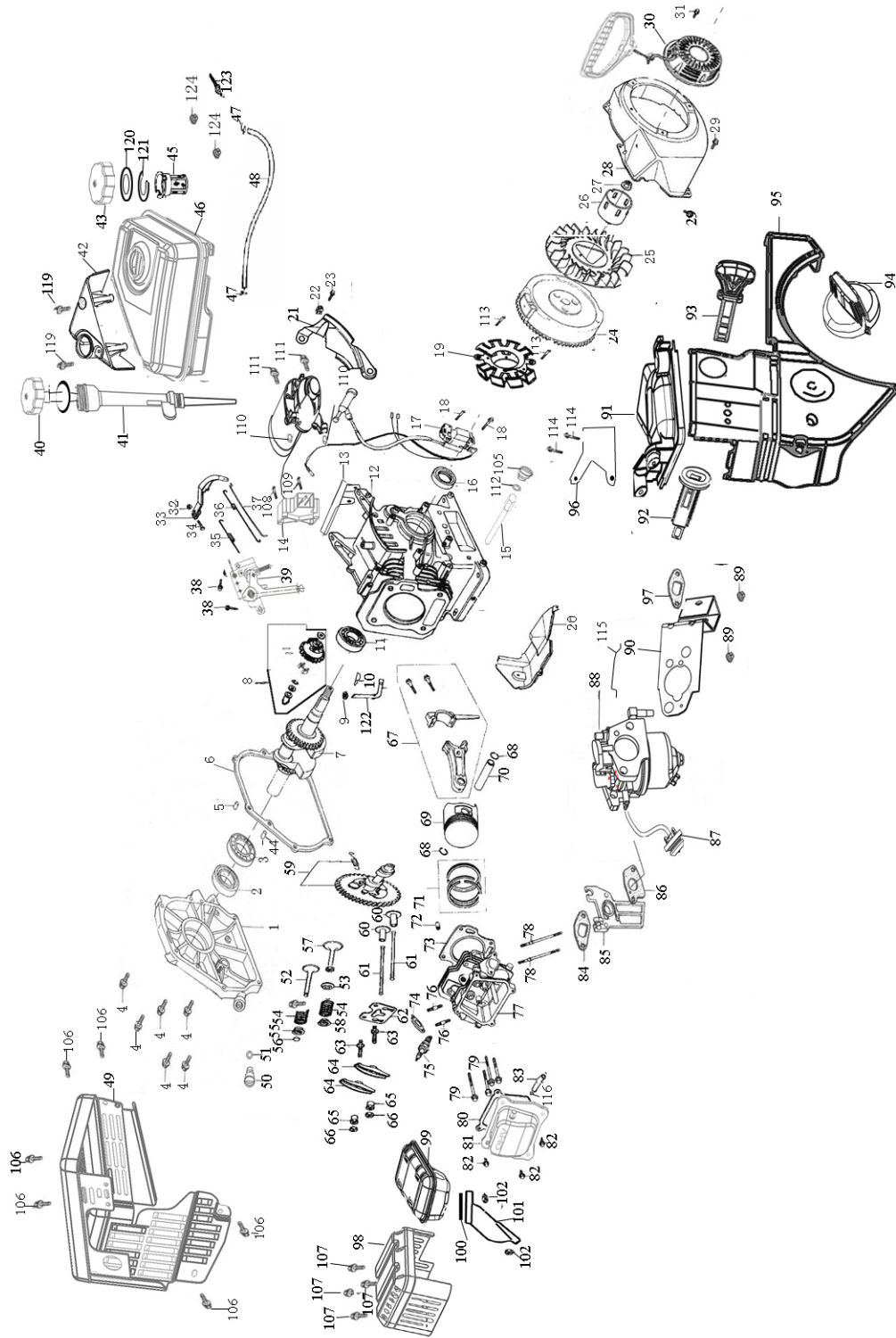


# Cub Cadet Engine (370-SU)



## Cub Cadet Engine (370-SU)

Part No.	Part Description	Ref No.	Qty.	Part No.	Part Description	Ref No.	Qty.	
751-10645	Electric Starter	14	1	751-10660	Gasket Kit Complete			
751-10646	Ignition Coil	17	1		Oil Seal	2	2	
751-10663	Fan Cover Complete	28	1		Crankcase Cover Gasket	6	1	
751-10658	Recoil Starter Assembly	30	1		O-Ring	9	1	
751-10654	Governor Spring	35	1		Cylinder Head Gasket	73	1	
751-10664	Throttle Return Spring	36	1		Muffler Gasket	74	1	
751-10665	Governor Rod	37	1		Head Cover Gasket	80	1	
751-10655	Dipstick	40	1		Carb Insulator Gasket	84	1	
751-10656	Dipstick Tube	41	1		Carburetor Insulator	85	1	
751-10662	Cover - Engine/Dipstick	42	1		Carburetor Gasket	86	1	
751-10652	Fuel Filter	45	1		Air Filter Gasket	97	1	
751-10653	Fuel Tank	46	1		Paper Gasket	100	1	
751-10642	Muffler Shroud	49	1		Oil Drain Washer	112	1	
751-10666	Muffler Gasket	74	1		751-10661	Gasket Kit External		
751-10292	Spark Plug	75	1			Oil Drain Washer	112	1
751-10639	Primer	87	1			Muffler Gasket	74	1
751-10638	Carburetor Assembly	88	1			Carb Insulator Gasket	84	1
751-10635	Air Filter Heating Pipe Cover	91	1			Carburetor Insulator	85	1
751-10637	Ignition Switch	92	1		Carburetor Gasket	86	1	
751-10630	Ignition Key	93	1	Head Cover Gasket	80	1		
751-10636	Choke Lever	94	1	751-10668	Cylinder Head Assembly			
751-10634	Engine Shroud	95	1		Rocker Arm	64	2	
751-10643	Muffler Shield	98	1		Intake Valve	57	1	
751-10640	Choke Push Rod	115	1		Exhaust Valve	52	1	
751-10651	Fuel Tank Nipple	123	1		Valve Spring	54	2	
751-10307	Flywheel Key	N/A	1		Valve Spring Retainers - Exhaust	55	1	
731-05696	Starter Handle	N/A	1		Pivot Adjusting Nut	65	2	
952Z370-SU	Engine Complete	N/A	1		Rocker Arm Lock Nut	66	2	
					Rocker Arm Studs	63	2	
					Push Rod Guide	62	1	
					Valve Cover Gasket	80	1	
					Carburetor Insulator Plate Gasket	84	1	
					Carburetor Insulator Plate	85	1	
					Muffler Gasket	74	1	
Cylinder Head Gasket 170	73	1						
Cylinder Head	77	1						
Exhaust Valve Adjuster	56	1						
Valve Spring Retainer- Intake	58	1						

## Cub Cadet Engine (370-SU)

Part No.	Part Description	Ref No.	Qty.
751-10659	Short Block		
	Crankcase Complete 170	12	1
	Oil Pipe Reserve		
	Crankcase Cover	1	1
	Piston 170	69	1
	Piston Ring Set - Complete 170	71	1
	Piston Pin 170	70	1
	Piston Pin Clip	68	1
	Connecting Rod Assembly Complete	67	1
	Valve Lifter (Tappet)	60	1
	Camshaft Assembly	59	1
	Carb Insulator plate gasket	84	1
	Crankshaft Assembly	7	
	Carburetor Insulator Plate	85	
	Muffler Gasket 170	74	1
	Governor Arm Shaft	122	1
	Pin Lock	10	1
	Governor Assembly	8	1
	Case Cover Gasket	6	1
	Cylinder Head Gasket 170	73	1
	Valve Cover Gasket	80	1
	Oil Drain Bolt	105	1
	Oil Drain Plug Washer	112	1
	Dowel Pin	5	1
	Dowel Pin	44	1
	Dowel Pin	72	2
	Bearing	11	2
	Bolt	4	6
	Oil Seal	2	2
	O-Ring - Governor Arm	9	1
	Oil Filler Plug	50	1
	O-Ring - Oil Filler Plug	51	1
	Oil Drain Pipe	15	1

Part No.	Part Description	Ref No.	Qty.
751-10641	Oil Drain Assembly		
	Oil Drain Pipe	15	1
	Drain Bolt	105	1
751-10647	Valve Kit		
	Exhaust Valve	52	1
	Intake Valve	57	1
751-10648	Push Rod Kit		
	Push Rod	61	2
751-10649	Fuel Cap Assembly		
	Fuel Cap Complete	43	1
	Packing ( Gasket )	120	1
	Clip ( Gasket Retainer )	121	1
751-10650	Fuel Line Kit		
	Fuel Line Clamp	47	2
	Fuel Line	48	1
751-10657	Muffler Stud Assembly		
	Muffler Stud	78	2
751-10669	Oil Fill Plug Assembly		
	Oil Fill Plug	50	1
	O-Ring	51	1
751-10644	Muffler Assembly Complete		
	Muffler Assembly		1
	Exhaust Pipe		1