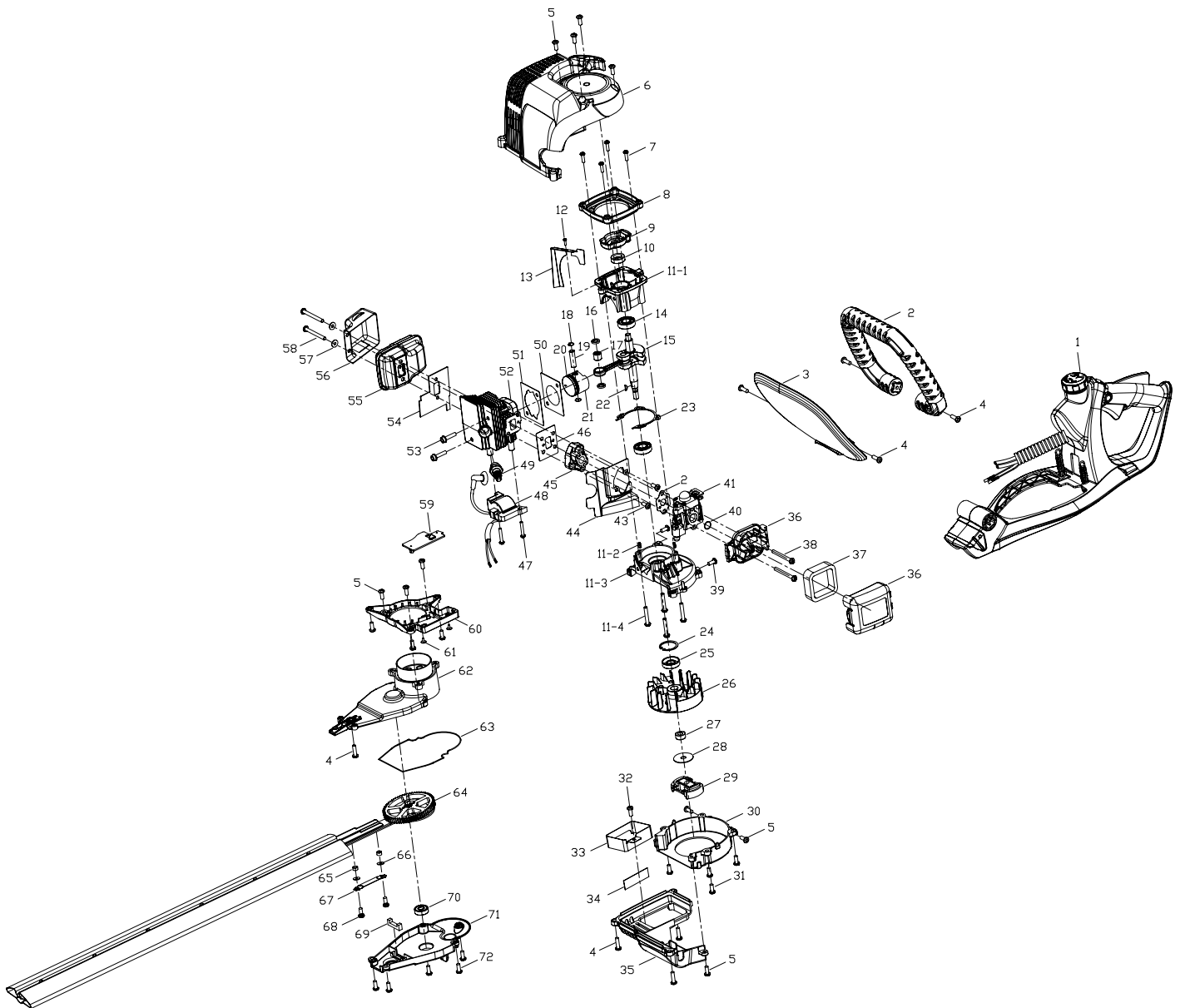


| | | | |
|---------------------------------------|---------------------|------------|--------------|
| SPECIFY MODEL NO. WHEN ORDERING PARTS | | DATE | REVISED DATE |
| 25CC Hedge Trimmer | | 11/18/2005 | N/A |
| MODEL NO. | 41AQ25HG711/TB25GHT | | |



| Ref No | Part Number | Description |
|-------------|--------------------------|------------------------------|
| 1 | 9228-MD2004 | HOUSING ASS'Y |
| 2 | 9068-MD2001 | HANDLE |
| 3 | 9263-MD2001 | GUARD |
| 4 | 9SGKBY10/14-0.625 | SCREW |
| 5 | 9SGKB-05-12.5 | SCREW |
| 6 | 9228-MD2012 | STARTER HOUSING ASS'Y |
| 7 | 9SGKBM04-12 | SCREW |
| 8 | 9081-MD1801 | CONNECT CASE |
| 9 | 9228-MD2017 | PAWLS ASS'Y |
| 10 | 9157-332101 | OIL SEAL |
| 11 | 9228-MD0109自 | CRANK CASE ASS'Y |
| 11-1 | 9151-MD0102F | CRANK CASE (STARTER) |
| 11-2 | 6PC03-08 | PIN |
| 11-3 | 9151-MD0101F | CRANK CASE (FLYWHEEL) |
| 11-4 | 9SRCBM05-30 | SCREW |
| 12 | 9SQKB-04-08 | SCREW |
| 13 | 9082-MD2003 | BAFFLE CYLINDER |
| 14 | 9DB-600102 | BALL BEARING |
| 15 | 9228-MD0112A | CRANK ASS'Y |
| 16 | 9057-MD0201 | SPACER, PISTON |
| 17 | 9NR-081190 | NEEDLE BEARING |
| 18 | 9131-MD0101 | CLIP PISTON |
| 19 | 9115-MD1501-CH | PIN PISTON |
| 20 | 9189-MD1501 | PISTON RING |
| 21 | 9290-MD1501 | PISTON |
| 22 | 9221-310001 | KEY (FLYWHEEL) |
| 23 | 9014-MD0102 | CRANK CASE GASKET |
| 24 | 9CB-28 | C-CLIP |
| 25 | 9157-MD1501 | OIL SEAL |
| 26 | 9151-MD0103 | FLYWHEEL |
| 27 | 9131-MD0201 | SPACER |
| 28 | 9057-332101 | WASHER |
| 29 | 9228-MD2006 | CLUTCH ASS'Y |
| 30 | 9017-MD2003 | CRANK CASE COVER |
| 31 | 9SKKB-05-16 | SCREW |
| 32 | 9SKKBB04-10 | SCREW |
| 33 | 9082-MD2002 | BAFFLE |
| 34 | 9082-MD2006 | BAFFLE |
| 35 | 9017-MD2010 | ENGINE COVER |
| 36 | 9228-MD1507 | AIR CLEANER ASS'Y |
| 37 | 9183-MD0101 | FILTER AIR |
| 38 | 9SKKBM05-64 | SCREW |
| 39 | 6SDAB-05-08 | SCREW |
| 40 | 9012-MD0101 | O-RING (AIR) |

| Ref No | Part Number | Description |
|--------|-----------------------|----------------------------|
| 41 | 9287-MD1501 | CARBURETOR |
| 42 | 9014-MD2007 | GASKET (CARBURETOR) |
| 43 | 9SKKB-05-19 | SCREW |
| 44 | 9211-MD2001 | PLATE |
| 45 | 9072-MD1501 | INSULATOR |
| 46 | 9014-MD1504 | GASKET (INSULATOR) |
| 47 | 9SQKBM04-20 | SCREW |
| 48 | 9228-MD1802 | IGNITION ASS'Y |
| 49 | 9111-310002-CH | SPARK PLUG |
| 50 | 9014-MD2006 | GASKET CYLINDER |
| 51 | 9014-MD1505 | GASKET CYLINDER |
| 52 | 9292-MD1501F 白 | CYLINDER |
| 53 | 9SRCB-05-22 | SCREW |
| 54 | 9014-MD2002 | GASKET MUFFLER |
| 55 | 9228-MD2008 | MUFFLER ASS'Y |
| 56 | 9082-MD2005 | BAFFLE |
| 57 | 9WFB-5.64-12 | WASHER |
| 58 | 9SXMBJ05-53 | SCREW |
| 59 | 9017-MD2004 | COVER |
| 60 | 9072-MD2001 | BRAKE COVER |
| 61 | 9SLAZB2.5-6 | SCREW |
| 62 | 9228-MD2013 | BRAKE ASS'Y |
| 63 | 9014-MD2003 | WASHER |
| 64 | 9228-MD2014 | GEAR ASS'Y |
| 65 | 9062-MD2001 | SPACER |
| 66 | 9WFB-5.1-18 | WASHER |
| 67 | 9158-MD2003 | STEEL BOARD |
| 68 | 9SXQAB05-20 | SCREW |
| 69 | 9157-MD2001 | FELT |
| 70 | 6MB-608-06 | BEARING |
| 71 | 9217-MD2002 | PLATE |
| 72 | 9SKKBM05-15 | SCREW |