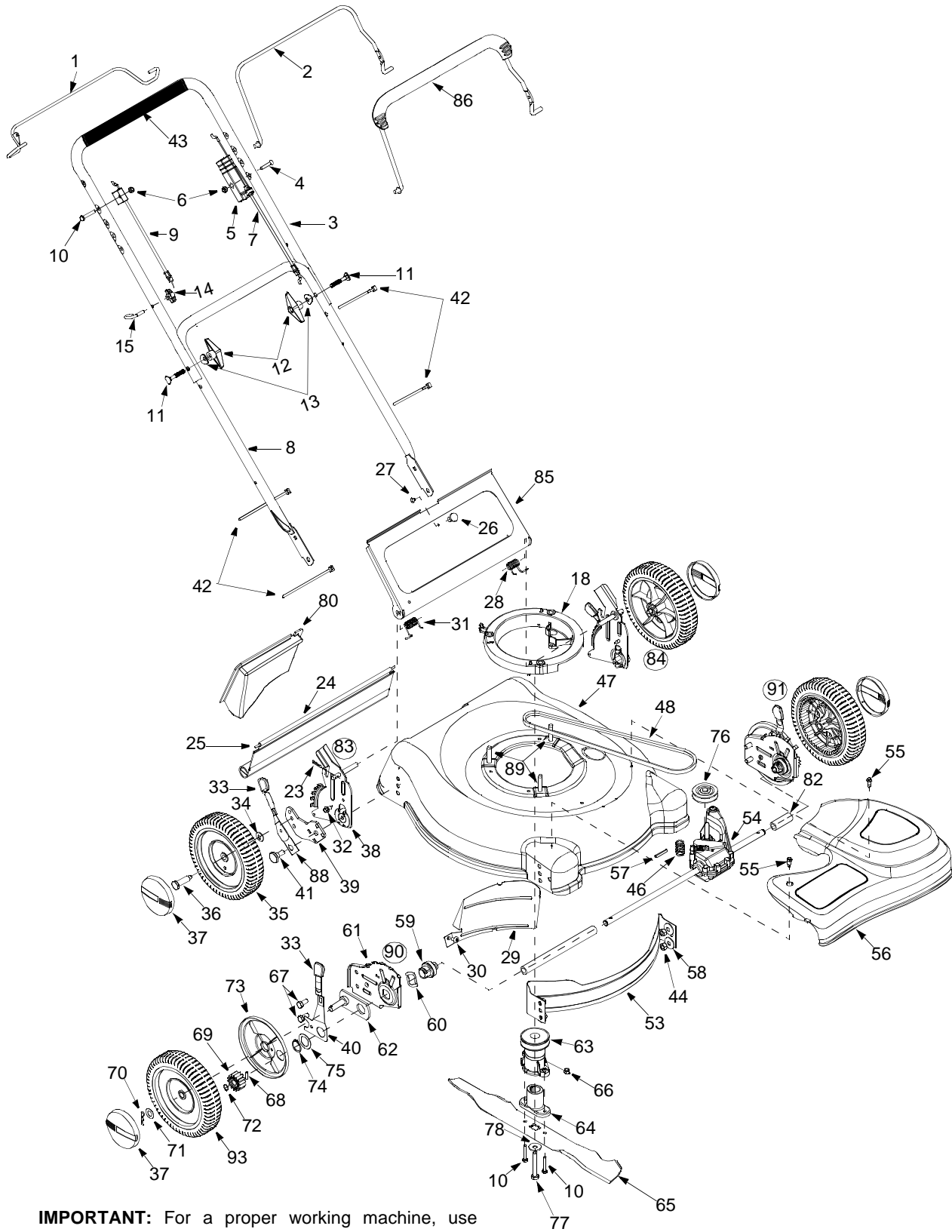


# Model Series 440 Thru E459



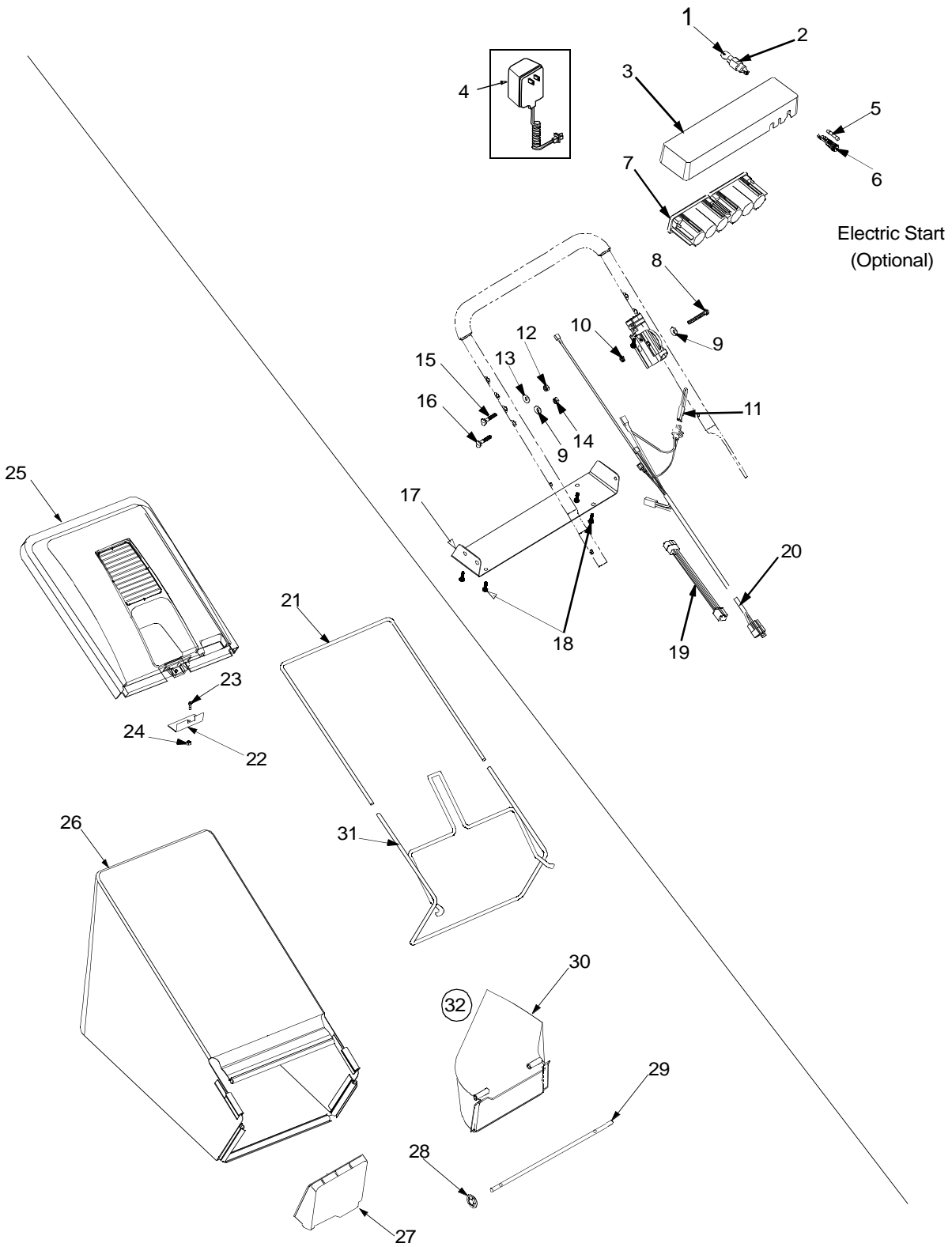
**IMPORTANT:** For a proper working machine, use Factory Approved Parts.  
**V-BELTS** are specially designed to engage and disengage safely. A substitute (non OEM) V-Belt can be dangerous by not disengaging completely.

# Model Series 440 Thru E459

Ref. No	Part No.	Description	Ref. No	Part No.	Description
1.	747-2136	Lower Bail Handle	49.	731-1404A	Mulch Plug
2.	747-0824	Blade Control Handle	50.	751B224437	Muffler Guard (Quantum only) ‡
	647-0004	Deluxe Control Lever	51.	751B224511	Flywheel Grd. (Quantum/Intek only) ‡
3.	749-1230	Upper Handle	53.	782-5002	Front Baffle
4.	710-1270	Oval C-Sunk Scr. 1/4-20 x 1.31"	54.	618-0657	Transmission Assembly Compl.
5.	746-0883	Control Housing	55.	7510042824	Screw #12 x 0.457"
6.	712-0324	Hex Lock Nut 1/4-20	56.	731-2600	Front Drive Cover: Yellow
7.	746-0551	Control Cable: 43"		731-1937A	Front Drive Cover: Black
	746-0555	Control Cable: 55"	57.	715-0169	Roll Pin
8.	749-0928A	Lower Handle	58.	736-0331	Bell Washer
9.	746-1146	Drive Cable	59.	748-0355	Bearing Support
10.	710-0606	Hex Screw 1/4-20 x 1.5"	60.	736-0447	Wave Washer
11.	710-1174	Carriage Bolt	61.	782-0511A	Height Adj. Plate LH
12.	720-0284	Handle Knob		782-0512B	Height Adj. Plate RH
13.	736-0451	Saddle Washer	62.	682-0509	Pivot Plate Assembly
14.	720-0279	Wing Nut	63.	756-1146A	Drive Pulley
15.	710-1205	Rope Guide	64.	748-0411	Blade Adapter
18.	631-0075B	Engine Spacer Assembly	65.	742-0741	Mulching Blade w/ Star: 21"
23.	714-0104	Hairpin Clip		742-0641	Standard Blade 21"
24.	731-1236	Rear Trail Shield	66.	712-0324	Hex Lock Nut
25.	732-0700	Wire: Trail Shield	67.	710-0216	Hex Screw
26.	720-0275	Knob	68.	715-0221	Dowel Pin
27.	710-0192	Scr. Tr. Mach. #10-24 x 0.380"	69.	717-1762	Gear 14T RH
28.	732-0677	Torsion Spring LH		717-1761	Gear 14T LH
29.	782-5003	Rear Baffle LH	70.	714-0101	Hairpin Clip
30.	710-1017	Scr. AB 1/4-14 x 0.625"	71.	736-3013	Flat Washer
31.	732-0678	Torsion Spring RH	72.	716-0865	Snap Ring
32.	710-0896	Hex Scr. w/ Wash. 1/4-14 x 0.62"	73.	782-7551	Wheel Dust Cap
33.	720-0426	Knob	74.	716-0102	Snap Ring
34.	736-0105	Bell Washer .375 x .870	75.	736-0474	Washer DD 1.5" O.D.
35.	634-0020	Rear Wheel: Disk Bar Gray	76.	756-1231	Input Pulley
36.	738-0102	Shoulder Screw	77.	710-1257	Hex Bolt
37.	720-0249	Hubcap: Euro Gray	78.	736-0452	Bell Washer
	731-0981A	Hubcap: Radial Spoke Gray	80.	782-5004	Rear Baffle RH
38.	682-0513	Handle Bracket Assembly LH	82.	750-1166	Slev. Spacer LH
	682-0514	Handle Bracket Assembly RH		750-1165	Slev. Spacer RH
39.	14766	Pivot Bar LH	83.	682-0516A	Handle Bracket Assembly RH Compl.
	14765	Pivot Bar RH	84.	682-0515A	Handle Bracket Assembly LH Compl.
40.	732-0706	Front Lever RH	85.	782-7000	RD Chute Door
	732-0707	Front Lever LH	86.	731-2623	Bail Cover
41.	738-0507B	Shoulder Screw	87.	732-0731	Torsion Spring
42.	726-0240	Cable Tie	88.	732-0417A	Spring Lever
43.	720-0295	Foam grip	89.	710-1008	TT Screw
44.	712-0798	Hex Nut	90.	682-0512A	Height Adj. Assembly RH Compl.
45.	736-0356	Flat Washer	91.	682-0511A	Height Adj. Assembly LH Compl.
46.	732-1043	Belt Tension Spring	92.	710-1248	Weld Pin
47.	782-0080A	Rear Discharge Deck: 21"	93.	634-0021C	Wheel, 8x2 x 1.75
48.	754-0637	V-Belt			

‡ If Equipped

# Model Series 440 Thru E459



# Model Series 440 Thru E459

Ref. No.	Part No.	Description
1	725-0201	Ignition Key †
2	725-0873	Key Switch †
3	731-0891A	Battery Tray †
4	725-0727	Battery Charger †
5	725-0298	Fuse 7.5 Amp †
6	725-1428	Fuse Holder †
7	725-1276	Battery 12V †
8	710-0501	Hex Screw:1/4-20:2.0 †
9	736-0270	Bell Washer .265 x .75 x .062 †
10	712-0329	Special Hex Nut 5/16-18 †
11	725-1206	Plug †
12	712-0267	Nut 5/16-18 †
13	736-0242	Bell Wash .340 ID x .872 OD †
14	712-0287	Hex Nut 1/4-20 †
15	710-1250	Carriage Bolt 5/16-18 x 1 †
16	710-0111	Carriage Screw †
17	782-9012	Lower Battery Tray †
18	710-0969	Tapp Screw †
19	725-1538	Harness Extension †
20	625-0022	Harness †
21	764-0310	Rear Catcher Frame
22	782-9011	Mounting Bracket
23	710-0286	Hex Screw 1/4 -20 x .5
24	712-0324	Hex Nylon L-Nut 1/4-20
25	731-1322A	Hardtop Cover w/o Logo: Blk. †
	731-1876	Hardtop Cover w/Logo: Blk. †
	764-0433	Grassbag for Hardtop Assy
26	764-0476A	Grass Bag: Soft Top w/ Logo
	764-0309	Grass Bag: Soft Top w/o Logo ‡
	764-0650	Grass Bag w/ Half Sail ‡
	764-0651	Grass Bag w/ Full Sail ‡
27	782-5007A	Mulcher Plug
28	726-0201	Nut: Spd. .3125 ID
29	711-0996	Rod
30	731-1405	Side Discharge Adapter†
31	764-0311	Front Catcher Frame
32	190-104-000	Chute Deflector Complete †

† If equipped

‡ Not shown