



Service Kit 753-04027

CODE: ST-172

DATE: February 19, 2002

SUBJECT: Electric to Manual Chute
Rotation Conversion

MODELS 2 Stage Walk Behind Snow
AFFECTED: Throwers with Electric Chute
Crank Feature.

Use this service kit when it is desired to replace the Electric Chute Rotation feature with a Manual Chute Rotation.

IMPORTANT: Do not remove or disconnect the electrical harness or the switches for chute rotation and heated hand. The heated hand grips feature will not be affected by this change.

Typical Installation Time: 45 Minutes

Service Kit Contents

REF. NO.	PART NUMBER	QTY	DESCRIPTION
1	684-0053B-0637	1	Crank Assembly, Chute, Lower (Powder Black)
2	705-5266-0637	1	Bracket (Upper), Crank, Chute (Powder Black)
3	747-0737-0637	1	Crank, Chute, Upper (Powder Black)
4	784-5647-0637	1	Bracket, Crank, Chute
5	710-3015	7	Screw, Hex Hd 1/4"-20 x .75" Lg. Gr 5
6	714-0104	1	Pin, Cotter, Internal
7	714-0145	1	Pin, Cotter, Internal
8	720-0201A	1	Knob, Crank, Chute
9	726-0100	1	Cap, Push
10	736-0185	2	Washer, Flat .406 ID x .75 OD x .060
11	736-0270	2	Washer, Bell .250 ID x .75 OD x .060
12	741-0475	2	Bushing, Plastic .380 ID
13	712-3027	7	Nut, Lock, Hex Flange 1/4" -20
14	712-3010	2	Nut, Hex 5/16"-18
15	710-0451	2	Bolt, Carriage 5/16"-18 x .75" Lg
16	736-0242	2	Washer, Bell .343 ID x .875 OD x .06
17	726-0240	3	Tie, Plastic

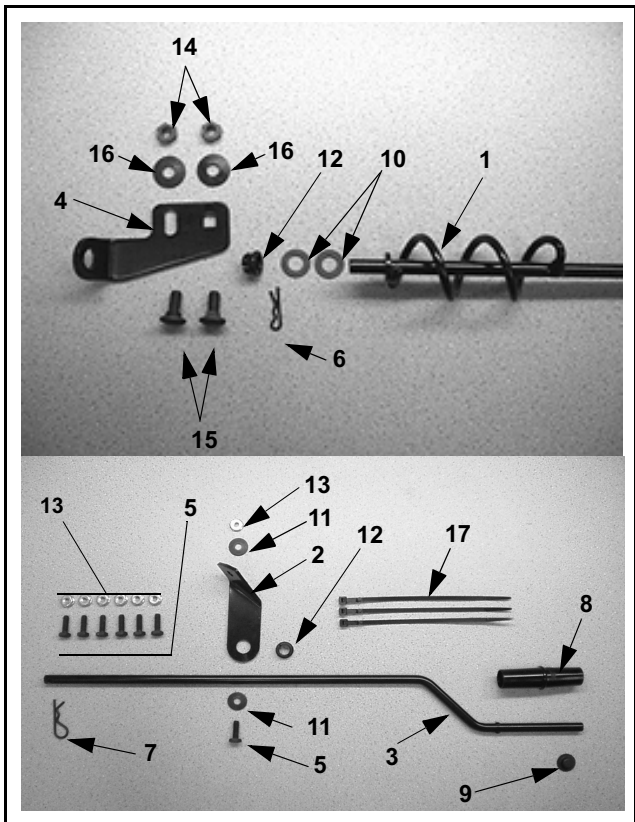


FIGURE 1

Electric Motor Removal:

Refer to your Owner's Manual to identify snow thrower components referred to in the following instructions. Components removed that are designated with an asterisk (*) may be discarded or saved at your discretion.

NOTE: Before proceeding - Disconnect the booted wire from the spark plug and ground to the engine block.

1. Remove the two (2) screws* that hold the plastic cover over the electric motor. Remove the cover*.
2. Disconnect the electrical connector from the electric motor.
3. Re-route the electric motor harness up along the main harness running from the right side of the frame up towards the handle panel. Ensure that the loose connector end is protected up under the handle panel and not in contact with any metal hardware. Secure with Tie Wraps, Item 17. See Figure 1.

4. Remove the two bolts* that attach the motor bracket to the Chute Adapter.
5. Remove the two hex nuts and lock washers that hold the metal motor mounting bracket to the auger housing's threaded studs. Remove the electric motor* and bracket*.
6. Remove the six (6) 1/4"-20 hex nuts* and 1/4"-20x .75 hex screws* that hold the ring gear assembly and Lower Chute Flange Keepers to the Lower Chute. Remove the ring gear*. Retain the Lower Chute and three Lower Chute Flange Keepers.
7. This completes the removal of the electric motor chute crank hardware.

Service Kit 753-04027

Page 1 of 2

Form No. 769-00077
(02/2002)

MTD Form



Manual Chute Crank Installation:

1. Clean the mating surfaces of the Chute Adapter and Lower Chute. Refer to Figures 2 & 3.
2. Place the Lower Chute over the Chute Adapter opening with the Lower Chute's opening toward the front of the unit.
3. One at a time, place the three (3) Lower Chute Flange Keepers, removed in Step 6 above, beneath the lip of the Lower Chute. Place the Keeper's flat side facing down. The stepped side of the Keeper catches under the lip on the Chute Adapter. Align the two holes in the Keeper with a pair of holes in the Lower Chute.
4. Attach each Keeper with two (2) Hex Hd Screws, Item 5, and Hex Flange Lock Nuts, Item 13. The Hex Hd Screws are placed from the underside up through the Keepers then through the Lower Chute. CAUTION: DO NOT OVER TIGHTEN SO THAT PLASTIC LOWER CHUTE OR LOWER CHUTE FLANGE KEEPERS ARE DEFORMED.
5. Refer to Figure 2. Attach Chute Crank Bracket, Item 4, to the slotted flange on the Chute Adapter with two (2) Carriage Bolts, Item 15, Bell Washers, Item 16, and Hex Nuts, Item 14. Tighten finger tight only.
6. Insert a Bushing, Item 12, into the hole in the Chute Crank Bracket (Upper), Item 4. See Figure 2.
7. Refer to Figure 5. Place the Chute Crank Knob, Item 8, over the short end of the Upper Chute Crank, Item 3. Ensure that the recessed end of the Knob faces the two bosses on the Upper Chute Crank, Item 3. Secure with Push Cap, Item 9.
8. Press the second Plastic Bushing, Item 12, into the Chute Crank Bracket (Upper), Item 2.
9. Attach Chute Crank Bracket (Upper) with Bushing subassembly to the left rear slotted hole in the Handle Panel's metal frame with one (1) Hex Head Screw, Item 5, two (2) Bell Washers, Item 11 and one (1) Hex Nut, Item 13. See Figure 4. Tighten finger tight only.
10. Place Upper Chute Crank Subassembly through the Bushing in the Chute Crank Bracket (Upper).
11. Assemble the Upper Chute Crank Subassembly to the Lower Chute Crank Assembly, Item 1, and secure with Internal Cotter Pin, Item 7.
12. Place one (1) Flat Washer, Item 10, on the spiral end of the Lower Chute Crank. Place the Lower Chute crank into the Plastic Bushing, Item 12, in the Chute crank Bracket, Item 4, attached to the Chute Adapter.
13. Place the second Flat Washer, Item 10, on the end of the Lower Chute Crank. Secure the Lower Chute Crank to the Chute Crank Bracket with Internal Cotter Pin, Item 6. There should be a flat washer on each side of the plastic bushing.

Adjustment of Manual Chute Crank:

1. Position the Chute Crank Bracket, Item 4, so that the spiral on the Lower Chute Crank, Item 1, fully engages the slots on the Lower Chute. Tighten the two (2) Hex Nuts, Item 14. See Figure 2.
2. Align the Chute Crank Bracket (Upper), Item 2, so that the Chute Crank rotates freely. Tighten the Hex Nut, Item 13, at the slotted hole in the handle panel metal under structure.
3. Rotate chute in both directions. Ensure that spiral does not disengage from Lower Chute's teeth (slots). Readjust Chute Crank Bracket as necessary.

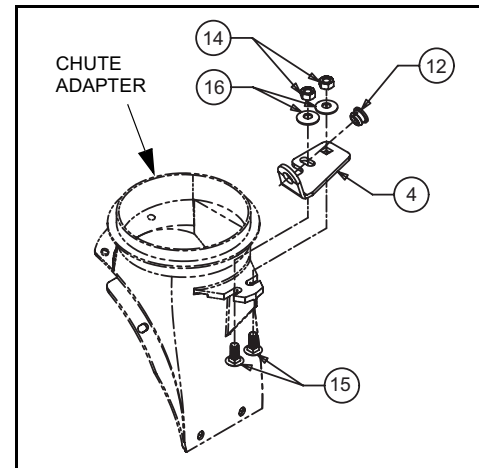


FIGURE 2

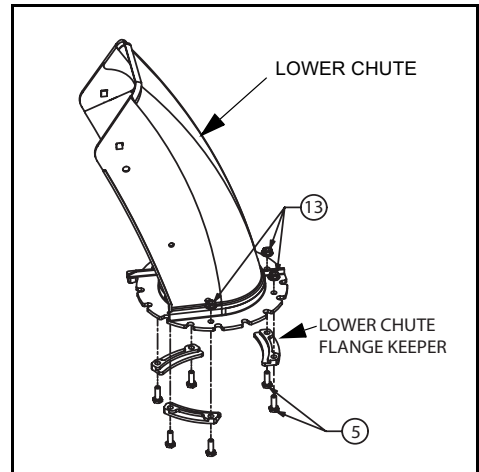


FIGURE 3

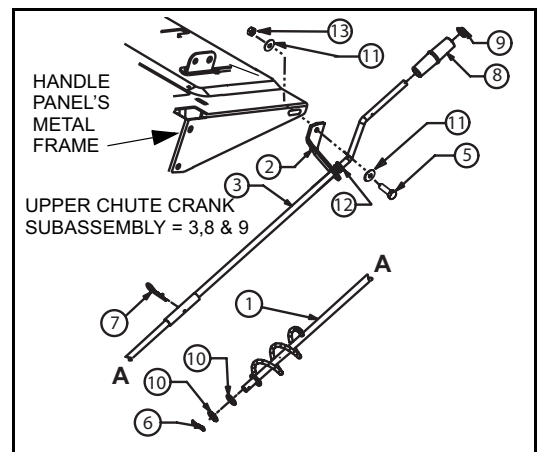


FIGURE 4