

753-0695

28" TILLER

ATTACHMENT

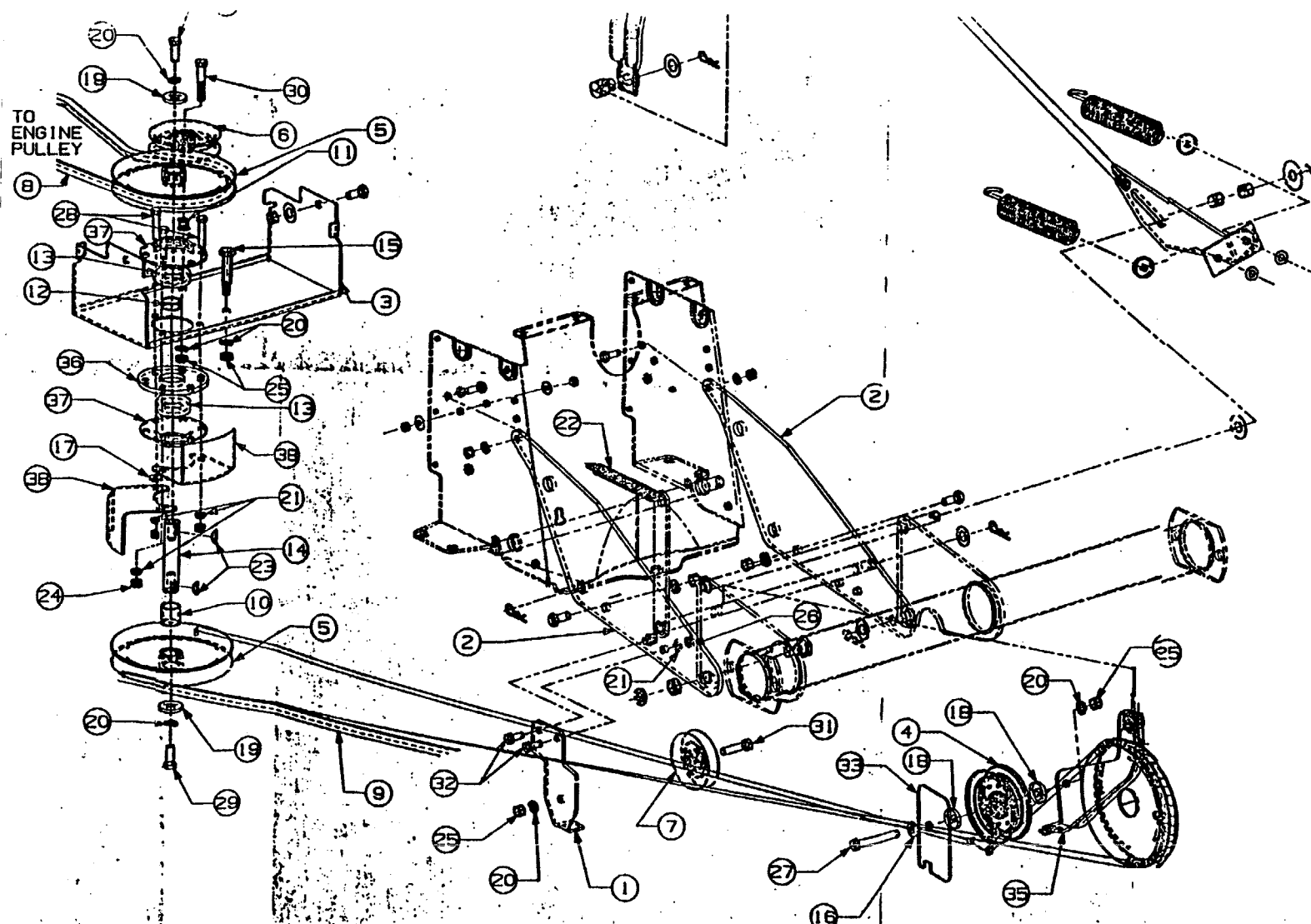
KIT

Updates 756 tiller

to →

MODEL 757

TO ENGINE PULLEY



NOT VALID
NOT VALID

38	05-106	2	GUARD:BELT
37	08253B	2	HCS:BRG 1.63 ID
36	14088B	1	PLT:SPDL SPCR
35	603_0301	1	ASM:IDLER BRACKT
34	689_0002	1	BRKT ASM:LIFT
33	703_2732	1	PLT:BELT GUARD
32	710_0119	2	HCS:15/16-18:7
31	710_0344	1	HCS:3/8-16:11.5
30	710_0427	1	SCR:HEX CAP:3/8
29	710_0591	2	SCR:HEX CAP:PATCH
28	710_0624	3	HCS:15/16-24:11.5
27	710_0859	1	SCR:3/8-16 12.5
26	712_3010	2	NUT:15/16-18:GRD
25	712_3017	4	NUT:3/8-16:GRD:HI
24	712_3057	3	NUT:15/16-24:GRD
23	714_0181	2	KEY:HI-PRO 3/16
22	732_0384	1	SPR:EXTN:1.62 DI
21	736_0119	5	WASH:LOCK: 5/16
20	736_0189	8	WASH:LOCK: 3/8
19	736_0247	2	FLAT WASH 3/8 X
18	736_0280	2	WASH:FL 1.395 ID
17	736_3008	1	WASH:FL:1.344X.7
16	736_3010	1	WASH:FL:1.407 X
15	738_0533	1	SCR:SHLD:1.49
14	738_0680	1	SHF:1.787 DIAX:3
13	741_0919	2	BRG:BALL:1787 ID
12	750_0456	1	SPCR:1.780 ID X
11	750_0487	1	SPCR:1.375 ID X
10	750_0680	1	SPCR:1.601DX:1.00
9	754_0181	1	BELT:V: 1/2 X 1
8	754_0229	1	BELT:V:1/2 X 5
7	758_0116	1	PUL:IDLER:V TYPE
6	758_0405	1	IDLER:FL:W/FLG:
5	758_0439	2	PUL:V TYP:6.50
4	758_3078	1	PULLET:FLAT IDL
3	784_0054A	1	BRKT:CARR
2	789_0002	2	BRKT:SLPT:PIVO
1	789_0003	1	BRKT:IDLR
ITEM NO.	PART NO.	QTY	DESCR

NOTE:
THIS KIT IS FOR CONVERTING
A 190-758 ATCH TO A 7513

PROJECT INFORMATION		DRAWN BY		DATE	
PROJ. NO.	1903	MUSAT	3/26/87		
SIMILAR PART		CHECKED BY		DATE	
		APPR. BY	Miller	03/26/87	
		MATERIAL			
FINISH		LIST OF MATERIAL			
		ITEM DESCRIPTION		KIT:ATCH:757 TILLER	
SIZE	C	ITEM TYPE		ITEM NO.	753
SCALE	1/1	FILE		EST. WT.	

MTD PRODUCTS
P.O. BOX 368
CLEVELAND, OH