

Service Kit 753-0877

CODE: T-151

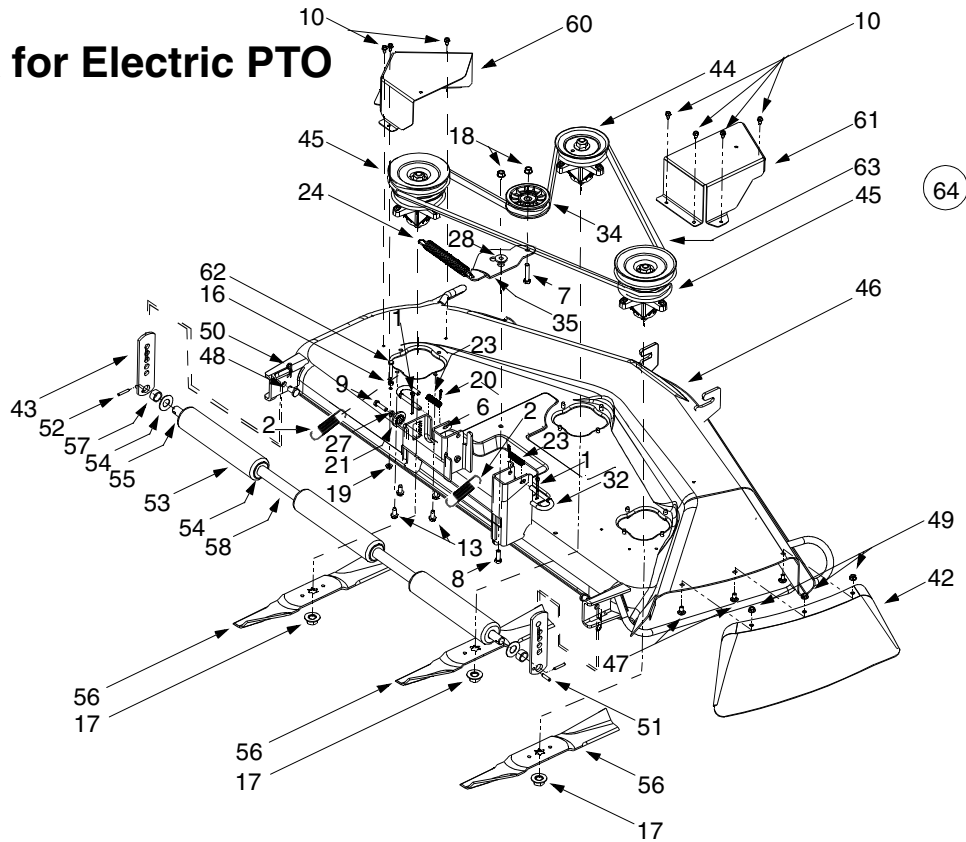
DATE: November 8, 2000

SUBJECT: 50" Deck Replacement

MODELS AFFECTED: 800 through 819 with Electric PTO

Use this parts sheet when ordering any replacement parts for the cutting deck.

50-inch Deck for Electric PTO



REF. NO.	PART NO.	DESCRIPTION
1	714-0470	Cotter Pin, 1/8 x 1.25
2	732-0934	Extension Spring, 1.15 Dia. x 5,99
4	683-0254	Deck Adjustment Bracket w/ Weld Nut
7	710-0347	Hex Cap Screw, 3/8-16 x 1.75
8	710-0514	Hex Cap Screw, 3/8-16 x 1.0
9	710-0528	Hex Cap Screw, 5/16-18 x 1.25
10	710-0599	Self Tapping Screw, 1/4-20 x .5
11	710-0650	Self Tapping Screw, 5/16-18 x .875
16	712-0291	Center Lock Nut, 1/4-20
17	712-0417A	Hex Flange Nut, 5/8-18
18	712-0431	Flange Lock Nut, 3/8-16
19	712-3027	Hex Flange Lock Nut, 1/4-20
21	717-1553A	Deck Adjustment Gear
23	732-0306	Compression Spring, .406 x .531 x 1.75
24	732-0594A	Extension Spring, .91 x 7.33
27	736-0119	Lock Washer, 5/16
28	738-0347	Shoulder Spacer, .625 x .169
32	747-1116	Deck Release Pin
34	756-0627B	Flat Idler Pulley, 3.5 OD
35	783-0139A	Idler Bracket
42	12649	Chute Guard
43	12650	Height Adjustment Bracket

REF. NO.	PART NO.	DESCRIPTION
44	618-0428	Center Spindle Ass'y, 5 Dia. w/ Fitting
45	618-0429	Double Pulley Spindle Ass'y w/ Fitting
46	683-0196	50-inch Deck Shell
47	710-0260	Carriage Bolt, 5/16-18 x .62
48	711-0332	Clevis Pin, .50 Dia. x .78
49	712-3004A	Hex Flange Lock Nut, 5/16-18 (Grade 5)
50	714-0145	Click Pin, .092 x 1.64
51	715-0108	Spring Pin, 1/4 Dia. x 1
52	715-0246	Spring Pin, 3/16 x 1.25
53	731-0335	Deck Roller
54	736-0316	Flat Washer, .78 x 1.59 x .06
55	738-0295	Deck Roller Shaft, .75 Dia. x 47.12
56	742-0623	Blade, Star Center, 17.3
57	750-0212	Spacer, .752 x 1.0 x .53
58	750-0288	Spacer, .82 x 1.0 x 5.75
59	754-0291A	PTO Belt (Not shown)
60	783-0746	Belt Cover, L.H.
61	783-0793	Belt Cover, R.H.
62	710-0501	Hex Cap Screw, 1/4 - 20 x 2.00
63	754-0475	Deck Belt
64	753-0877	50-inch Deck Assembly Complete