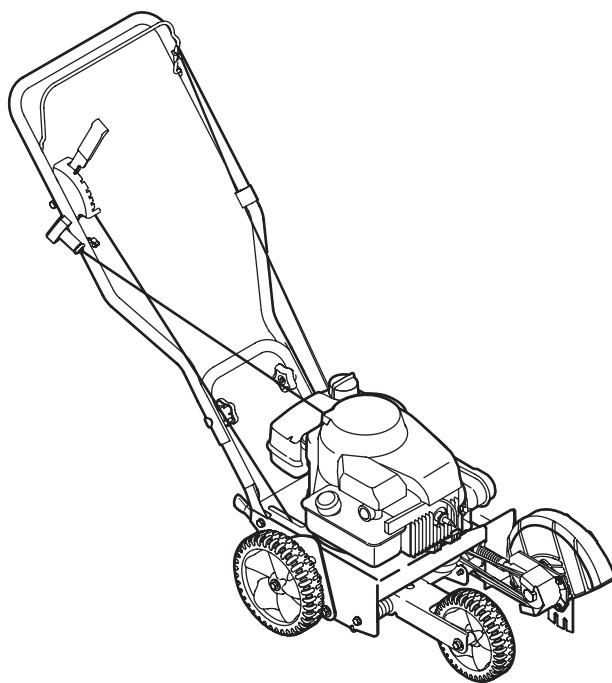


OPERATOR'S MANUAL



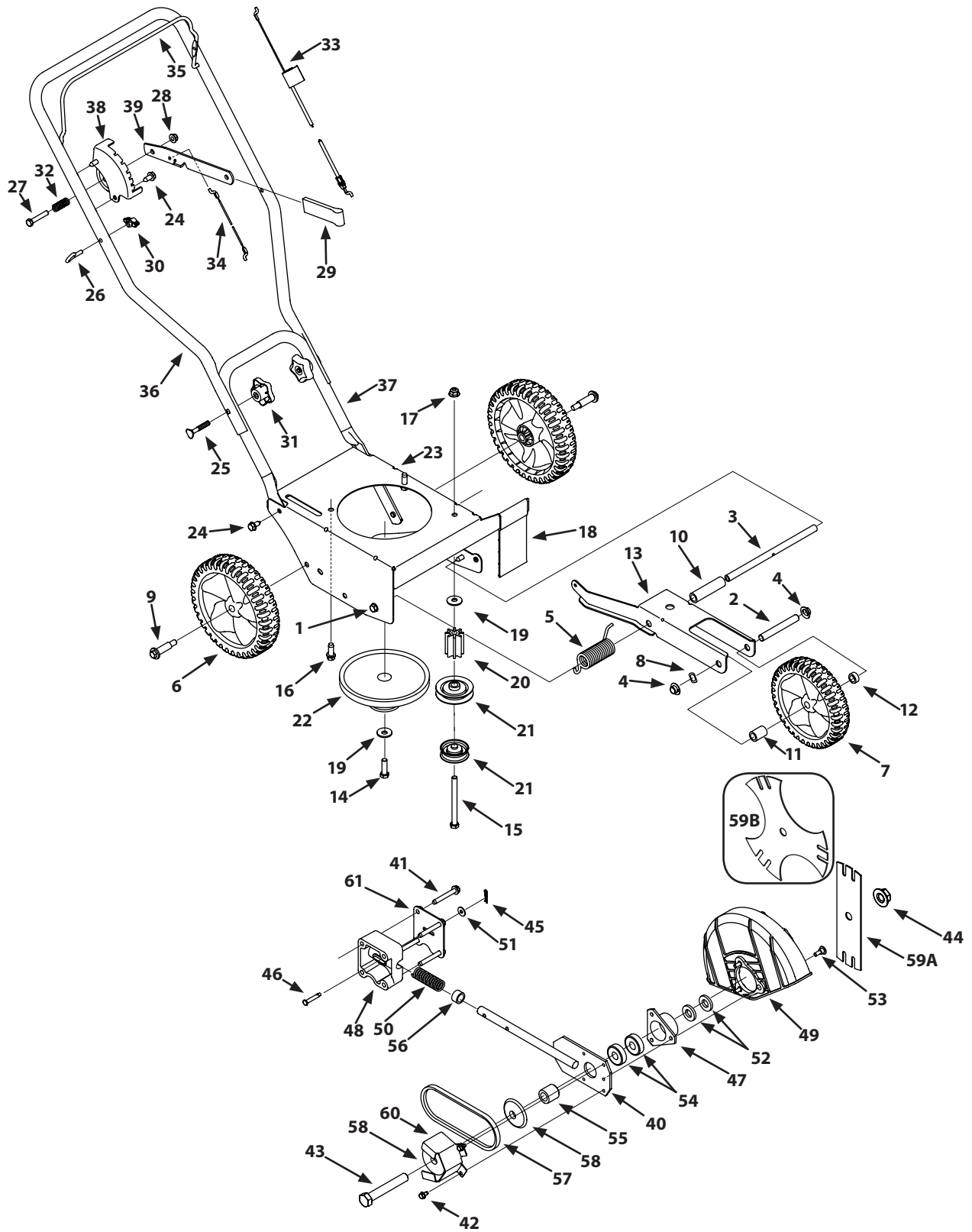
Lawn Edger — 520 Series

WARNING

**READ AND FOLLOW ALL SAFETY RULES AND INSTRUCTIONS IN THIS MANUAL
BEFORE ATTEMPTING TO OPERATE THIS MACHINE.
FAILURE TO COMPLY WITH THESE INSTRUCTIONS MAY RESULT IN PERSONAL INJURY.**

MTD LLC, P.O. BOX 361131 CLEVELAND, OHIO 44136-0019

Handle, Frame & Wheel Assembly



Handle, Frame & Wheel Assembly

Ref.	Part No.	Part Description	Ref.	Part No.	Part Description
1	710-0870	Hex Head Screw 3/8-16	32	932-0369	Compression Spring
2	711-04362	Axle .50 x 3.8	33	746-04035	Control Cable
3	711-04440	Axle .50 x 9.25	34	946-04036	Wheel Adjustment Cable
4	726-0299	Push Cap 1/2" rod	35	747-0976A	Blade Control
5	732-04045	Torsion Spring	36	749-04183-0637	Upper Handle
6	734-1987	Wheel 8x1.8	37	749-04234-0637	Lower Handle
7	734-1988	Wheel 7x1.8	38	781-0741A	Depth Index Bracket
8	936-0232	Wave Washer	39	781-0742	Depth Index Lever
9	738-0929	Shoulder Screw, 3/8-16	40	687-02126	Blade Plate Assembly
10	750-04129	Spacer	41	710-04389	Hex Screw, 5/16-18
11	750-04427	Spacer, .525 x .775 x .1125	42	710-0599	Self-tapping Screw, 1/4-20
12	750-04428	Spacer, .525 x .775 x .3125	43	710-1143A	Hex Screw, 5/8-18
13	787-01240	Wheel Bracket	44	712-0417A	Flange Nut, 5/8-18
14	710-0191	Screw 3/8-24	45	714-0104	Cotter Pin
15	710-0411	Screw 3/8-16	46	711-1017	Clevis Pin
16	710-0654A	Screw, 3/8-16	47	718-04012	Bearing Cup
17	712-04065	Flange Lock Nut, 3/8-16	48	931-04207	Bearing Block
18	731-05063	Debris Guard	49	731-05064	Blade Guard
19	936-0452	Bell Washer, .396 x 1.140	50	932-04169	Compression Spring
20	950-04142	Pulley Mount Spacer	51	736-0342	Flat Washer, .260 x.72
21	756-04148	Flat Idler Pulley, 2.5 OD	52	936-04088	Flat Washer .635x1.24x.181
22	756-1150A	Combination Flywheel Pulley	53	738-0706C	Shoulder Screw
23	787-01304-0637	Frame	54	941-0524	Bearing, .625 ID x 1.57 OD
24	710-0726	Hex Screw, 5/16-12	55	950-04105	Spacer, .63 x 1.12 x 1.06
25	710-1174	Carriage Bolt, 5/16-18	56	750-0547	Spacer, .64 x.88 x .50
26	710-1205	Rope Guide (Eye Bolt)	57	954-04032B	Belt
27	710-3180	Hex Screw, 5/16-18	58	956-0449	Sheave
28	712-04063	Lock Flange Nut, 5/16-18	59A	781-0080-0637	Edger Blade
29	720-0142	Grip	59b	781-0748-0637	Tri-Star Blade
30	720-0279	Wing Nut	60	781-0427-0637	Belt Guard
31	720-04072	Hand Knob	61	787-01075A-0637	Cover Plate