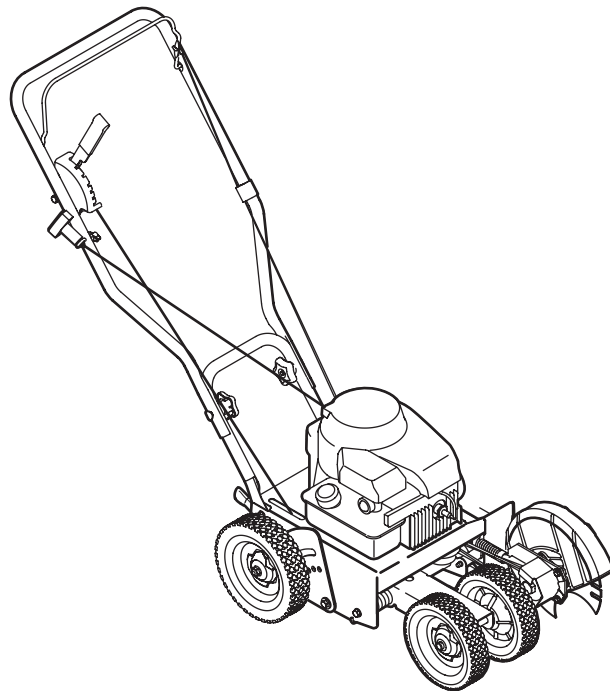




OPERATOR'S MANUAL



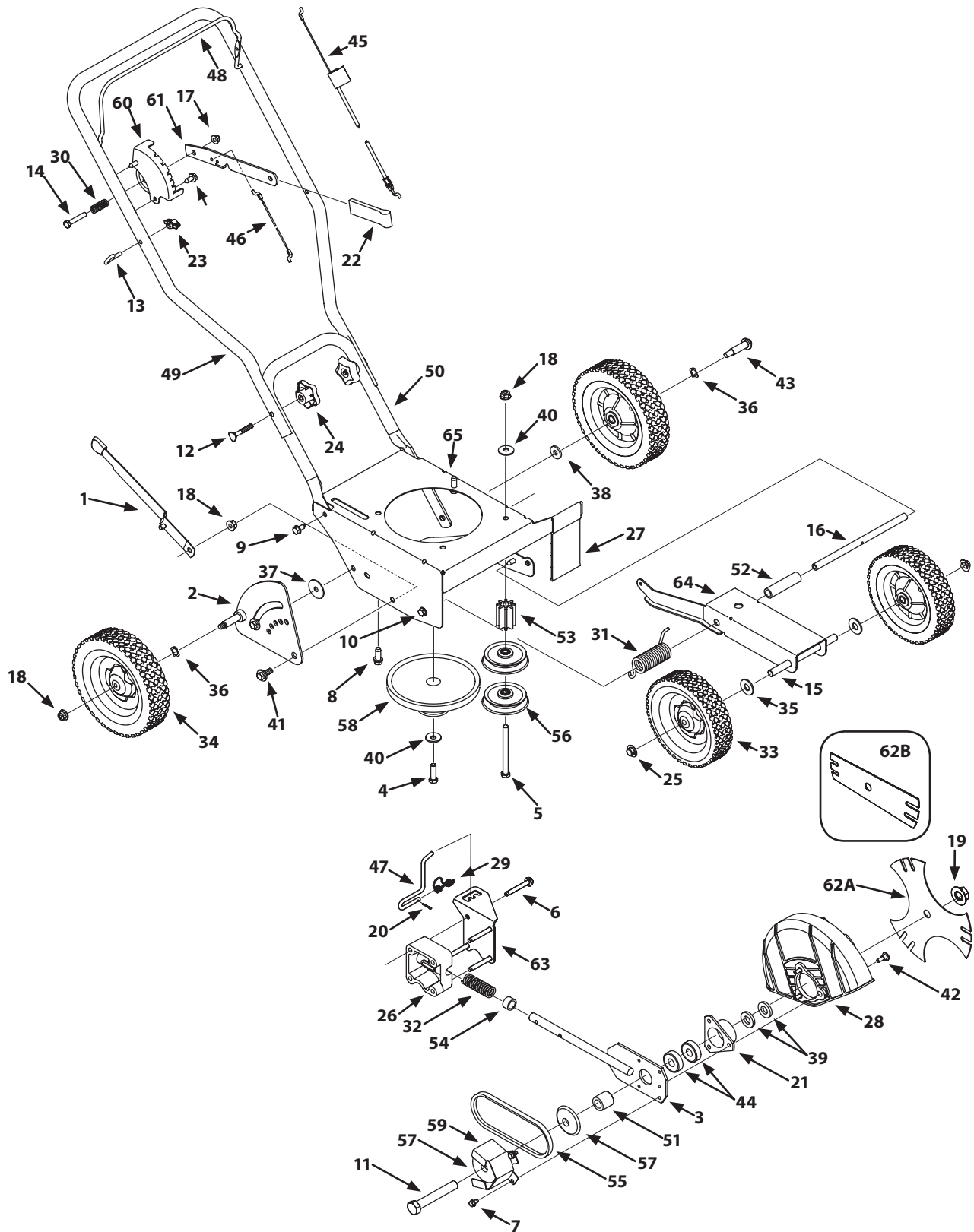
Lawn Edger — Model 554

⚠ WARNING

**READ AND FOLLOW ALL SAFETY RULES AND INSTRUCTIONS IN THIS MANUAL
BEFORE ATTEMPTING TO OPERATE THIS MACHINE.
FAILURE TO COMPLY WITH THESE INSTRUCTIONS MAY RESULT IN PERSONAL INJURY.**

TROY-BILT LLC, P.O. BOX 361131 CLEVELAND, OHIO 44136-0019

Handle, Frame & Wheel Assembly



Handle, Frame & Wheel Assembly

Ref.	Part No.	Description
1	687-02022	Curb Height Adjustment Lever
2	687-02125A	Curb Height Adjuster Plate
3	687-02126	Blade Plate Assembly
4	710-0191	Screw 3/8-24
5	710-0411	Screw 3/8-16
6	710-04389	Hex Screw, 5/16-18
7	710-0599	Self-tapping Screw, 1/4-20
8	710-0654A	Screw, 3/8-16
9	710-0726	Hex Screw, 5/16-12
10	710-0870	Hex Screw 5/16-18
11	710-1143A	Hex Screw, 5/8-18
12	710-1174	Carriage Bolt, 5/16-18
13	710-1205	Rope Guide (Eye Bolt)
14	710-3180	Hex Screw, 5/16-18
15	711-04361	Axle Shaft .50x6.65
16	711-04440	Frame Spacer .50x9.25
17	712-04063	Lock Flange Nut, 5/16-18
18	712-04065	Flange Nut 3/8-16
19	712-0417A	Flange Nut, 5/8-18
20	714-3010	Clevis Pin 3/32 x .625
21	718-04012	Bearing Cup
22	720-0142	Grip
23	720-0279	Wing Nut
24	720-04072A	Star Knob
25	726-0299	Push Cap 1/2" rod
26	931-04207	Bearing Block
27	731-05063	Debris Guard
28	731-05064	Blade Guard
29	732-0188A	Double Torsion Spring
30	932-0369	Compression Spring
31	732-04045	Torsion Spring
32	932-04169	Compression Spring
33	734-1264	Wheel 7 x 1.75 T-Tread

Ref.	Part No.	Description
34	734-1268	Wheel 8 x 1.75 T-Tread
35	936-0179	Flat Washer 1/2 x 1.25 x .10
36	936-0232	Wave Washer .531 x .781 x .013
37	736-0234	Flat Washer, .385 x 1.5 x .075
38	736-0258	Flat Washer .385 x 1.0 x .135 †
39	936-04088	Flat Washer .635x1.24x.181
40	936-0452	Bell Washer,.396 x 1.140
41	738-04149	Shoulder Screw, 3/8-16
42	738-0706C	Shoulder Screw
43	738-0929	Shoulder Screw, 3/8-16
44	941-0524	Bearing, .625 ID x 1.57 OD
45	746-04035	Control Cable (Briggs & Stratton)
46	946-04036	Wheel Adjustment Cable
47	747-04110	Blade Adjustment Rod
48	747-0976A-0637	Bail Handle
49	749-04183-0637	Upper Handle
50	749-04234-0637	Lower Handle
51	950-04105	Spacer, .63 x 1.12 x 1.06
52	750-04129	Spacer
53	950-04142	Pulley Mount Spacer
54	750-0547	Spacer, .64 x .88 x .50
55	954-04032B	Belt
56	756-04148	Flat Idler Pulley, 2.5 OD
57	956-0449	Sheave
58	756-1150A	Combination Flywheel Pulley
59	781-0427-0637	Belt Guard
60	781-0741A	Depth Index Bracket
61	781-0742-0637	Depth Index Lever
62A	781-0748-0637	Tri-Star Blade
62B	781-0080-0637	Edger Blade
63	787-01081A-0638	Bracket Plate
64	787-01239-0638	Dual Wheel Bracket
65	787-01304-0638	Frame