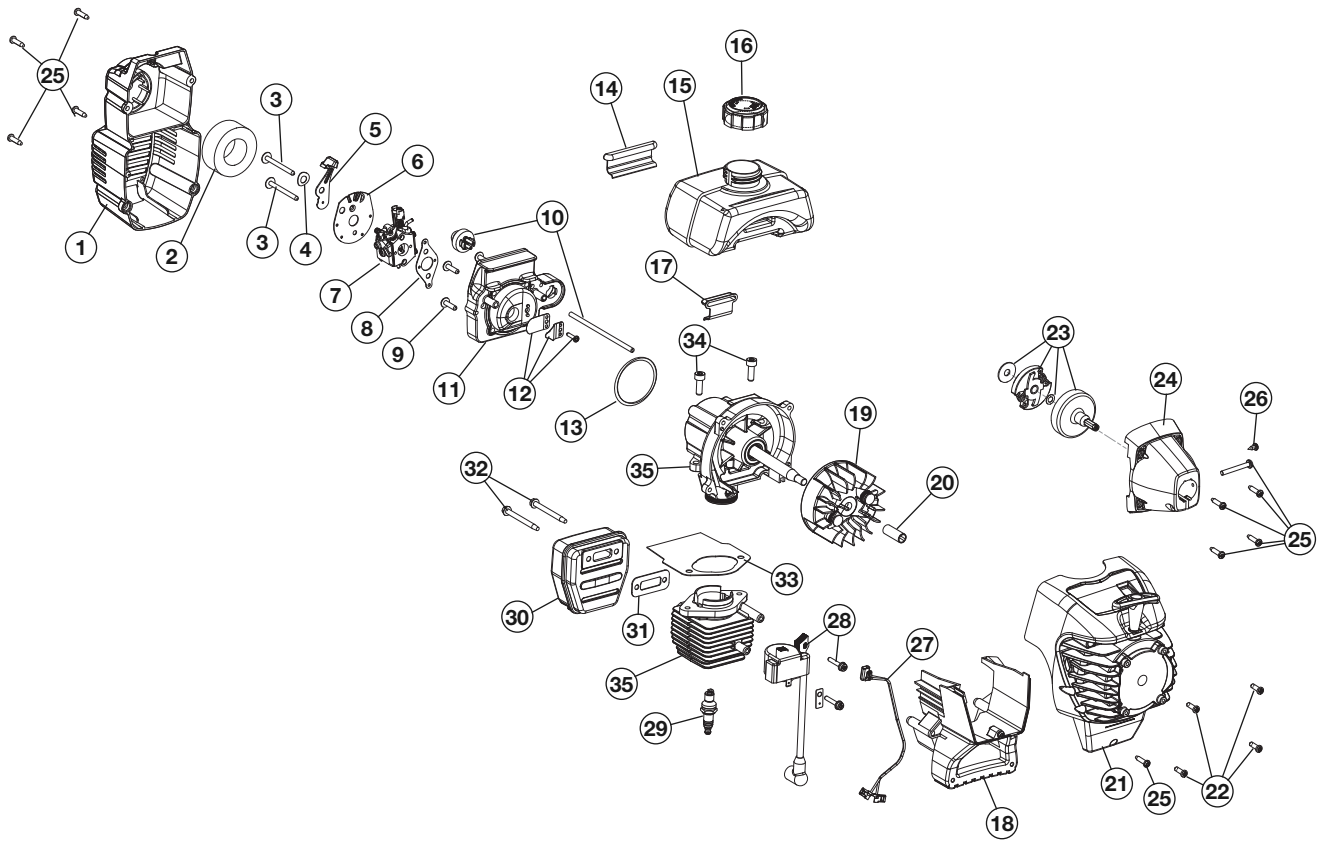
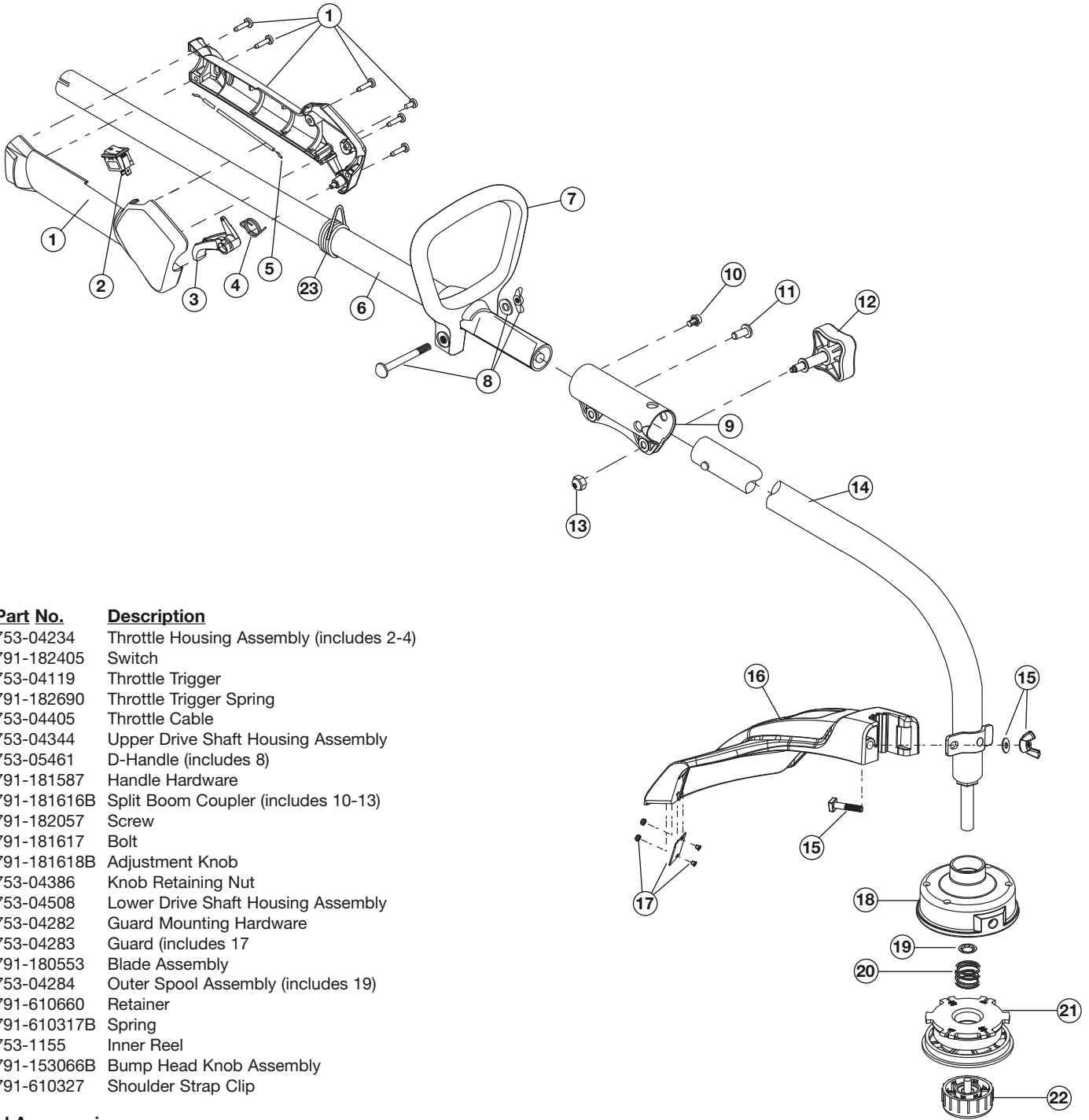


REPLACEMENT PARTS - MODEL YM20CS 2-CYCLE TRIMMER PPN 41BDY20C901



Item	Part No.	Description	Item	Part No.	Description
1	753-04511	Air Cleaner Cover Assembly (includes 2 & 25)	18	753-05091	Shroud Extension & Stand (includes 25)
2	791-180350B	Air Cleaner Filter	19	753-05240	Flywheel Assembly
3	791-180351	Carburetor Mounting Screw Assembly	20	791-181525	Spacer
4	791-180226	Wavey Washer	21	753-06307	Starter Housing Assembly (includes 22 & 25)
5	753-04418	Choke Lever Assembly	22	791-181862	Housing Screw
6	753-04419	Choke Plate Assembly (includes 5)	23	753-05860	Clutch Rotor Assembly
7	753-04333	Carburetor Assembly (includes 8)	24	753-04889	Clutch Cover Assembly (includes 25 & 26)
8	791-610675	Carburetor Gasket	25	791-181345	Cover Screw
9	791-181860	Carb Mount Screw	26	791-182519	Anti-Rotation Screw
10	791-683974B	Primer & Hose Assembly	27	753-05025	Wire Leads and Sleeve
11	753-1196	Carb Mount Assembly (includes 9, 12 & 13)	28	753-04336	Module Assembly
12	791-684451	Reed Assembly	29	791-610311B	Spark Plug
13	753-05487	Carburetor O-Ring	30	753-05169	Muffler Assembly (includes 31 & 32)
14	791-612134	Rear Mounting Pad	31	791-180980	Exhaust Gasket
15	791-182767	Fuel Tank Assembly (includes 16)	32	753-04620	Muffler Mounting Bolts
16	791-182612	Fuel Cap Assembly	33	753-04182	Cylinder Gasket
17	791-145308	Front Mounting Pad	34	791-182723	Cylinder Bolt
			35	753-04812	Short Block Assembly (includes 9, 29, 33 & 34)

REPLACEMENT PARTS - MODEL YM20CS
2-CYCLE GAS TRIMMER
 PPN 41BDY20C901



Item	Part No.	Description
1	753-04234	Throttle Housing Assembly (includes 2-4)
2	791-182405	Switch
3	753-04119	Throttle Trigger
4	791-182690	Throttle Trigger Spring
5	753-04405	Throttle Cable
6	753-04344	Upper Drive Shaft Housing Assembly
7	753-05461	D-Handle (includes 8)
8	791-181587	Handle Hardware
9	791-181616B	Split Boom Coupler (includes 10-13)
10	791-182057	Screw
11	791-181617	Bolt
12	791-181618B	Adjustment Knob
13	753-04386	Knob Retaining Nut
14	753-04508	Lower Drive Shaft Housing Assembly
15	753-04282	Guard Mounting Hardware
16	753-04283	Guard (includes 17)
17	791-180553	Blade Assembly
18	753-04284	Outer Spool Assembly (includes 19)
19	791-610660	Retainer
20	791-610317B	Spring
21	753-1155	Inner Reel
22	791-153066B	Bump Head Knob Assembly
23	791-610327	Shoulder Strap Clip

Optional Accessories

- * 753-1223 Reel and Line Assembly
- * 791-682075B Shoulder Strap

* Items Not Shown