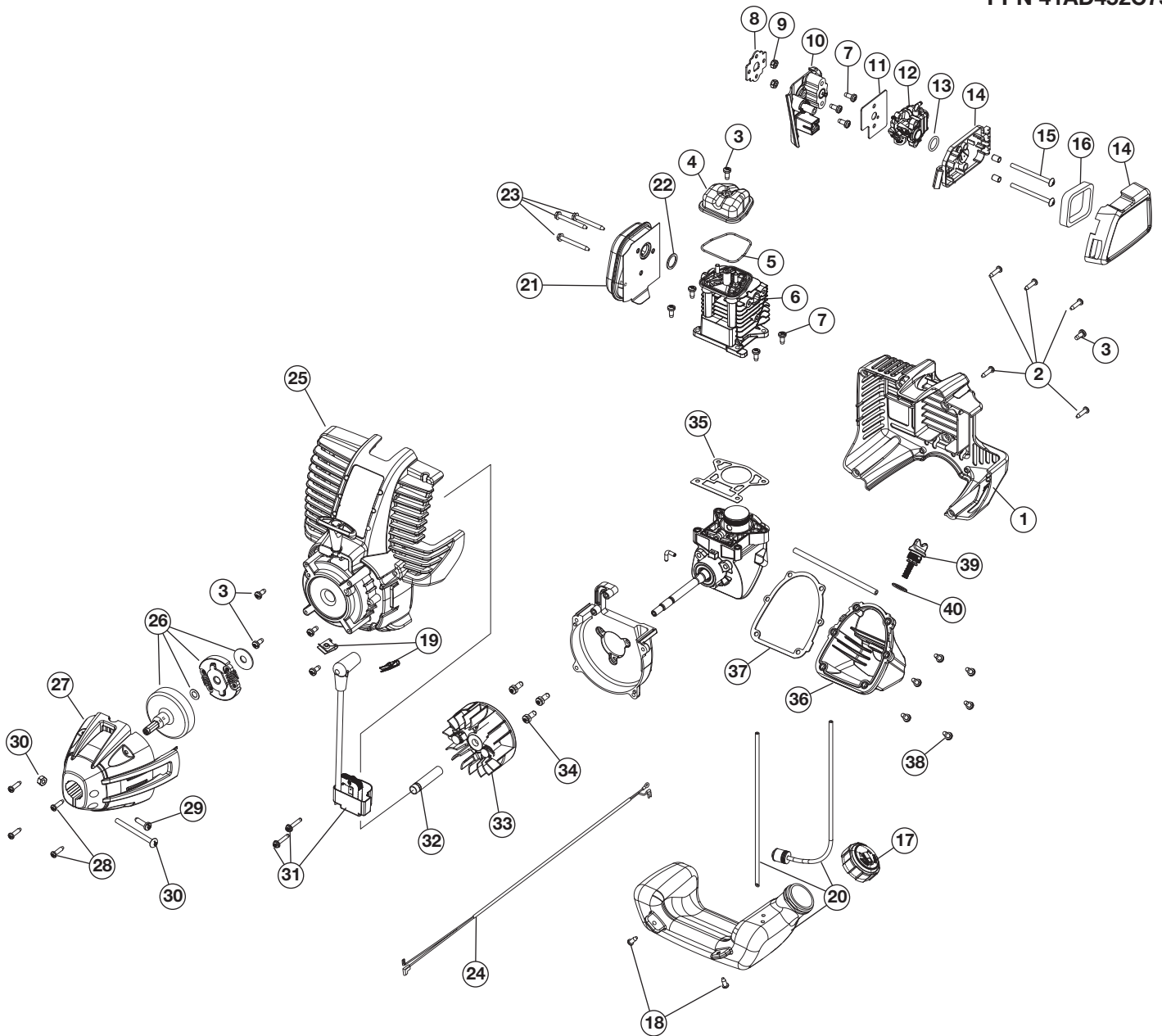


REPLACEMENT PARTS - MODEL YM4520 4-CYCLE GAS TRIMMER

PPN 41AD452C755

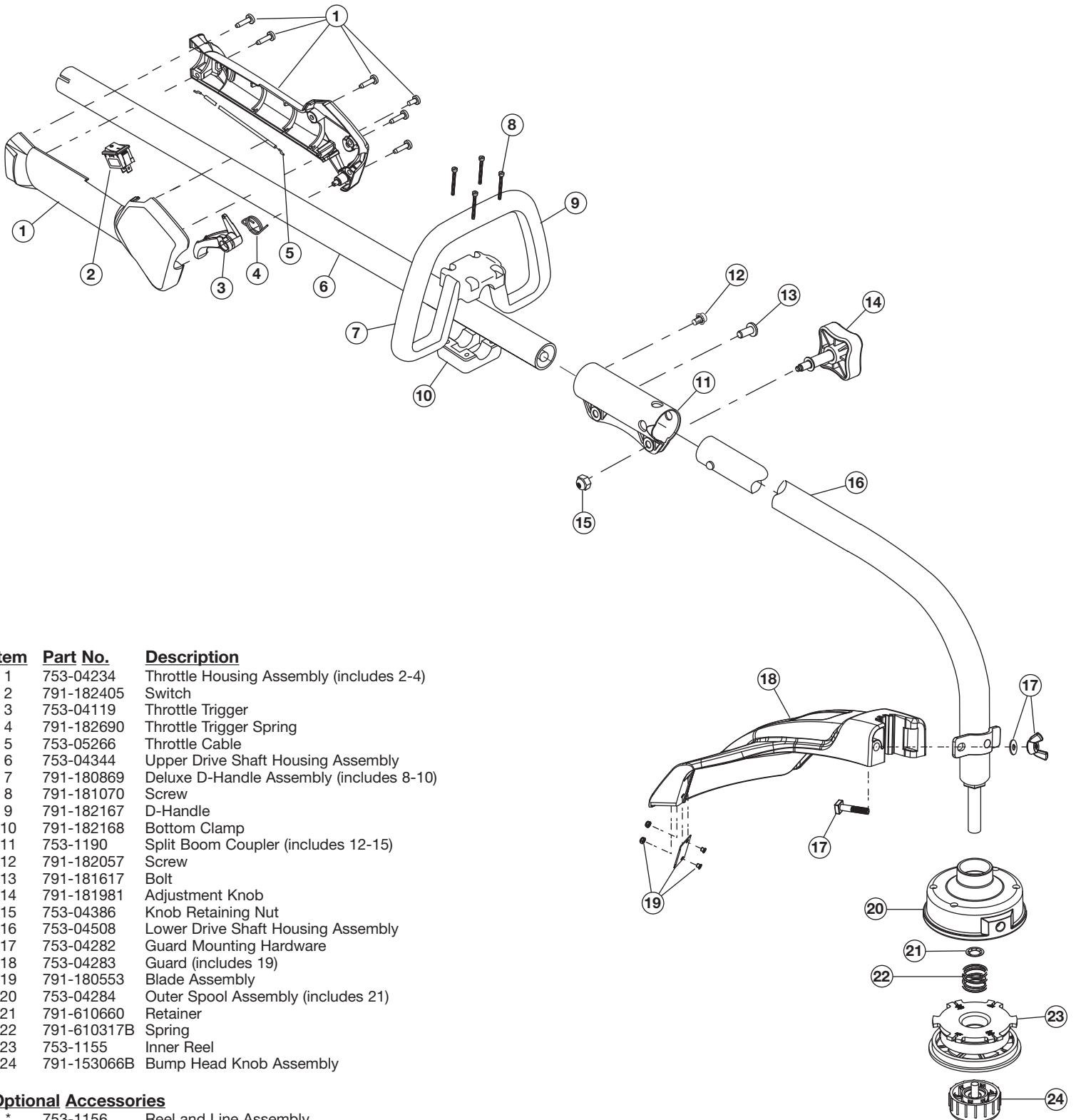


| Item | Part No. | Description |
|------|-------------|--|
| 1 | 753-05449 | Engine Cover |
| 2 | 791-181345 | Screw |
| 3 | 753-05377 | Screw |
| 4 | 753-05209 | Valve Cover |
| 5 | 753-05210 | Valve Cover Gasket |
| 6 | 753-05438 | Cylinder Assembly (includes 5, 7 & 35) |
| 7 | 791-181003 | Cylinder Screw |
| 8 | 753-05247 | Insulator Gasket |
| 9 | 753-05248 | Nut |
| 10 | 753-05452 | Insulator (includes 11) |
| 11 | 753-05439 | Carburetor Gasket |
| 12 | 753-05440 | Carburetor w/Primer |
| 13 | 791-181751 | Carburetor O-Ring |
| 14 | 753-05441 | Air Filter Cover Assembly (includes 15 & 16) |
| 15 | 753-05253 | Air Filter Mounting Screw |
| 16 | 753-05442 | Air Filter |
| 17 | 753-05289 | Fuel Cap |
| 18 | 791-181930 | Screw |
| 19 | 791-182366 | Clip Nut |
| 20 | 753-05443 | Fuel Tank Assembly (includes 17) |
| 21 | 753-05444 | Muffler Assembly (includes 22 & 23) |
| 22 | 753-05244 | Muffler Gasket |
| 23 | 753-05246 | Muffler Mounting Screw |
| 24 | 753-05264 | Lead Wire |
| 25 | 753-06326 | Starter Housing Assembly (includes 3) |
| 26 | 753-06281 | Clutch Assembly |
| 27 | 753-05446 | Clutch Cover Assembly (includes 28-30) |
| 28 | 791-181345 | Cover Screw |
| 29 | 791-182519 | Anti-Rotation Screw |
| 30 | 753-04291 | Clamping Screw Assembly |
| 31 | 753-05447 | Module Assembly |
| 32 | 753-05078 | Spacer |
| 33 | 753-05240 | Flywheel |
| 34 | 791-181861 | Shroud Screw |
| 35 | 791-182374 | Cylinder Gasket |
| 36 | 791-182377 | Oil Pan (includes 37 & 38) |
| 37 | 791-181018 | Oil Pan Gasket |
| 38 | 791-181020 | Oil Pan Screw |
| 39 | 791-182378 | Dipstick Assembly (includes 40) |
| 40 | 791-182290 | O-Ring |
| * | 791-180852B | Spark Plug |
| * | 753-05450 | Shortblock Assembly (includes 3-7 & 31-48) |

REPLACEMENT PARTS - MODEL YM4520

4-CYCLE GAS TRIMMER

PPN 41AD452C755



| Item | Part No. | Description |
|------|-------------|--|
| 1 | 753-04234 | Throttle Housing Assembly (includes 2-4) |
| 2 | 791-182405 | Switch |
| 3 | 753-04119 | Throttle Trigger |
| 4 | 791-182690 | Throttle Trigger Spring |
| 5 | 753-05266 | Throttle Cable |
| 6 | 753-04344 | Upper Drive Shaft Housing Assembly |
| 7 | 791-180869 | Deluxe D-Handle Assembly (includes 8-10) |
| 8 | 791-181070 | Screw |
| 9 | 791-182167 | D-Handle |
| 10 | 791-182168 | Bottom Clamp |
| 11 | 753-1190 | Split Boom Coupler (includes 12-15) |
| 12 | 791-182057 | Screw |
| 13 | 791-181617 | Bolt |
| 14 | 791-181981 | Adjustment Knob |
| 15 | 753-04386 | Knob Retaining Nut |
| 16 | 753-04508 | Lower Drive Shaft Housing Assembly |
| 17 | 753-04282 | Guard Mounting Hardware |
| 18 | 753-04283 | Guard (includes 19) |
| 19 | 791-180553 | Blade Assembly |
| 20 | 753-04284 | Outer Spool Assembly (includes 21) |
| 21 | 791-610660 | Retainer |
| 22 | 791-610317B | Spring |
| 23 | 753-1155 | Inner Reel |
| 24 | 791-153066B | Bump Head Knob Assembly |

Optional Accessories

- * 753-1156 Reel and Line Assembly
- * 753-05778 Fixed Line Insert
- * 791-180120 0.095 Replacement Line

* Items Not Shown