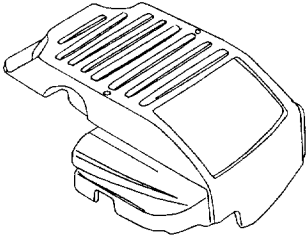
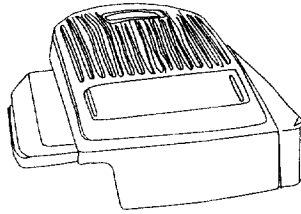


Shroud Chart



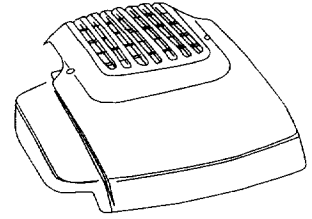
Part No.	Color
751B281439	Dark Red
751B281440	Black
751B281443	Bright Red

Hardware: 710-1256 (Screw)



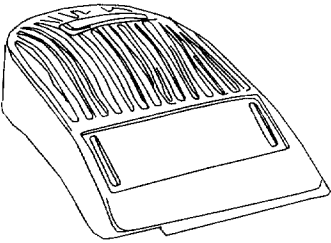
Part No.	Color
731-1395A	Red
731-1396A	Black
731-1397A	Gray

Hardware: 710-1256 (Screw)



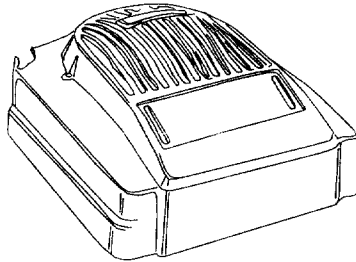
Part No.	Color
731-1402A	Yellow
731-1694	Black
731-1695	Silver
731-1934	Charcoal

Hardware: 710-1256 (Screw)



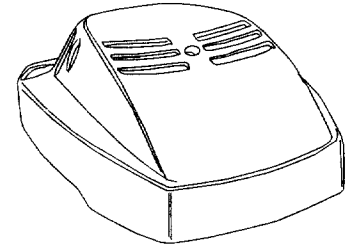
Part No.	Color
731-1585B	Black

Hardware: 710-1274 (Screw)



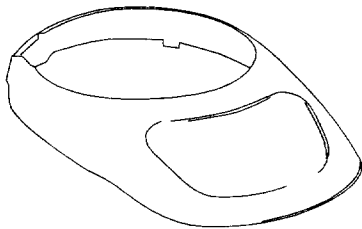
Part No.	Color
731-1586B	Black
731-1612A	Red

Hardware: 7510042823 (Screw)

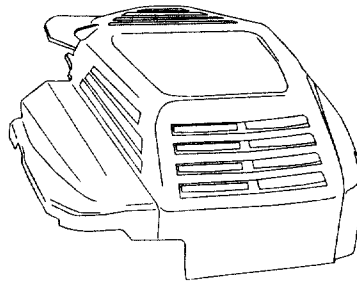


Part No.	Color
7510143208	Black

Hardware: 7510042823 (Screw)

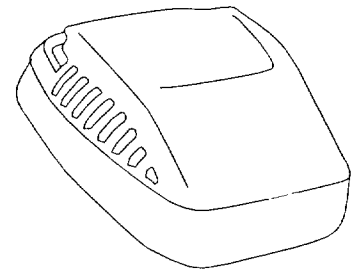


Part No.	Color
7511681311	Black
7511681911	Red
7511682011	Gray



Part No.	Color
751B281451	Gray

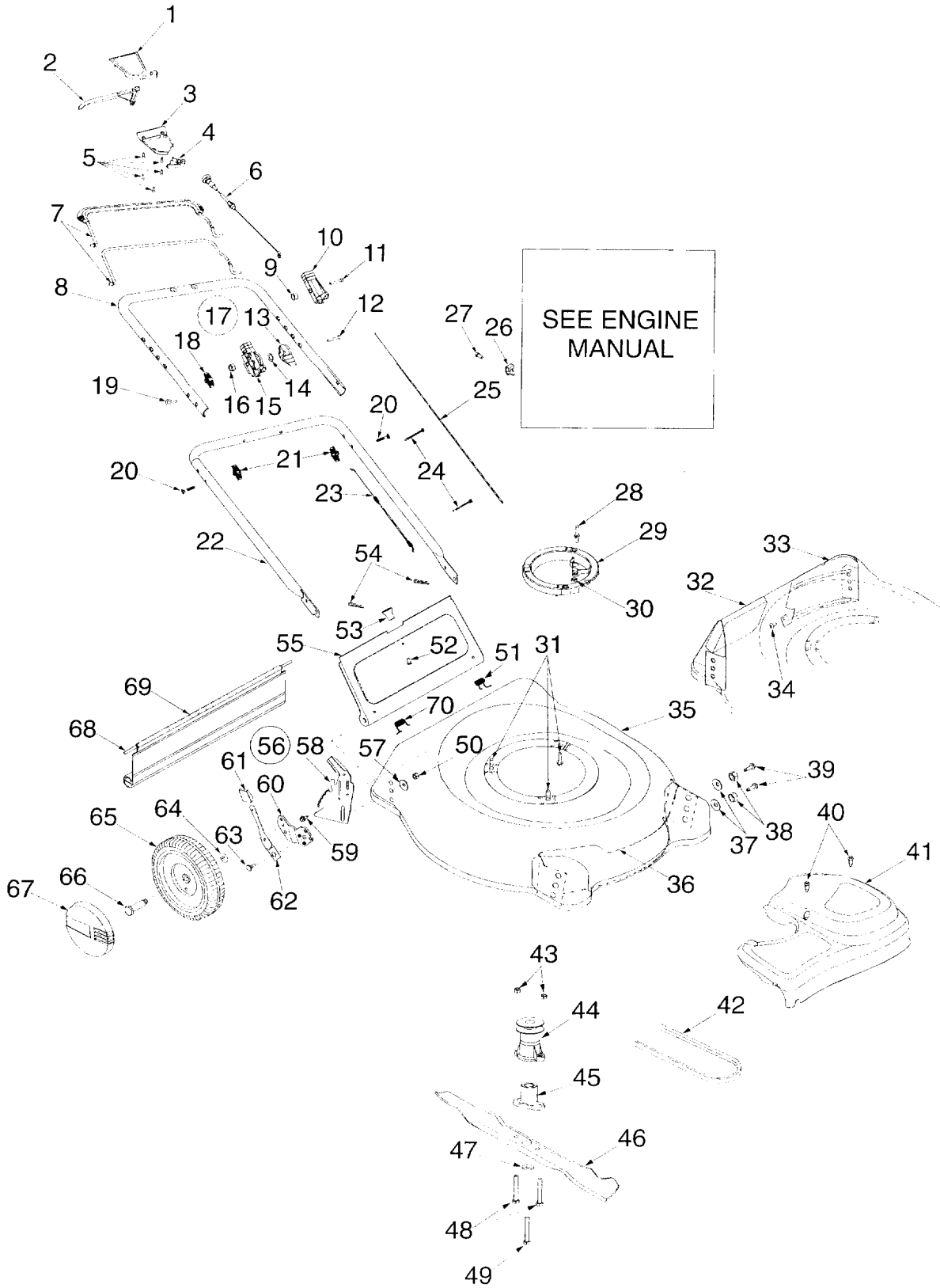
Hardware: 710-1256 (Screw)



Part No.	Color
751B281476	Black
751B281777	Yellow

Hardware: 710-1237 (Screw)

Models 440-E459

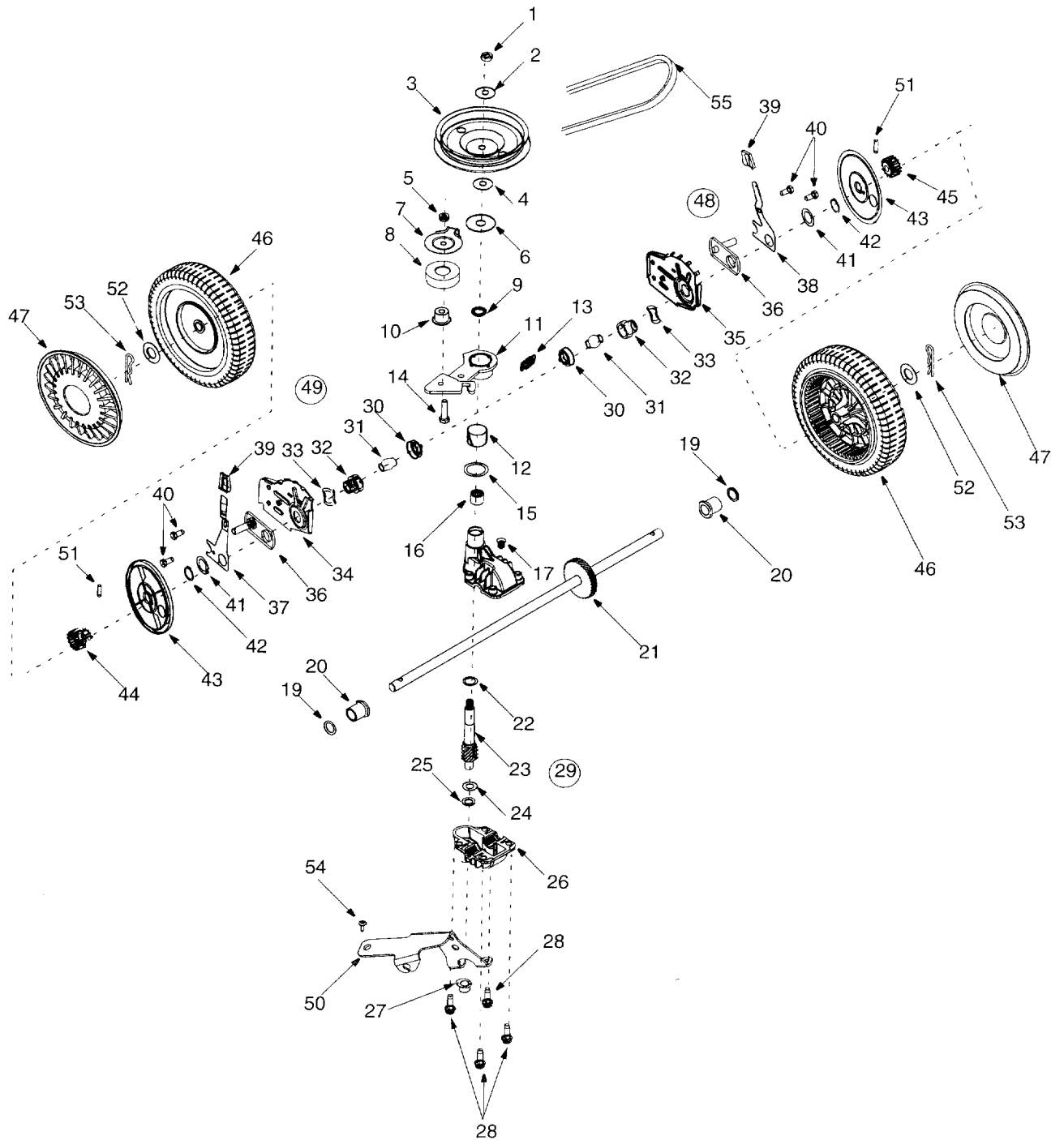


Models 440-E459

Ref. No	Part No.	Description	Ref. No	Part No.	Description
1	731-1057	Upper Drive Cover	37	712-0798	Hex Nut 3/8-16
2	731-0620	Drive Lever	38	736-0331	Bell Washer .39 x 1.13 x .062
3	731-1058	Lower Drive Cover	39	710-0216	Hex Screw 3/8-16 x .75
4	731-1059	Mounting Cap	40	7510042824	Screw #12 x .457
5	710-1667	Screw #10-12:75	41	731-1936A	Trans Cover - Black
6	746-0960	Drive Cable		731-1937A	Trans Cover - Yellow
7	747-0824	Control Lever	42	754-0465	V-Belt
	647-0004	Deluxe Control Lever	43	712-0324	Hex Lock Nut 1/4-20
8	749-0539C	Upper Handle	44	756-1146A	Drive Pulley
9	712-0324	Hex Lock Nut 1/4-20	45	748-0411	Blade Adapter
10	746-0883	Throttle Hsg. w/o Lever	46	742-0741	21" Mulching Blade w/star
11	710-1270	Scr. Oval C-Sunk 1/4-20 x 1.31		742-0641	21" Standard Blade
12	710-0605	Scr. Oval C-Sunk 1/4-20 x 1.81 †	47	736-0452	Bell Washer .396 I.D. x 1.140 O.D. x
13	746-0876	Throttle Lever †	48	710-0606	Hex Screw 1/4-20 x 1.50
14	736-0501	Curved Washer .663 x .980 x .014 †	49	710-1257	Hex Screw 3/8-24 x 2.50
15	746-0875	Throttle Housing †	50	712-3005	Hex Nut 3/8-16
16	712-0324	Hex Lock Nut 1/4-20 Thd.	51	732-0677	Torsion Spring L.H.
17	811-00185	Throttle Body Comp. †	52	710-0192	Scr. Tr. Mach #10-24 x .380
18	720-0279	Knob	53	720-0275	Knob
19	710-1205	Eye Bolt 1/4-20	54	714-0104	Cotter Pin
20	710-1174	Carriage Bolt 5/16-18 x 2.0	55	782-7000	RD Door
21	720-0276	Knob	56	682-0515	Complete Handle Brkt Ass'y - LH
22	749-0928	Lower Handle		682-0516	Complete Handle Brkt Ass'y - RH
23	746-0843	Throttle Cable: 55" (B&S) †	57	736-0356	Bell Washer .39 ID x 1.38 OD
	746-0847	Throttle Cable: 42" (Tec) †	58	682-0513	Handle Brkt Ass'y - LH
24	726-0240	Tie Cable		682-0514	Handle Brkt Ass'y - RH
25	746-0553	Control Cable 39" (B&S)	59	710-0896	Hex Screw w/wsh. 1/4-14 x .62
	746-0737	Control Cable 51" (Tec)	60	14766	Pivot Bar - LH
26	751B213146	Cable Clamp (B&S) †		14765	Pivot Bar - RH
	7510007775	Cable Clamp (Tec) †	61	720-0190	Knob
27	710-1237	Hex Screw: T: #10-32 (B&S) †	62	732-0417A	Spring Lever
	710-0871	Hex Screw: #10-32 (Tec) †	63	738-0507B	Shldr Screw .500 Dia x .434 Long
28	711-1293	Pin-Belt Keeper	64	736-0105	Bell Washer .380 x .880 x .062
29	631-0075A	Engine Spacer	65	634-0020	Wheel 8 x1.75 Disk Bar Grey
30	712-0271	Hex Nut 1/4-20 Thread	66	738-0102	Shldr Screw .498 x 1.445
31	710-1008	Tapp Screw w/Hex Lock Wash	67	720-0249	Hubcap: Euro Grey
32	782-5004	Rear Baffle Right		731-0982A	Hubcap: Radial Spoke Beige
33	782-5003	Rear Baffle Left		731-0981A	Hubcap: Radial Spoke Grey
34	710-1017	Scr. AB: 1/4-14 .625 Trust	68	732-0700	Wire
35	782-0080A	Deck 21" RD	69	731-1236	Rear Flap
36	782-5002	Front Baffle	70	732-0678	Torsion Spring R.H.

† Optional

Models 440-E459



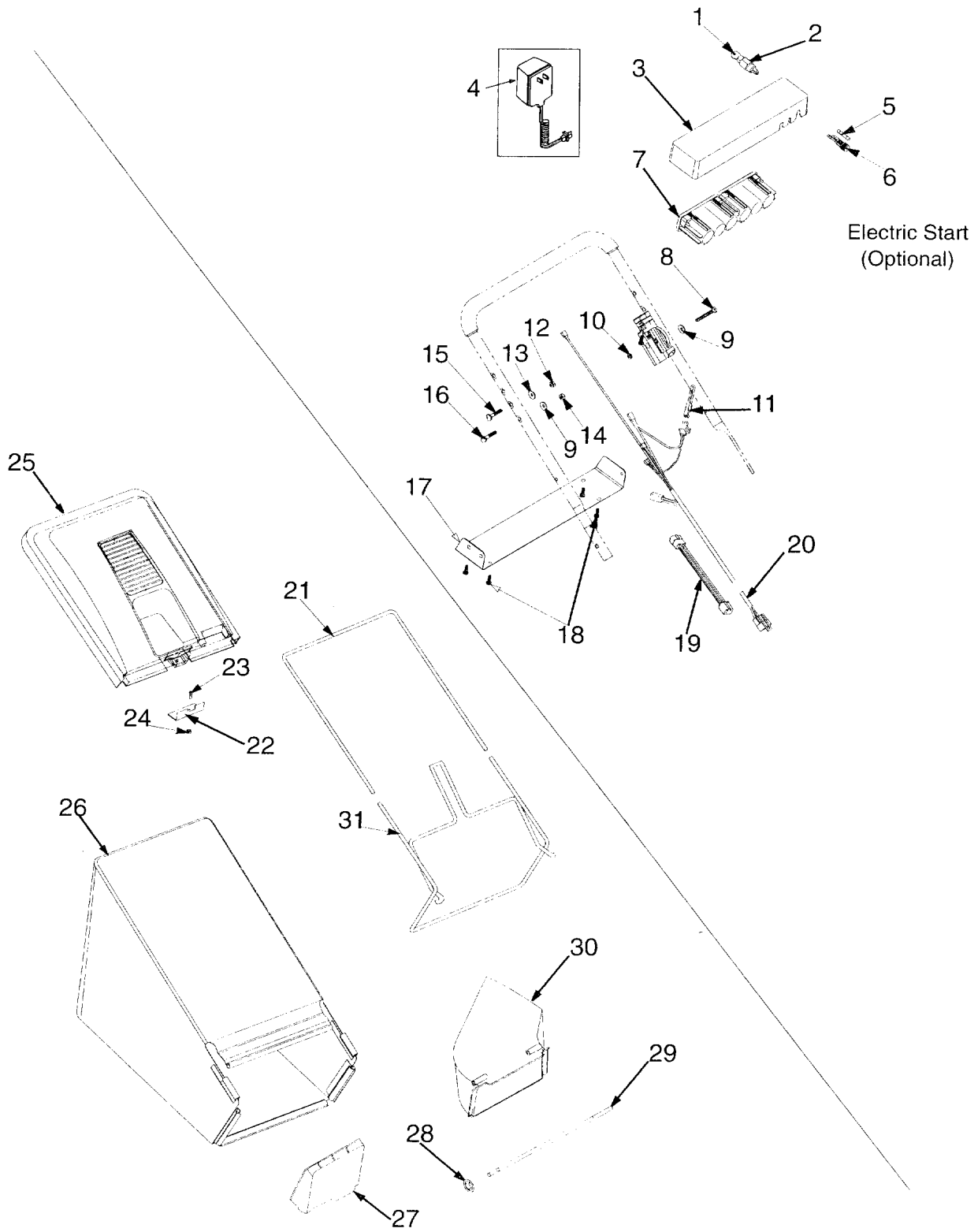
Models 440-E459

Ref. No	Part No.	Description	Ref. No	Part No.	Description
1.	712-3025	Hex Jam Nut 5/16-24	29.	618-0298A	Transmission Assembly (Includes Ref. #1 to Ref. #30)
2.	736-0425	Bell Washer .325 x .930 x .045	30.	732-0708	Bearing Retainer
3.	756-1042	Pulley, 3.82 x .313 x .68	31.	741-0604	Bearing Sleeve .50 I.D.
4.	736-0425	Bell Washer .325 x .930 x .045	32.	748-0355	Bearing Support
5.	712-0896	Lock Nut 1/4-28	33.	736-0447	Wave Washer 1.5 x 1.0 x .029
6.	736-0406	Flat Washer .442 x 1.38 x .060	34.	782-0512B	RH Height Adj. Plate
7.	782-7598	Belt Keeper	35.	782-0511A	LH Height Adj. Plate
8.	741-0124	Ball Bearing	36.	682-0509	Pivot Plate Assembly
9.	721-0457	Oil Seal	37.	732-0706	RH Front Lever
10.	750-1050	Flange Spacer	38.	732-0707	LH Front Lever
11.	682-0028	Idler Bracket Assembly	39.	720-0190	Knob
12.	741-0682A	Bearing Sleeve	40.	710-0216	Hex Cap Screw 3/8-16 x .75
13.	732-0849A	Flat Washer .504 x .700 x .030	41.	736-0474	Washer DD 1.5" O.D.
14.	710-0299	Hex Cap Screw 1/4-28 x 1.00	42.	716-0102	Snap Ring 1.0 dia.
15.	736-0570	Flat Washer .865 x 1.145 x .030	43.	782-7551	Wheel Dust Cap
16.	741-0699	Needle Bearing .438 x .625 x .500	44.	717-1534	Gear 14T RH FWD
17.	721-0325	Plug 1/4 x .437	45.	717-1533	Gear 14T LH FWD
18.	618-0300A	Upper Housing	46.	734-1983	Wheel, 8x2 Black (Link Trd.)
19.	721-0329	Oil Seal .500 x .687 x .094	47.	731-0981A	Hubcap: Gray
20.	741-0673	Flange Bearing	48.	682-0512A	RH Height Adj. Complete
21.	611-0105	Output Shaft	49.	682-0511A	LH Height Adj. Complete
22.	736-0520	Flat Washer .504 x .700 x .030	50.	682-0030	Cable Idler Bracket
23.	717-1492	Pinion Shaft 10T	51.	715-0221	Dowel Pin
24.	736-0314	Thrust Washer .375 x .70 x .030	52.	736-3013	Flat Washer 1/2 x 1.00 x .063
25.	736-0569	Thrust Washer .388 x .625 x .062	53.	714-0101	Cotter Pin .08 x 1.42
26.	618-0299A	Lower Housing	54.	738-1002	Screw
27.	741-0672	Flange Bearing .378 x .531 x .370	55.	754-0465	Belt
28.	710-1276	Hex Screw w/Washer 1/4-20 x .750			

IMPORTANT: For a proper working machine, use factory approved parts.

V-Belts are specially designed to engage and disengage safely. A substitute (non OEM) V-belt can be dangerous by not disengaging completely.

Models 440-E459



Models 440 thru E459

REF. NO.	PART NO.	DESCRIPTION	REF. NO.	PART NO.	DESCRIPTION
1	725-0201	Ignition Key	18	710-0969	Tapp Screw
2	725-0873	Key Switch	19	725-1538	Harness Extension
3	731-0891A	Battery Tray	20	625-0022	Harness
4	725-0727	Battery Charger	21	764-0310	Rear Catcher Frame
5	725-0298	Fuse 7.5 Amp	22	782-9011	Mounting Bracket
6	725-1428	Fuse Holder	23	710-0286	Hex Screw 1/4 -20 x .5
7	725-1276	Battery 12V	24	712-0324	Hex Nylon L-Nut 1/4-20
8	710-0501	Hex Screw:1/4-20:2.0	25	731-1322A	Hardtop Cover w/o Logo: Econo: Blk.
9	736-0270	Bell Washer .265 x .75 x .062		731-1876	Hardtop Cover w/Logo: Econo: Blk.
10	712-0329	Special Hex Nut 5/16-18		764-0433	Grassbag for Hardtop Assy
11	725-1206	Plug	26	764-0476A	Grass Bag: Soft Top w/ Logo
12	712-0267	Nut 5/16-18		764-0309	Grass Bag: Econo: Soft Top w/o Logo
13	736-0242	Bell Wash .340 ID x .872 OD	27	782-5007A	Mulcher Plug
14	712-0287	Hex Nut 1/4-20	28	726-0201	Nut: Spd. .3125 ID
15	710-1250	Carriage Bolt 5/16-18 x 1	29	711-0996	Rod
16	710-0111	Carriage Screw	30	731-1405	Side Discharge Adapter
17	782-9012	Lower Battery Tray	31	764-0311	Front Catcher Frame