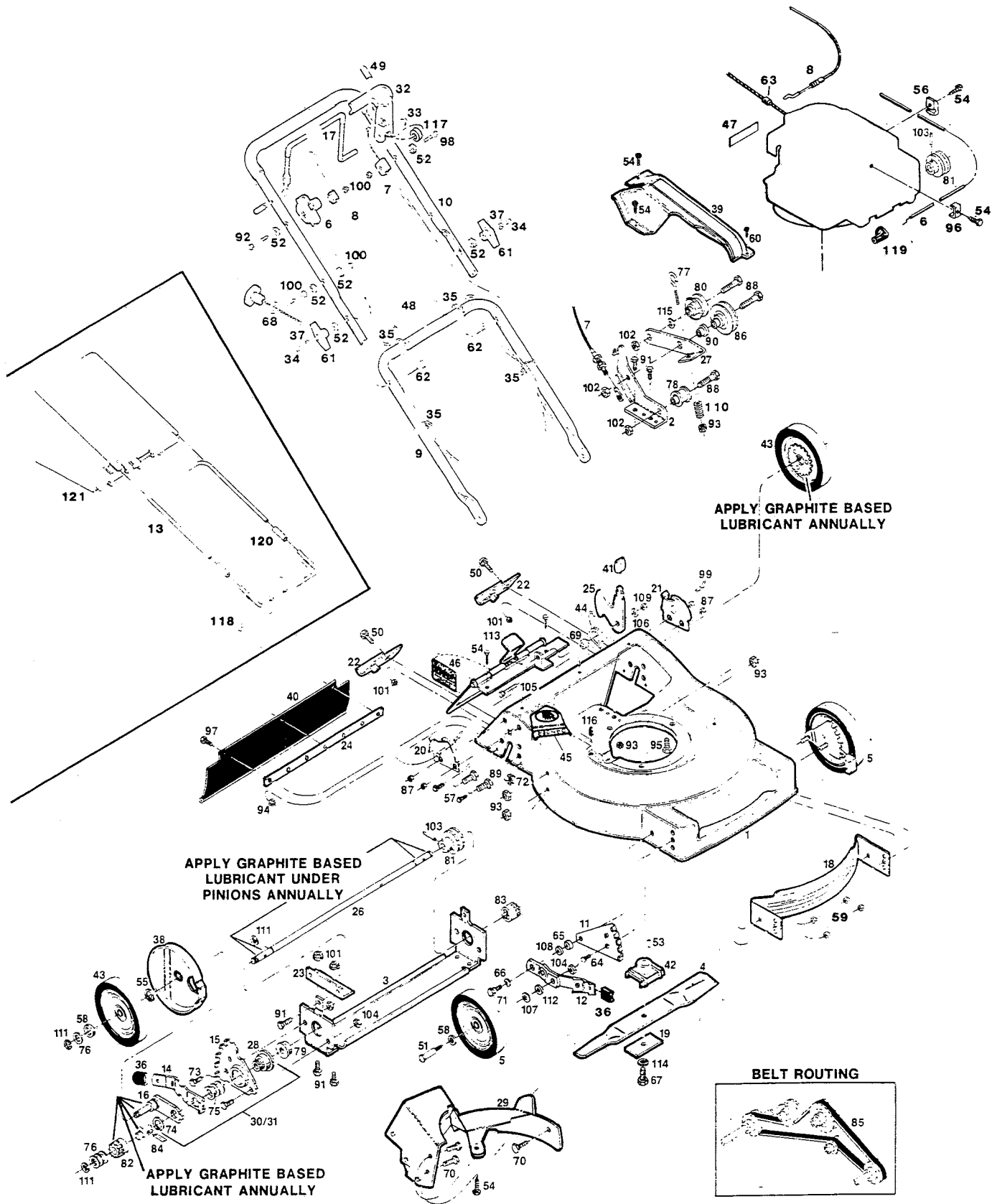


**MODEL 8912K (JCP)  
21" SELF-PROPELLED REAR-BAGGING MOWER**



**MODEL 8912K (JCP)  
21" SELF-PROPELLED REAR-BAGGING MOWER**

Ref. No.	JCPenney Part No.	Supplier Part No.	Description
1	1380-1220	022459	Deck
2	1380-1642	085928	Bracket-idler mount
3	1380-1659	024174	Drive support bracket
4	1277-7975	030338	Blade 21" offset
5	1380-1238	042952	Wheel 8" x 1.75 front
6	1380-1246	052746	Throttle control w/cable
7	1380-1683	052308	Cable-S.P. control
8	1380-1253	052738	Cable-engine/blade control
9	1380-1709	073023	Handle-lower
10	1380-1212	073031	Handle-upper
11	1326-9899	091249	Back plate-front
12	1380-1725	085019	Wheel arm assembly
13	1337-4707	172593	Hoop-catcher
14	1380-1733	097046	Setting lever-rear
15	1380-1741	090761	Back plate-rear
16	1380-1758	090894	Wheel lever-rear RH
	1380-1766	090910	Wheel lever-rear LH
17	1380-1774	073288	Bail-engine/blade control
18	1227-8049	105825	Baffle-front
19	1076-0163	106005	Blade washer
20	1324-4983	097162	Handle bracket-R.H.
21	1324-4991	097170	Handle bracket-L.H.
22	1304-0837	109546	Catcher hook
23	1380-1782	107128	Drive support mtg. brkt.
24	1304-0829	109496	Backing strip
25	1380-1790	022830	Latch-rear bagger
26	1380-1808	108357	Drive shaft
27	1380-1816	107193	Idler arm
28	1380-1824	109082	Stepped sleeve
29	1367-4981	085100	Baffle Assembly
30	1380-1832	128926	Height Adjuster Assembly rear LH
31	1380-1840	128918	Height Adjuster Assembly rear RH
32	1380-1857	114553	Lever-ground drive control
33	1380-1865	380626	Palnut-5/16
34	1367-9774	110064	Plastic-bolt cap
35	1244-0012	110379	Cable tie
36	1304-0878	110510	Plastic tip-height adjuster
37	1317-7167	310045	Nut-5/16 hex
38	1380-1873	112037	Dust cover-wheel
39	1380-1881	113662	Belt cover
40	1277-9898	111633	Vinyl trailing shield
41	1304-0860	111724	Knob-catcher latch
42	1297-5801	126466	Blade adapter
43	1380-1899	042929	Wheel-rear, w/gear
44	1277-8189	133371	Torsion spring-catch latch
45	1324-5006	143115	Decal-Danger
46	1380-1907	795039	Decal-door caution
47	1380-1261	009415	Decal-blade warning
48	1367-9808	715557	Decal-starting instructions
49	1380-1915	794412	Decal-drive control instructions
50	1277-8197	150011	Carriage bolt-1/4-20 x 5/8
51	1277-8205	150730	Wheel bolt-front
52	1072-7089	150201	Curved washer-5/16
53	1066-3706	150276	Woodruff key #6
54	1076-0080	150623	Screw-slotted hex #10 x 5/8
55	1093-1509	790451	Ring-retainer
56	1367-9824	157552	Cable clamp
57	1230-5801	153601	Self tap screw 1/4-20 x 3/4
58	1380-1923	151449	Washer-wheel retaining
59	1380-1428	156406	Nut-3/8-16 Flange Lock
60	1380-1949	151621	Screw-self drilling #6-20 x 1/2

Ref. No.	JCPenney Part No.	Supplier Part No.	Description
61	1373-3993	113589	Wing nut 5/16-18
62	1086-5889	151936	Curved head bolt 5/16-18 x 2.25
63	1308-0981	152074	Rope stop
64	1277-8221	152405	Bolt-carriage 3/8-16 x 3/4
65	1302-2884	156182	Washer-plastic 3/4 x 11/32 x .095
66	1277-8247	152421	Washer-spring
67	1324-5030	157255	Bolt-blade
68	1027-1914	152371	Eyebolt-Rope guide
69	1277-8254	152637	Spacer-bagger latch
70	1302-6794	156851	Bolt-1/4-20 x 3/8 SHVD HD
71	1302-2892	156125	Bolt-shoulder
72	1380-1956	154393	Nut-Snap in 1/4-20
73	1380-1964	153817	Bolt-hex head 3/8-16 x 1/2
74	1380-1972	153841	Snapping 7/8
75	1380-1980	153858	Spring washer 7/8
76	1291-6037	152553	Thrust washer 1/2" I.D.
77	1380-1998	153908	Bolt-Hook
78	1380-1311	170456	Pulley-3/8" bore
79	1380-1329	170464	Bearing-flange ball
80	1317-6284	170530	Pulley-ext hub 3/8" bore
81	1380-1337	171421	Pulley-drive 1/2" bore
82	1380-1345	170993	Pinion-ratchet R.H.
83	1380-1352	170985	Pinion-ratchet L.H.
84	1380-1360	170811	Drive pawl
85	1380-1378	170829	V-belt 3L
86	1380-1386	170878	Idler-pulley
87	1277-8304	310151	Nut-nylon insert-5/16 - 18
88	1317-6789	312322	Bolt-hex hd. 3/8-16 x 1.75
89	1302-1704	450346	Bolt-5/16-18 x 3/4
90	1380-1394	326348	Shouldered spacer
91	1286-1530	449587	Bolt hex hd. 1/4-20 x 5/8
92	1324-5048	153874	Bolt-1/4-20 x 2-1/4
93	1297-0505	451419	Nut-TL flange 1/4-20
94	1324-5204	452318	Nut-hex nylon insert #10-24
95	1297-5793	457168	Bolt-thread form 3/8-16 x 7/8
96	1076-0171	150318	Clamp-Cable
97	1072-7469	458687	Bolt-hex #10-24 x 1/2
98	1093-0956	450379	Bolt-hex 1/4-20 x 1-3/4
99	1066-3375	715011	Hairpin Cotter
100	1066-3607	715037	Nut-keps 1/4-20
101	1302-1951	715078	Nut-flange whiz 1/4-20
102	1277-8320	715086	Locknut-hex-3/8 - 16
103	1093-0410	715193	Roll pin 3/16 x 1
104	1072-5224	715524	Nut-hex 3/8 - 16 Jam
105	1277-8338	715292	Bolt hex head 1/4-20 x 1
106	1367-9287	462093	Washer-flat 1/4"
107	1277-7462	715607	Washer-belleville 3/8
108	1324-5055	156877	Washer-3/8 hardened
109	1066-3565	715508	Nut top lock-1/4 - 20
110	1093-0048	776468	Spring-idler cable
111	1159-7093	789883	E-ring
112	1283-1509	715417	Washer 3/8
113	1337-4715	013706	Door assembly
114	1302-2835	156919	Lockwasher-3/8 hd. split
115	1277-9930	150771	Washer-flat
116	1377-4723	111856	Cap-bolt
117	1380-1410	381053	Washer-plastic
118	1324-5170	096578	Frame-Catcher
119	1277-8114	110833	Boot-spark plug
120	1277-8213	151464	Connector
121	1297-5868	160184	Grassbag
		188292	Owner's Handbook

- This parts list covers several different mower models; not all of the parts listed may be used on the particular model you are working with.
- When servicing use only **Genuine Factory Replacement Parts (OEM)** that are specifically designed for the particular model that you are working with.
- Parts are right or left hand as viewed from the operator's position.
- Model specifications are subject to change without prior notice.
- **Do not operate** the mower unless all parts are attached and in good working order.
- Lawn mower deck and/or other painted parts differing in color may be substituted without notice.