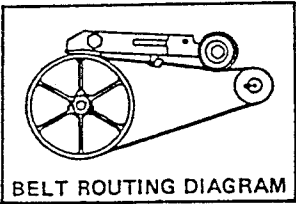
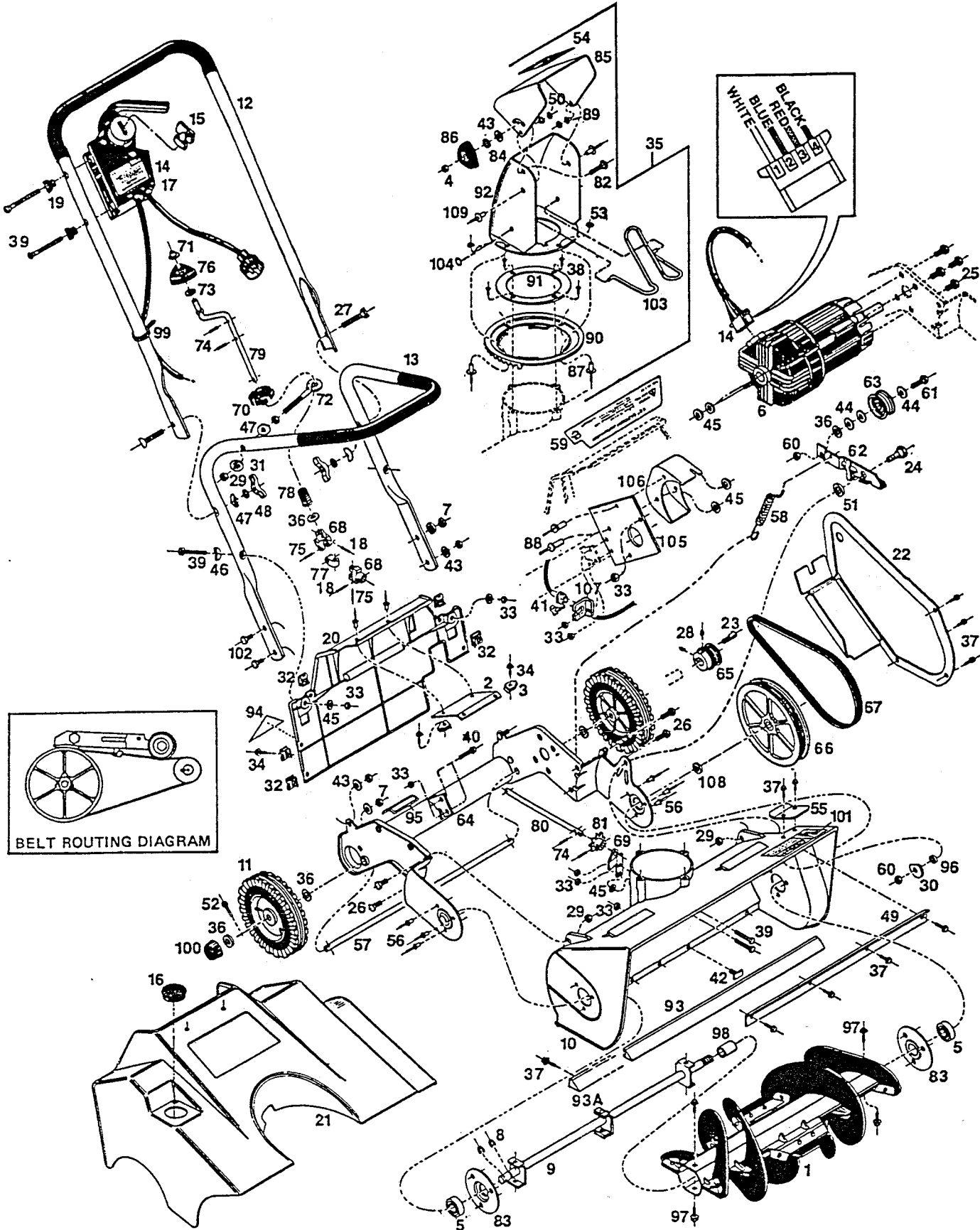


A3222ELE
 CH3222ELE
 SC3222ELE
 22" Electric Snowthrower



**A3222ELE
CH3222ELE
SC3222ELE
22" Electric Snowthrower**

Ref. No.	Part No.	Description	Ref. No.	Part No.	Description
1	712117	Auger Assembly	56	764225	Pop Rivet 3/16 x ¾
2	772749	Support Bracket - Panel	57	662221	Axle
3	452383	Nut - Tinnerman	58	662809	Spring - Idler Arm
4	451179	Nut - 1/4-20 Eslock	59	677997	Decal - Control Panel
5	423756	Bearing	60	715524	Nut - ¾-16 Center Lock Jam
6	610006	Motor Electric	61	715326	Bolt - ¾-16 x 1 Hex
7	715508	Nut - 1/4-20 Top Lock	62	697425	Idler Arm
8	789863	Retaining Ring	63	697144	Idler Pulley
9	662361	Shaft Assembly	64	791624	Frame Assembly
10	672006	Housing Auger	65	707836	Pulley - Engine
11	041129	Wheel - 6" Plastic	66	672543	Pulley - Auger
12	657064	Handle - Upper	67	707117	Belt
13	732230	Handle Lower	68	763383	Clevis - U-Joint
14	630046	Switch - Motor Control	69	772434	Bracket - Chute Adjustment
15	672238	Key - Switch	70	772566	Detent - Chute Adjustment
16	672402	Hole Plug	71	152579	Push Nut - 5/16
17	677377	Decal - Starting Instructions	72	459339	Eyebolt
18	489955	Pin - Roll 5/32 x 5/8	73	715185	Washer - 5/16 Flat
19	111732	Insulator Handle	74	489088	Pin - Roll 5/32 x ¾
20	a. 697169	Panel-Back (Red)	75	489260	Pin - 5/32 x ¾
	b. 672428	Panel-Back (Orange)	76	744292	Knob - 5/16
21	a. 697151	Cover-Motor (Red)	77	751172	Connector - U-Joint
	b. 672436	Cover-Motor (Orange)	78	775676	Spring - Detent
22	414714	Cover Assembly - Belt	79	783944	Crank - Chute Discharge Control Guide
23	154443	Key - 1" Long 3/16" to 1/8"	80	418053	Shaft - Sprocket
24	459891	Bolt - Shoulder 3/8-15 x 1	81	707844	Sprocket - Drive
25	153593	Bolt - 5/16-18 x ½	82	715532	Bolt - ¼-20 x 1½ Carriage
26	450429	Bolt - 5/16-18 x ¾	83	790725	Retainer - Bearing
27	151936	Bolt - 5/16-18 x 2¼ Curved	84	461715	Washer - ¼ Star
28	459776	Set Screw 5/16	85	463968	Deflector - Chute
29	715490	Nut Eslock 5/16-18	86	744326	Knob ¼-20 Female
30	662197	Washer - Back Up	87	764217	Pop Rivet - ¾
31	151795	Wing Nut 5/16-18	88	764233	Pop Rivet - 3/16
32	452375	Nut - Tinnerman	89	764241	Eyelet
33	452318	Nut - 10-24 Hex Nylock	90	416909	Gear - Chute
34	459685	No. 10 x ¾ Special Screw	91	419580	Ring - Chute
35	712497	Chute Assembly	92	672410	Chute
36	462309	Washer - 3/8	93	435370	Bar - Scraper (early 1986 production)
37	459347	Screw - 10-9 x ¾ Hex Washer Head	93A	672550	Bar - Scraper (later 1986 production)
38	459354	Screw - 10-9 x ¾ Flat Head	94	677948	Decal - OPEI B71.3-1985
39	459446	Screw - 10-24 x 1½ Hex Washer Head	95	678029	Decal UL Snow Thrower
40	525337	Screw - 10-24 x ½ Hex	96	468652	Spacer ¾-.385 x .187
41	447771	Strain Relief	97	458539	Screw - No. 10-24 x ¾ Thread Forming
42	459404	Screw - Scraper Bar	98	468660	Spacer - ½ x .065 x 1"
43	460584	Washer - 1/4	99	110379	Cable Tie
44	461731	Washer - 3/8 Flat	100	672345	Hub Cap
45	462424	Washer - No. 10 Flat SAE	101	677682	Decal - Auger Housing
46	461004	Washer - 7/8 Curved	102	715052	Bolt - ¼-20 x ½ Hex Head
47	150201	Washer - 5/16 Curved	103	663674	Guard - Chute
48	461665	Washer - 5/16 Shakeproof	104	715102	Ring - 3/16 Push on
49	463984	Baffle - Auger Housing	105	029942	Bracket - Motor Mounting
50	153734	Washer - Back Up	106	111807	Cover - Motor Plug
51	468645	Spacer - 1 x 505 x .187	107	664144	Bracket
52	715029	Cotter Pin	108	152553	Washer - Hardened
53	462051	Washer - .129 ID	109	154534	Pop Rivet - 3/16 Aluminum
54	677690	Decal - Danger Discharge Chute			
55	447995	Tab			