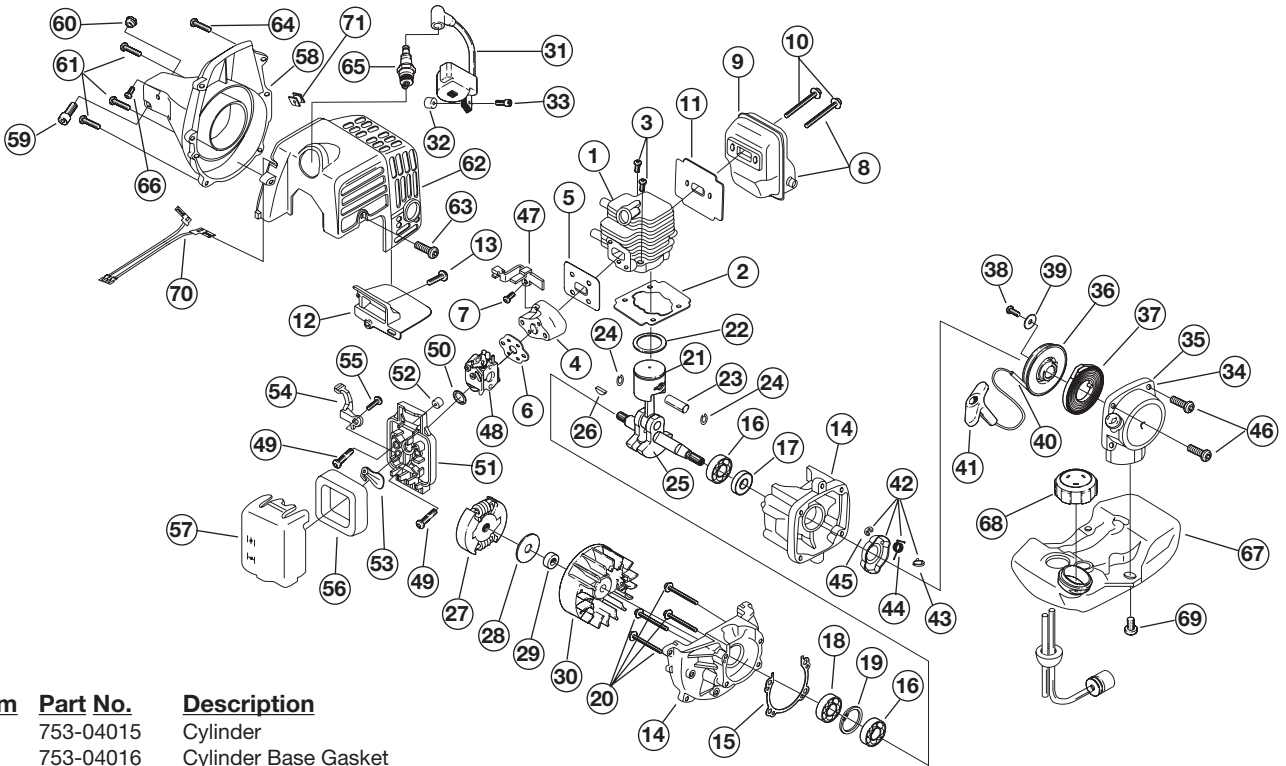


ENGINE PARTS - MODEL CC3075

2-CYCLE GAS TRIMMER

PPN 41ADC75C010



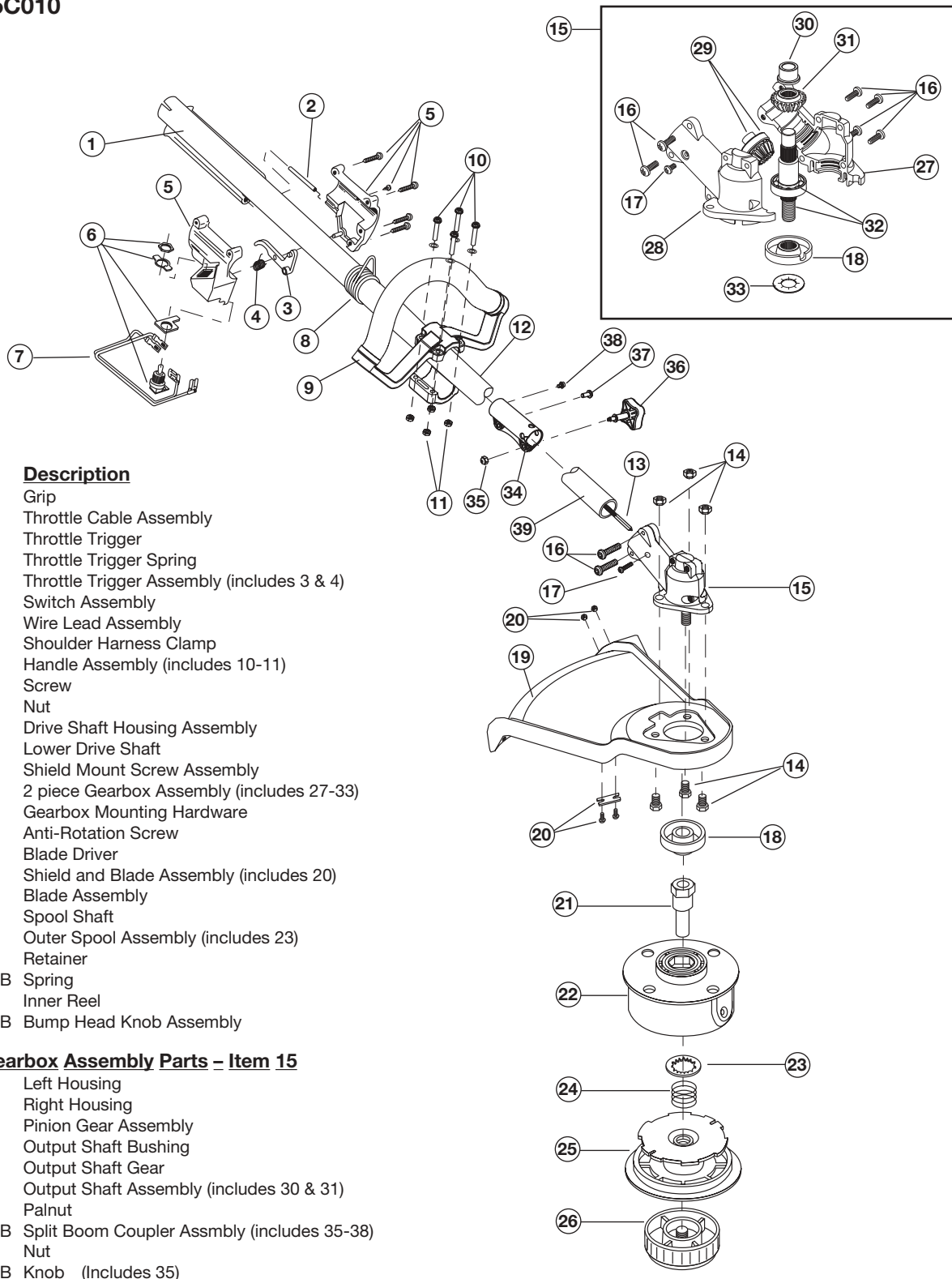
| Item | Part No. | Description |
|------|------------|--|
| 1 | 753-04015 | Cylinder |
| 2 | 753-04016 | Cylinder Base Gasket |
| 3 | 791-181706 | Bolt |
| 4 | 791-181707 | Insulator |
| 5 | 791-181708 | Insulator Gasket |
| 6 | 791-181709 | Carburetor Gasket |
| 7 | 791-181710 | Screw and Washer |
| 8 | 753-1176 | Muffler Assembly (includes 9 & 10) |
| 9 | 753-1177 | Muffler |
| 10 | 791-181713 | Screw |
| 11 | 791-181714 | Muffler Gasket |
| 12 | 791-181715 | Muffler Plate |
| 13 | 791-181716 | Screw |
| 14 | 791-181717 | Crankcase Service Assembly (includes 15-20 & 25) |
| 15 | 791-181718 | Crankcase Gasket |
| 16 | 791-181719 | Bearing |
| 17 | 791-181720 | Oil Seal |
| 18 | 791-181721 | Oil Seal |
| 19 | 791-181722 | Snap Ring |
| 20 | 791-181723 | Screw |
| 21 | 753-04018 | Piston |
| 22 | 791-182014 | Ring |
| 23 | 791-182015 | Piston Pin |
| 24 | 791-181727 | Snap Ring |
| 25 | 753-04019 | Crankshaft |
| 26 | 791-181729 | Key |
| 27 | 791-181730 | Clutch |
| 28 | 791-181074 | Clutch Washer |
| 29 | 791-181731 | Spacer |
| 30 | 791-181732 | Flywheel Assembly |
| 31 | 791-181733 | Module Assembly (includes 32 & 33) |
| 32 | 791-181734 | Spacer |
| 33 | 753-1181 | Screw |
| 34 | 791-181777 | Recoil Assembly (includes 35-41) |
| 35 | 791-181737 | Recoil Case |
| 36 | 791-181738 | Recoil Pulley |
| 37 | 791-181739 | Recoil Spring |
| 38 | 791-181740 | Screw |
| 39 | 791-181741 | Washer |
| 40 | 791-181742 | Rope |

| Item | Part No. | Description |
|------|------------|---------------------------------------|
| 41 | 791-181079 | Pull Handle |
| 42 | 791-182118 | Pulley Assembly (includes 43-45) |
| 43 | 791-181745 | Ratchet |
| 44 | 791-181746 | Spring |
| 45 | 791-181747 | Retaining Ring |
| 46 | 791-181716 | Screw |
| 47 | 791-181748 | Throttle Bracket |
| 48 | 753-04389 | Carburetor (includes Primer Bulb) |
| 49 | 791-181750 | Screw |
| 50 | 791-181751 | O-Ring |
| 51 | 791-181752 | Air Cleaner Assembly (includes 52-57) |
| 52 | 791-181753 | Sleeve |
| 53 | 791-181754 | Choke Plate |
| 54 | 791-181755 | Choke Lever |
| 55 | 791-181756 | Screw |
| 56 | 791-181757 | Air Filter |
| 57 | 791-181758 | Air Cleaner Cover |
| 58 | 753-1178 | Clutch Housing Assembly |
| 59 | 791-181760 | Bolt |
| 60 | 791-181761 | Nut |
| 61 | 791-181762 | Screw |
| 62 | 753-1179 | Engine Cover |
| 63 | 791-181716 | Screw |
| 64 | 791-181762 | Screw |
| 65 | 791-181765 | Spark Plug |
| 66 | 791-182188 | Screw |
| 67 | 791-181766 | Fuel Tank (68-69 includes fuel lines) |
| 68 | 791-182612 | Fuel Cap Assembly |
| 69 | 791-181768 | Screw |
| 70 | 791-181769 | Lead Wire Assembly |
| 71 | 791-182157 | Grommet |
| * | 791-181696 | Spark Arrestor |
| * | 791-181701 | Primer Bulb |
| * | 791-181702 | Carburetor Repair Kit |
| * | 791-181703 | Gasket/Diaphragm Repair Kit |
| * | | not shown |

BOOM AND TRIMMER PARTS - CC3075

2-CYCLE GAS TRIMMER

PPN 41ADC75C010



| Item | Part No. | Description |
|------|-------------|--|
| 1 | 791-180866 | Grip |
| 2 | 791-181688 | Throttle Cable Assembly |
| 3 | 791-180975 | Throttle Trigger |
| 4 | 791-610314 | Throttle Trigger Spring |
| 5 | 791-181689 | Throttle Trigger Assembly (includes 3 & 4) |
| 6 | 791-180252 | Switch Assembly |
| 7 | 791-181690 | Wire Lead Assembly |
| 8 | 791-610327 | Shoulder Harness Clamp |
| 9 | 753-1151 | Handle Assembly (includes 10-11) |
| 10 | 753-1152 | Screw |
| 11 | 753-1154 | Nut |
| 12 | 753-04503 | Drive Shaft Housing Assembly |
| 13 | 791-181570 | Lower Drive Shaft |
| 14 | 791-182200 | Shield Mount Screw Assembly |
| 15 | 791-182193 | 2 piece Gearbox Assembly (includes 27-33) |
| 16 | 791-182195 | Gearbox Mounting Hardware |
| 17 | 791-145569 | Anti-Rotation Screw |
| 18 | 791-182196 | Blade Driver |
| 19 | 753-1158 | Shield and Blade Assembly (includes 20) |
| 20 | 791-682061 | Blade Assembly |
| 21 | 791-612483 | Spool Shaft |
| 22 | 791-683301 | Outer Spool Assembly (includes 23) |
| 23 | 791-612026 | Retainer |
| 24 | 791-610636B | Spring |
| 25 | 791-147495 | Inner Reel |
| 26 | 791-180814B | Bump Head Knob Assembly |

2 Piece Gearbox Assembly Parts - Item 15

| | | |
|----|-------------|--|
| 27 | 791-182191 | Left Housing |
| 28 | 791-182192 | Right Housing |
| 29 | 791-182194 | Pinion Gear Assembly |
| 30 | 791-182199 | Output Shaft Bushing |
| 31 | 791-182198 | Output Shaft Gear |
| 32 | 791-182197 | Output Shaft Assembly (includes 30 & 31) |
| 33 | 753-04348 | Palnut |
| 34 | 791-181616B | Split Boom Coupler Assmby (includes 35-38) |
| 35 | 791-181886 | Nut |
| 36 | 791-181618B | Knob (Includes 35) |

Optional Accessories

| | | |
|---|-------------|-------------------------------------|
| * | 753-1160 | Reel and Line Assembly |
| * | 41AM079G100 | Brush Cutter Accessory Kit |
| * | 753-1161 | Bump Head Assembly (includes 21-26) |
| * | 682075B | Shoulder Harness |

* Items Not Shown