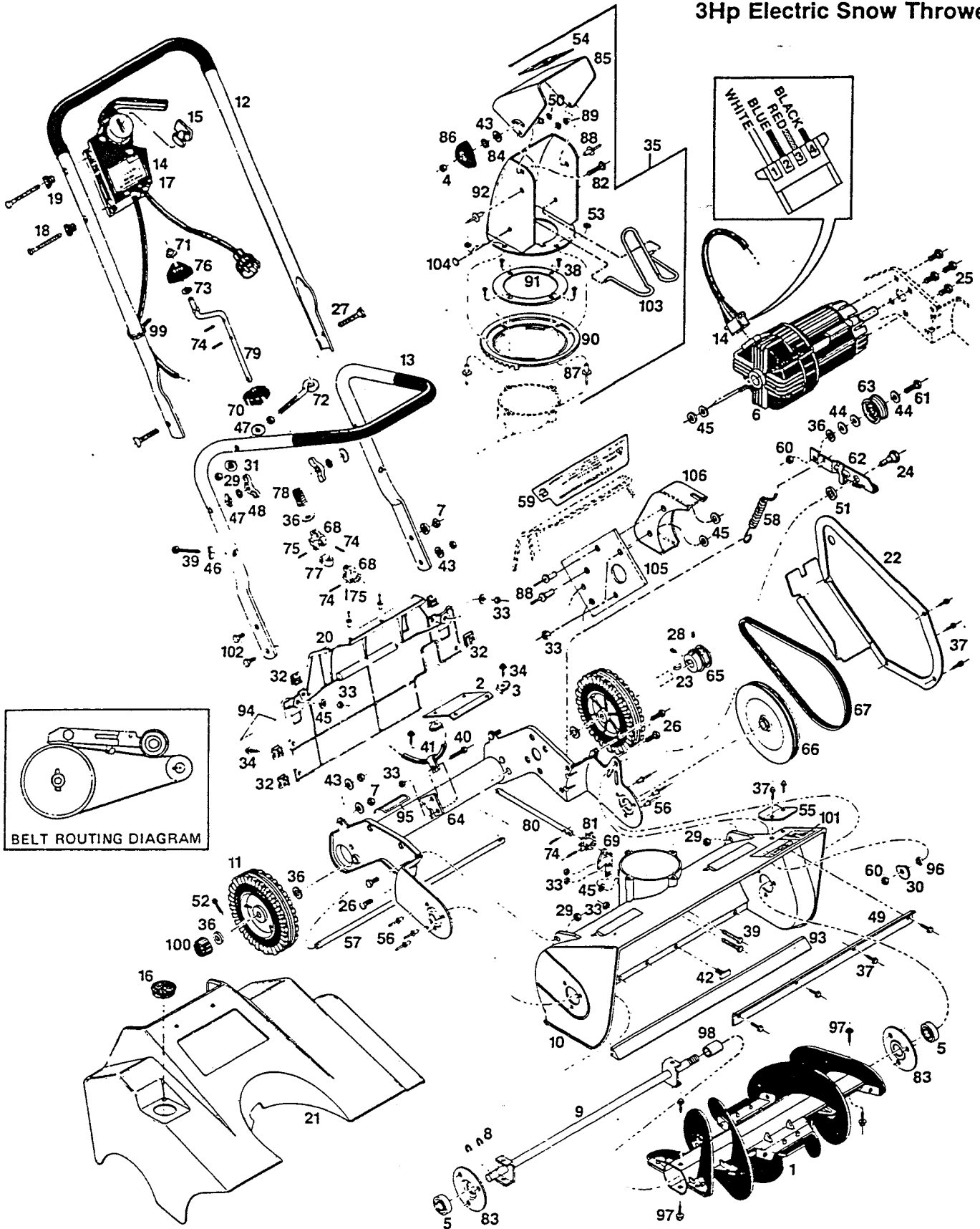


SC 3222ELD
 CH 3222ELD
 A 3222ELD
 4047(Cat. No. 812-1303)
 3Hp Electric Snow Thrower



SC 3222ELD
 CH 3222ELD
 A 3222ELD
 4047 (Cat. No. 812-1303)

PARTS LIST

Ref. No.	Part No.	Description	Ref. No.	Part No.	Description
1	712117	Auger Assembly	52	715029	Cotter Pin
2	772749	Support Bracket - Panel	53	462051	Washer - 129 ID
3	452383	Nut - Tinnerman	54	677690	Decal - Danger Discharge Chute
4	451179	Nut - 1/4-20 Eslock	55	447995	Tab
5	423756	Bearing	56	764225	Pop Rivet 3/16 x 3/8
6	610006	Motor Electric	57	662221	Axle
7	715508	Nut - 1/4-20 Top Lock	58	662809	Spring - Idler Arm
8	789883	Retaining Ring	59	677070	Decal - Control Panel
9	662361	Shaft Assembly	60	715524	Nut - 3/8-16 Center Lock Jam
10	672006	Housing Auger	61	715326	Bolt - 3/8-16 x 1 Hex
11	041129	Wheel - 6" Plastic	62	697300	Idler Arm Assembly
12	657064	Handle - Upper	63	697144	Idler Pulley Assembly
13	732230	Handle Lower	64	791624	Frame Assembly
14	630046	Switch - Motor Control	65	707836	Pulley - Engine
15	672238	Key - Switch	66	662346	Pulley - Auger
16	672402	Hole Plug	67	707117	Belt
17	677377	Decal - Starting Instructions	68	763383	Clevis - U-Joint
18	459446	Screw-10-24 x 1 1/2 Hex Washer Head	69	772434	Bracket - Chute Adjustment
19	111732	Insulator Handle	70	772566	Detent - Chute Adjustment
20	a. 697169	Panel-Back (Red)	71	152579	Push Nut - 5/16
	b. 672428	Panel-Back (Orange)	72	459339	Eyebolt
	c. 672303	Panel-Back (Yellow)	73	715185	Washer - 5/16 Flat
21	a. 697151	Cover-Motor (Red)	74	489088	Pin - Roll 5/32 x 3/4
	b. 672436	Cover-Motor (Orange)	75	489260	Pin - 5/32 x 1/4
	c. 414847	Cover-Motor (Yellow)	76	744292	Knob - 5/16
22	414714	Cover Assembly - Belt	77	751172	Connector - U-Joint
23	150276	Key - Woodruff*	78	775676	Spring - Detent
	154443	Key-1" Long 3/16" to 1/8"***	79	783944	Crank - Chute Discharge Control Guide
24	459891	Bolt - Shoulder 3/8-15 x 1	80	418053	Shaft - Sprocket
25	153593	Bolt - 5/16-18 x 1/2	81	434944	Sprocket - Drive
26	450429	Bolt - 5/16-18 x 3/4	82	450122	Bolt - 1/4-20 x 1 1/2 Carriage
27	151936	Bolt - 5/16-18 x 2 1/4 Curved	83	790725	Retainer - Bearing
28	459776	Set Screw 5/16	84	461715	Washer - 1/4 Star
29	715490	Nut Eslock 5/16-18	85	463968	Deflector - Chute
30	662197	Washer - Back Up	86	744326	Knob 1/4-20 Female
31	151795	Wing Nut 5/16-18	87	764217	Pop Rivet - 1/4
32	452375	Nut - Tinnerman	88	764233	Pop Rivet - 3/16
33	452318	Nut - 10-24 Hex Nylock	89	764241	Eyelet
34	459685	No. 10 x 3/8 Special Screw	90	416909	Gear - Chute
35	433631	Chute Assembly	91	419580	Ring - Chute
36	462309	Washer - 3/8	92	433581	Chute
37	459347	Screw - 10-9 x 3/8 Hex Washer Head	93	435370	Bar - Scraper
38	459354	Screw - 10-9 x 3/8 Flat Head	94	677948	Decal - OPEI B71.3-1985
39	459446	Screw - 10-24 x 1 1/2 Hex Washer Head	95	677880	Decal UL Snow Thrower
40	458687	Screw - 10-24 x 1 1/2 Hex	96	468652	Spacer 3/8-.385 x .187
41	152884	Strain Relief	97	458539	Screw - No. 10-24 x 3/8 Thread Forming
42	459404	Screw - Scraper Bar	98	468660	Spacer - 1/2 x .065 x 1"
43	460584	Washer - 1/4	99	110379	Cable Tie
44	461731	Washer - 3/8 Flat	100	672345	Hub Cap
45	462424	Washer - No. 10 Flat SAE	101	677682	Decal - Auger Housing
46	461004	Washer - 3/8 Curved	102	715052	Bolt - 1/4-20 x 1/2 Hex Head
47	150201	Washer - 5/16 Curved	103	663674	Guard - Chute
48	461665	Washer - 5/16 Shakeproof	104	715102	Ring - 3/16 Push on
49	463984	Baffle - Auger Housing	105	029942	Bracket - Motor Mount
50	153734	Washer - Back Up	106	111807	Cover - Motor Plug
51	468645	Spacer - 1 x 505 x .187			

*Later 1986 Production
 **Early 1986 Production

Note: Motor (Ref. No. 6) and Switch Assembly (Ref. No. 14) are Briggs & Stratton components. Please refer to Briggs & Stratton for parts and service on motors and switch assemblies.