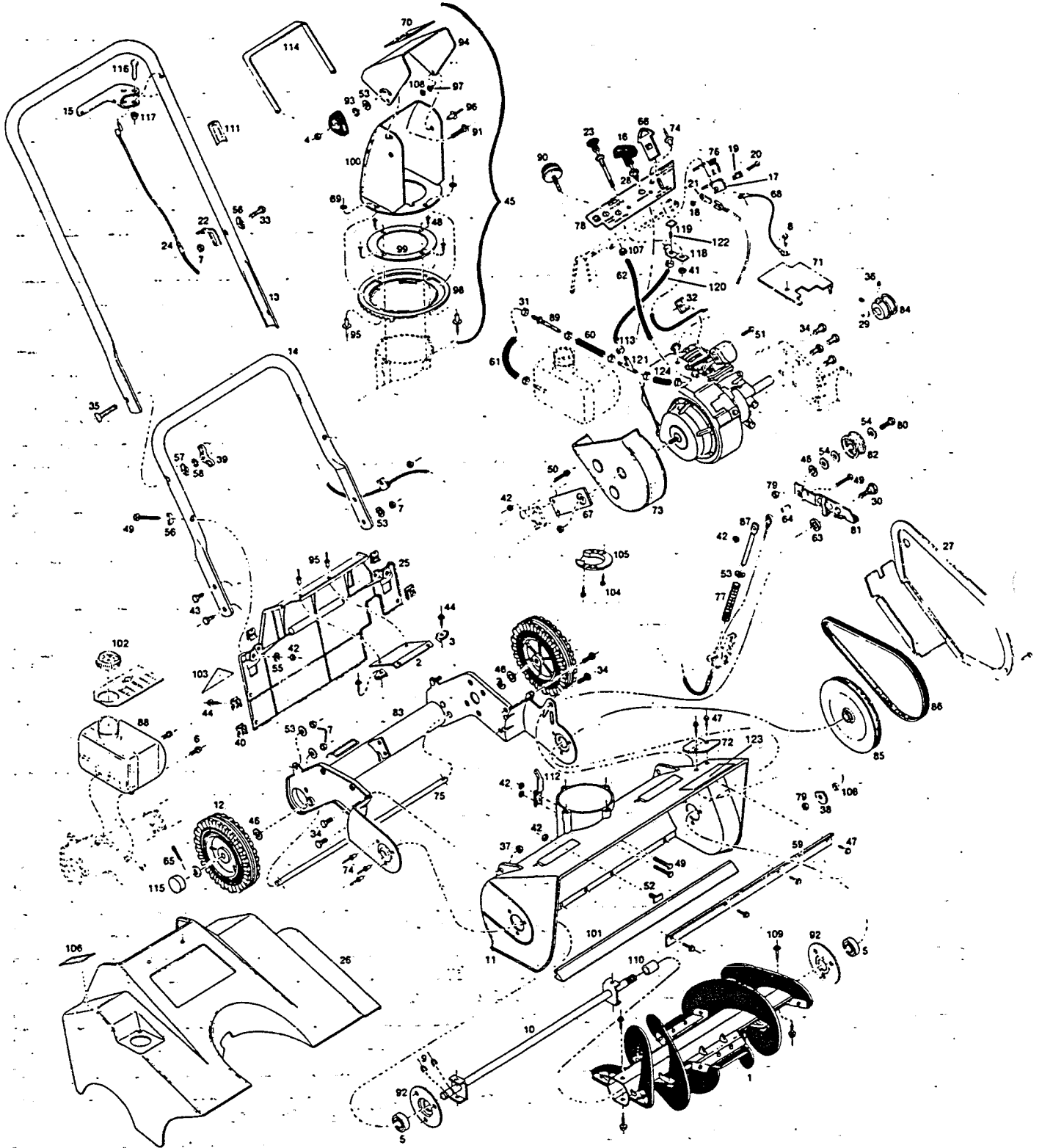


Model SV 3222
3 Hp 2 cy. 22" Snow Blower



PARTS LIST

| Ref. No. | Part No. | Description | Ref. No. | Part No. | Description |
|----------|----------|--------------------------------------|----------|----------|--|
| 1 | 712117 | Auger Assembly | 63 | 468645 | Spacer - 1 x .505 x .187 |
| 2 | 772749 | Support Bracket - Panel | 64 | 468561 | Spacer - No. 10 ID x 3/4 |
| 3 | 452383 | Nut - Tinnerman | 65 | 489344 | Cotter Pin |
| 4 | 451179 | Nut - 1/4-20 Eslock | 66 | 662056 | Key - Switch |
| 5 | 423756 | Bearing | 67 | 742254 | Support - Rear Engine |
| 6 | 153601 | Bolt - 1/4-20 x 3/4 Thread Forming | 68 | 749408 | Wire - Magneto Ground |
| 7 | 715508 | Nut - 1/4-20 Top Lock | 69 | 462051 | Washer - .129 ID |
| 8 | 120048 | Screw - 8-32 x 1/2 | 70 | 677187 | Decal - Deflector |
| 9 | 789883 | Retaining Ring | 71 | 762302 | Shield - Heat Engine |
| 10 | 662361 | Shaft Assembly | 72 | 447995 | Tab |
| 11 | 672006 | Housing Auger | 73 | 762443 | Shield - Blower Engine Plastic |
| 12 | 041129 | Wheel - 6" Plastic | 74 | 764225 | Pop Rivet 3/16 x 3/8 |
| 13 | 662254 | Handle - Upper | 75 | 662221 | Axle |
| 14 | 662262 | Handle - Lower | 76 | 662148 | Spring - Switch |
| 15 | 101659 | Handle - Control | 77 | 775825 | Spring - Idler Arm |
| 16 | 732321 | Handle - Engine | 78 | 677138 | Decal - Control Panel |
| 17 | 662130 | Bracket Switch Assembly | 79 | 451112 | Nut - 3/8-16 Center Lock Jam |
| 18 | 452102 | Nut - 8-32 Keps | 80 | 715326 | Bolt - 3/8-16 x 1 Hex |
| 19 | 452201 | Nut - Plastic | 81 | 779116 | Idler Arm Assembly |
| 20 | 459065 | Screw - 8-32 x 5/8 Phillips Pan Head | 82 | 697144 | Idler Pulley Assembly |
| 21 | 752154 | Connector - leg | 83 | 791624 | Frame Assembly |
| 22 | 772616 | Bracket - Cable Mounting | 84 | 419820 | Pulley - Engine |
| 23 | 780437 | Control - Choke | 85 | 662346 | Pulley - Auger |
| 24 | 645689 | Control - Clutch | 86 | 421370 | Belt |
| 25 | 672303 | Panel - Back | 87 | 431502 | Guide - Spring |
| 26 | 414847 | Cover - Engine | 88 | 432559 | Gas Tank |
| 27 | 414714 | Cover Assembly - Belt | 89 | 672279 | Filter - Fuel |
| 28 | 423749 | Bushing - Starter Rope | 90 | 432633 | Primer |
| 29 | 150276 | Key - Woodruff | 91 | 450122 | Bolt - 1/4-20 x 1-1/2 Carriage |
| 30 | 459891 | Bolt - Shoulder 3/8-16 x 1 | 92 | 790725 | Retainer - Bearing |
| 31 | 447938 | Clamp - Hose 1/2 | 93 | 461715 | Washer - 1/4 Star |
| 32 | 150318 | Clamp - Choke | 94 | 463968 | Deflector - Chute |
| 33 | 450353 | Bolt - 1/4-20 x 1-1/4 Hex | 95 | 764217 | Pop Rivet 1/8 |
| 34 | 450429 | Bolt - 5/16-18 x 5/8 | 96 | 153478 | Pop Rivet 3/16 |
| 35 | 151936 | Bolt - 5/16-18 x 2-1/4 Curved | 97 | 764241 | Eyelet |
| 36 | 459776 | Set Screw 5/16 | 98 | 416909 | Gear - Chute |
| 37 | 715490 | Nut 5/16-18 Top Lock | 99 | 419580 | Ring - Chute |
| 38 | 662197 | Washer - Back Up | 100 | 433581 | Chute |
| 39 | 151795 | Wing Nut 5/16-18 DC | 101 | 435370 | Bar - Scraper |
| 40 | 452375 | Nut - Tinnerman | 102 | 435610 | Cap - Fuel |
| 41 | 452300 | Nut - 3/8-24 Palnut | 103 | 756312 | Decal - OPEI B71.3-1975 |
| 42 | 452318 | Nut - 10-24 Hex Nylok | 104 | 459784 | Screw - No. 10-24 x 3/8 |
| 43 | 457044 | Bolt - 1/4-20 x 1/2 Hex | 105 | 762286 | Deflector - Muffler |
| 44 | 459685 | No. 10 x 5/8 Special Screw | 106 | 677328 | Decal - Starting Instructions |
| 45 | 712232 | Chute Assembly | 107 | 715037 | Nut - 1/4-20 Keps |
| 46 | 462309 | Washer - 3/8 | 108 | 468652 | Spacer - 5/8 - .385 x .187 |
| 47 | 459347 | Screw - 10-9 x 5/8 Hex Washer Head | 109 | 458539 | Screw - No. 10-24 x 3/8 Thread Forming |
| 48 | 459354 | Screw - 10-9 x 5/8 Flat Head | 110 | 468660 | Spacer - 1/2 x .065 x 1 |
| 49 | 459446 | Screw - 10-24 x 1-1/2 Hex | 111 | 760512 | Decal - Auger Control |
| 50 | 525337 | Screw - 10-24 x 1/2 Hex | 112 | 662247 | Bracket - Chute Adj |
| 51 | 459487 | Screw - Engine Choke | 113 | 152892 | 7/16 Hose Clamp |
| 52 | 459404 | Screw - Scraper Bar | 114 | 697276 | Handle - Chute |
| 53 | 460584 | Washer - 1/4 | 115 | 672345 | Hub Cap |
| 54 | 461731 | Washer - 3/8 Flat | 116 | 151027 | Clevis Pin |
| 55 | 462424 | Washer - No. 10 Flat SAE | 117 | 151225 | Cap |
| 56 | 461004 | Washer - 1/4 Curved | 118 | 663500 | Spring Clip - Vent |
| 57 | 150201 | Washer - 5/16 Curved | 119 | 672295 | Pad |
| 58 | 461665 | Washer - 5/16 Shakeproof | 120 | 672329 | Vent Hose |
| 59 | 463984 | Baffle - Auger Housing | 121 | 672311 | "Y" Nipple |
| 60 | 466672 | Fuel Line - Short | 122 | 672337 | Straight Nipple |
| 61 | 466698 | Fuel Line - Long | 123 | 677195 | Decal - Auger Housing |
| 62 | 466706 | Tube - Primer | 124 | 672352 | Fuel Line 2" |

WHEN ORDERING PARTS, USE PART NUMBER, NOT REFERENCE NUMBER