



## MTD MODEL AND SERIAL NUMBER INFORMATION

1997 and beyond

### WHOLE GOODS MODEL NUMBERS

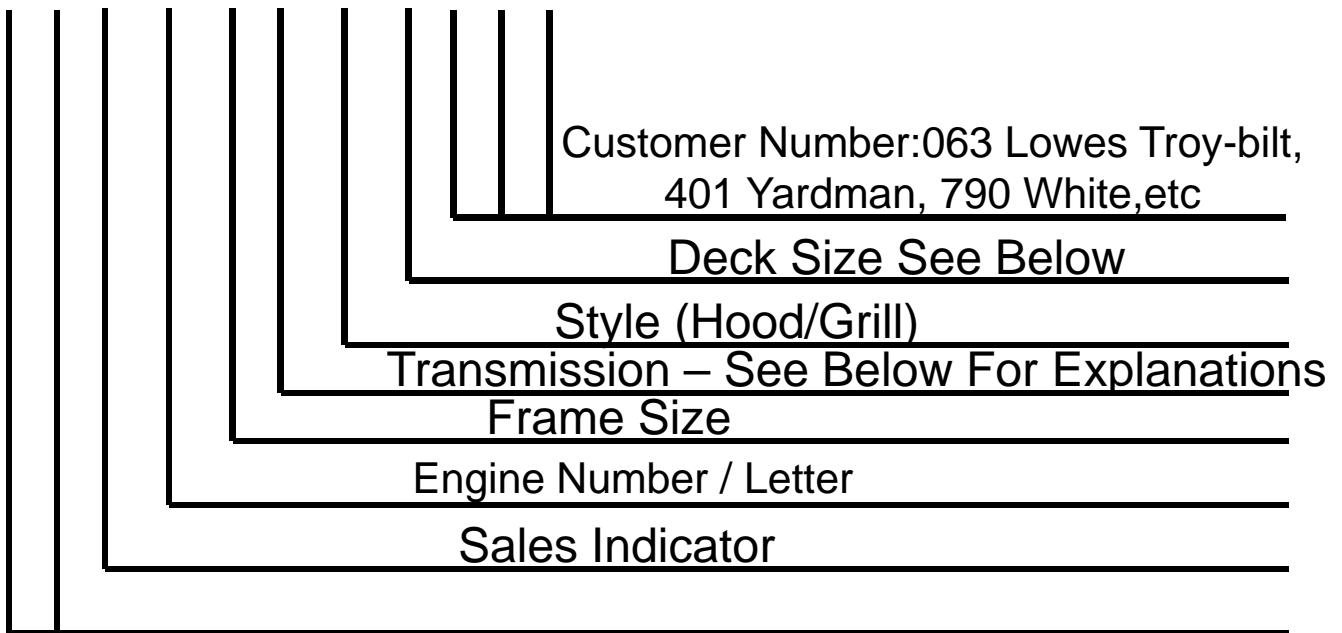
<b>Model examples:</b>	<b><u>Correct Format</u></b>	<b><u>Incorrect</u></b>
Tractor	13AM660F000	LT1842
Trimmer	41AD725B034	TB525
Walk behinds	11A-542Q711	
Self Propelled	12AV835Q711	
Snow Thrower	31AE6GQ3711	
Log Splitter	24AD597D711	LS33T
Tiller	21A-634C711	Bronco

Note that the first 2 digits in the model number indicates the type of product, 11=walk behind, 12=self propelled, 13=lawn tractor, 14-garden tractor, 17=zero turn, 53=zero turn, 21-25=chore performers (tillers, splitters, etc), 31=snow throwers, 41=handheld, 42=refurbished handheld, 45=refurbished handheld covered by Dixie Sales Company

**See Following Pages for More Information**

# Model Numbering System

**1 3 A D 7 8 9 G 7 9 0**



**Product type: 11=push mowers 12=self propelled mowers**

**13=lawn tractor 14=garden tractor 21=tillers 24=chipper shredders / vacs**

**31=snow throwers 41=hand held products**

**Transmissions – 1 = CVT Pedal Drive, 2 = Hydro Pedal Drive,**

**4-8 = Variable Speed Selector, 9 = Lever Controlled Hydro.**

**Deck Sizes – F= 38, G= 42, H = 46, P = 50, K= 54, S = 42 (staggered), T = 46 twin blade**

## **Model Number**

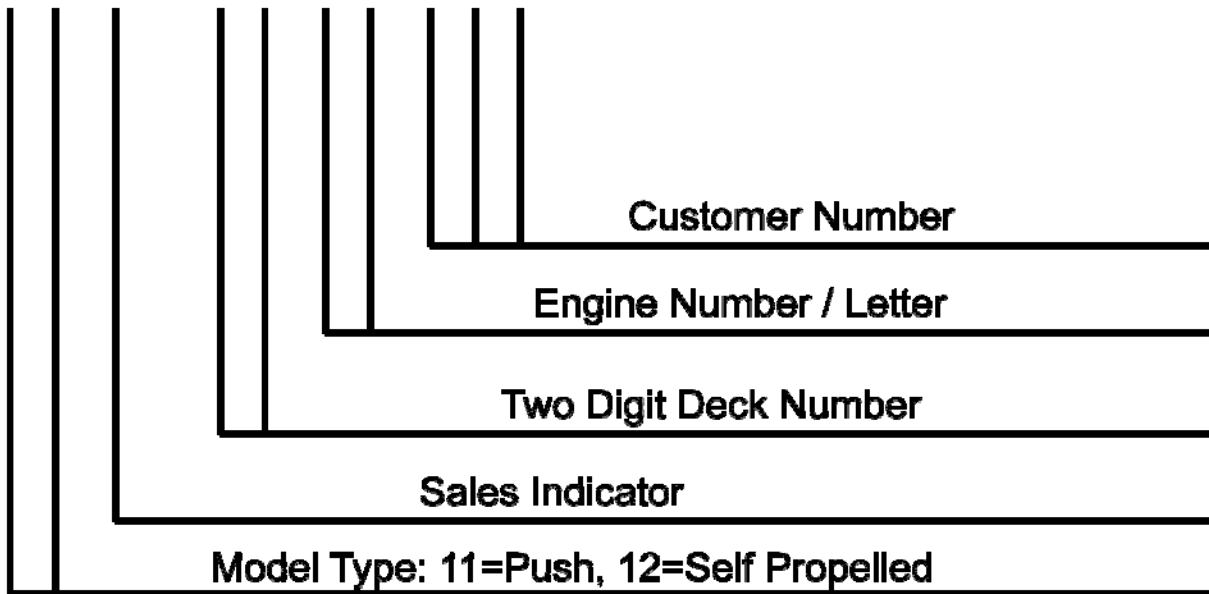
**MTD will be in the Sears stores under the Craftsman name. If it says Craftsman, only a Sears service center can perform warranty.**

### **TORO**

- **Model numbers that end with 744 are made for Toro**
- **Do not attempt warranty on these units**
- **Only Toro dealers can do warranty**
- **The exception is on Hydro-Gear transaxles**

# Walk Behinds

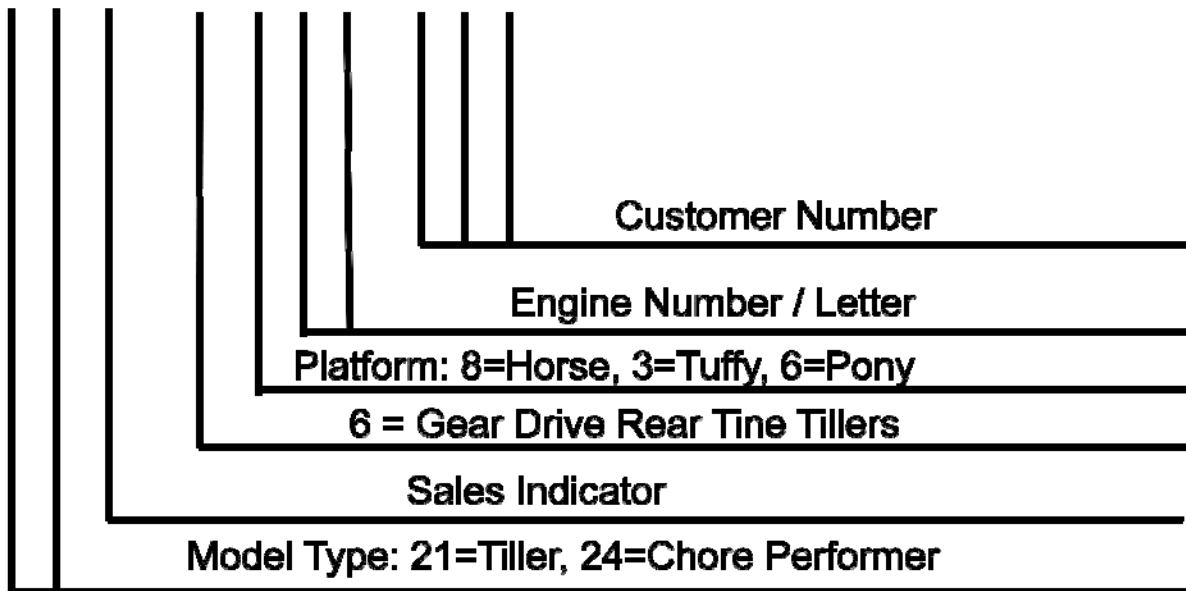
**1 2 A - 9 7 9 L 4 0 1**



# Tillers / Chore Performers

## Example: Troy-Bilt

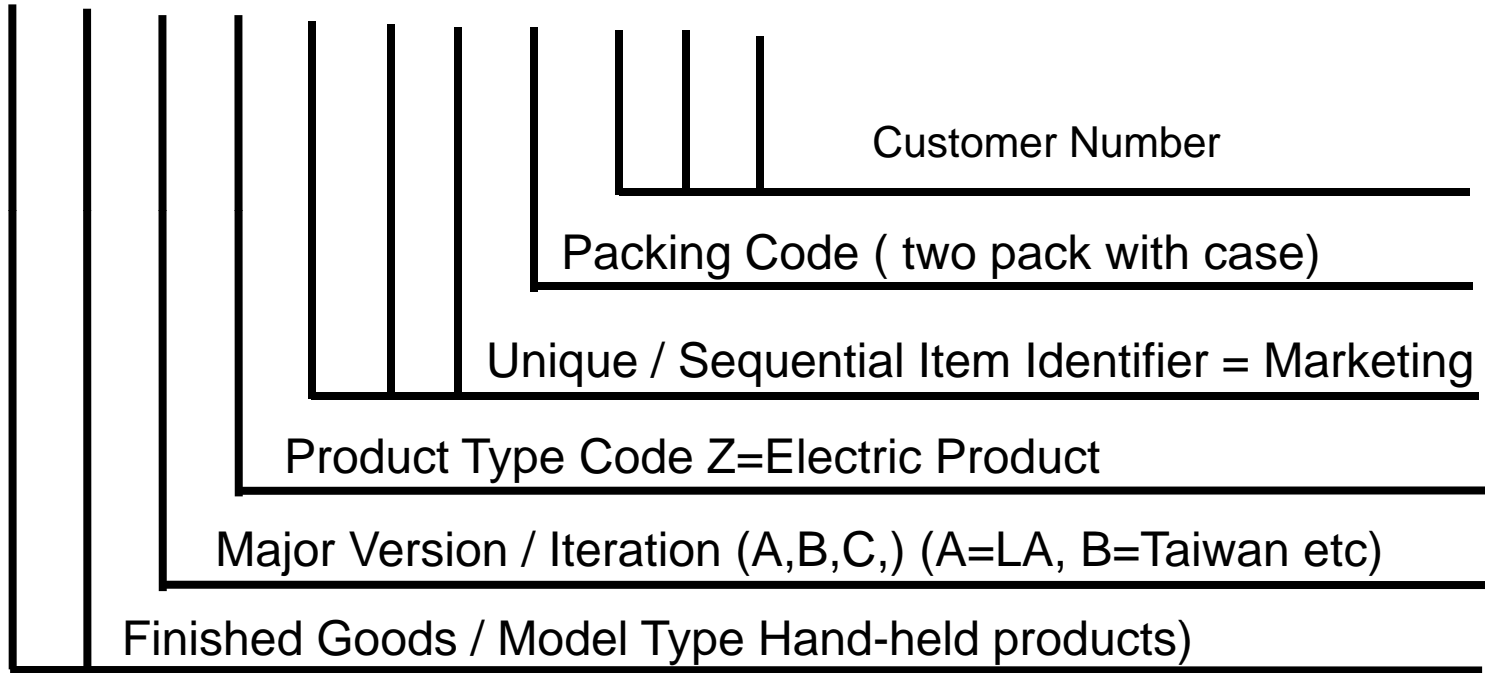
21 A - 6 8 2 J 7 6 6



# Current Handheld Model Numbers

Finished Goods – Codes 21, 41, 42, 49

4 1 B Z 8 8 A R 0 7 7



21 = Tillers, 41 = Handheld, 42 = Reconditioned , 49 = Accessories

# Current Serial Numbers

**2 L 2 1 6 C 2 0 0 0 1**

Sequence unit was manufactured

Assembly line which manufactured unit

Plant where unit was manufactured

Year unit was manufactured 6 = 2006

Day of the month unit was manufactured

Month of the year unit was manufactured

Lot / engineering level. Changes when a major part changes

## **ENGINE MODEL NUMBERS**

MTD 4 cycle engines used on mowers, snow throwers, tillers, etc.

(wheeled goods, not hand held equipment)

Examples: 1P61MUA, 1P65FH,

Key to reading number sequence. **Example 1P61MUA**

Position 1 indicates starter type, recoil, electric, etc. Example is recoil

Position 2 indicates style of engine, vertical or horizontal, example P =vertical single cylinder

Positions 3 and 4 indicates the engine bore in mm., example 61mm

Position 5 indicates the type of product and or shaft length, example M=mower long shaft

Position 6 indicates the EPA compliance, example U=50 state compliance USA

Position 7 (if present) indicates a change or revision from the original engine

## **ENGINE SERIAL NUMBERS**

For MTD 4 Cycle Engines used on mowers, snow throwers, tillers, etc.

(Wheeled goods, not hand held equipment)

Serial numbers for engines, **12 digits required, no exceptions** (required on any and all engine no charge request ( keys, covers, oil plugs, primers, etc). Format is NNNNNNNLNNNN

**Example:**        **0510271A0023**



Key to reading the number sequence

Positions 1 and 2 are the year. Example of 05 indicates 2005

Positions 3 and 4 are the month. Example of 10 indicates October.

Positions 5 and 6 are the day of the month. Example of 27 is the 27<sup>th</sup> day.

Positions 7 and 8 are the production line and shift. Example 1A indicates line 1, first shift (1 being line, A being the shift).

Positions 9, 10, 11, and 12 are the running number for the given line and shift.

The example was produced in 2005, month of October on the 27<sup>th</sup> day on production line 1, shift A (first) and was the 23<sup>rd</sup> made.