



Service Advisory (Chain Saws - SAFETY RECALL)

MTD-051

Models Affected: Troy-Bilt - 41AY00AR966 (TB5020CC), 41AY08AR966 (TB5018CC), 41AY60AR766 (TB4620CC), and 41AY90AR766 (TB4920CC)
Sears Craftsman - 41AY85AR799 (316.350840)

Serial Number Range Affected: Units built prior to June 05, 2006 (Date Code "606...")

(See Page 2 for "How To Read the Serial Number Date Code" and "Model and Serial Number Tag Location")

Date: 11/28/2006

Subject: **MANDATORY REPAIR** - Potential Safety Concern - Front plastic handle may break, making it difficult to hold and control the chain saw.

PRODUCT RECALL - This repair program is being undertaken in cooperation with the U.S. Consumer Product Safety Commission.

Required Action: This repair is to be considered a **MANDATORY** repair.

SYMPTOM(S): It has come to our attention that the chain saw's front plastic handle may break during certain use conditions making it difficult to hold and control the saw. A potential for personal injury exists.

CORRECTIVE ACTION:

Service Dealer: All "Models Affected" within the "Serial Number Range Affected" that are brought into a service dealer for any type of repair or seasonal maintenance must have the front plastic handle inspected per the following instructions.

1. Refer to Figure 1. If the front plastic handle has already been replaced with a good handle there will be a green dot painted on the handle within the handle's recessed area at the lower attach point adjacent to the bar oil fill port.
2. If there is a green dot the unit has been upgraded, stop here. If there is no green dot as shown in Figure 1, order and install the appropriate service kit; **For Troy-Bilt models: 753-05466 ---- For Craftsman models: 753-05406.**

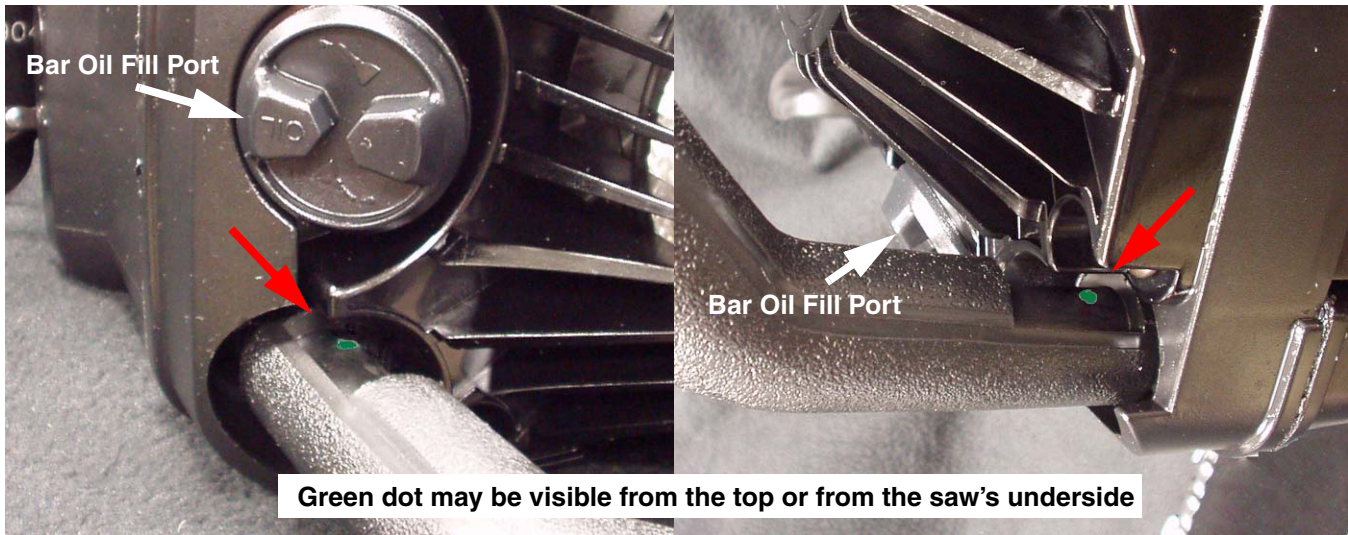


FIGURE 1

Warranty: Normal warranty terms apply. With a hack saw, cut the original handle in half and discard. Indicate Service Advisory MTD- 051 and P/N 9228-31B202 as the original failed part on the claim. Repair time allowance is **15 Minutes (0.25 Hrs)**. List model and serial number of the unit.

SERVICE MANAGER	PARTS MANAGER	SALES MANAGER	SERVICE TECH.	SERVICE TECH.

How to Read the Serial Number Date Code

Serial Number Format: "509B0107023"

The first character represents the last digit of the year (4 = 2004; 5 = 2005)

The second and third characters represent the month of the year (04 = April; 09 = September; 12 = December)

Example: "5 09 B0107023" - Unit was built in September of 2005 (9/2005)

Year Month

Model and Serial Number Tag Location:

Refer to Figure 2. The manufacturer's white model & s/n tag will be located on the lower left rear saw housing next to the fuel filler port or on the control handle in the area shown.

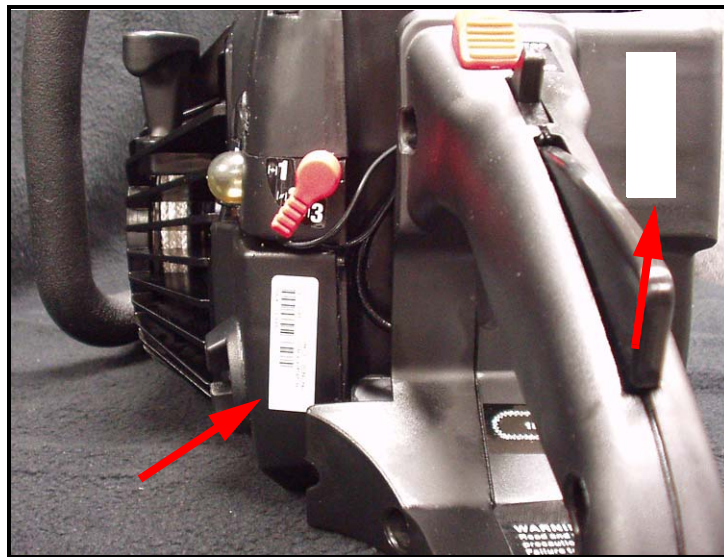


FIGURE 2

SAFETY RECALL

TROY-BILT TWO-CYCLE GASOLINE CHAIN SAWS

The front handle may break during use.

**Do not use the chain saw until you obtain
and install a free Service Kit.**



Troy-Bilt Models Affected 18" or 20" bar

**41AY00AR966, 41AY60AR766,
41AY90AR766 and 41AY08AR966**

Sold between January 1, 2004 through June 1, 2006

**To receive a free Service Kit call
Troy-Bilt Customer Service toll free between
8 AM and 5 PM EST and choose Option 4.**

**1-888-848-6038
or visit our website
www.troybilt.com**

Post until March 31, 2007

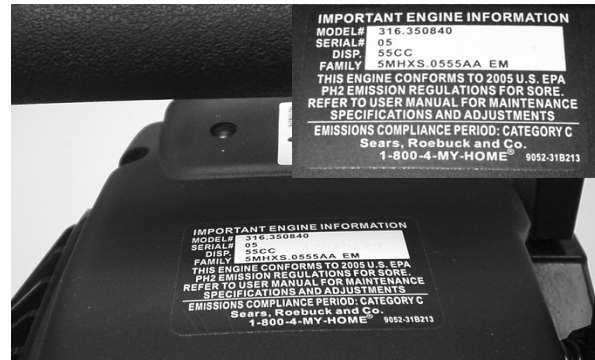
In cooperation with the U.S. Consumer Product Safety Commission

SAFETY RECALL

Craftsman Model 316.350840 “Incredi-Pull” Gasoline Chain Saw

In cooperation with the U.S. Consumer Product Safety Commission (“CPSC”), MTD Products Inc. is voluntarily recalling the following Craftsman model chain saw. The front handle of the chain saw may break during use, making it difficult for the operator to hold and control the chain saw.

While other brand names are also affected by this recall, the only Craftsman brand chain saw that is subject to this recall program is model number 316.350840. Sears and Kmart sold the affected chain saw between February 1, 2005, and June 5, 2006, for \$ 189.00 to \$ 229.99. Please check your chain saw, as shown below, to see if it is covered by this recall.



Craftsman Model Affected 316.350840

IF YOU PURCHASED ONE OF THESE CHAIN SAWS, STOP USING THE CHAIN SAW IMMEDIATELY AND INFORM EVERYONE ELSE WHO MAY INTEND TO USE THE CHAIN SAW OF THE POTENTIAL SAFETY HAZARD.

Those customers who purchased the chain saw from Sears should receive a Service Kit in the mail by December 30, 2006. The Service Kit will include a new handle, three (3) screws, a screwdriver, and instructions for customers to replace the existing handle with the new handle.

Those customers who purchased the chain saw from Kmart must call the phone number below in order to obtain the Service Kit.

If you purchased this chain saw but did not receive a Service Kit by December 30, 2006, or if you have any questions about this recall, please call Sears toll free at:

1-800-659-7026

Monday – Saturday between 7:00 A.M. and 9:00 P.M. Central Time

Post through March 31, 2007

News from CPSC

U.S. Consumer Product Safety Commission

Office of Information and Public Affairs

Washington, D.C. 20207

For Immediate Release
November 28, 2006
Release #07-040

Firm's Recall Hotline: (888)-848-6038
CPSC Recall Hotline: (800) 638-2772
CPSC Media Contact: (301) 504-7908

MTD Southwest Inc. Recalls Troy-Bilt, Craftsman Chain Saws, Breaking Handles Pose Laceration Hazard

WASHINGTON, D.C. – The U.S. Consumer Product Safety Commission, in cooperation with the firm named below, today announced a voluntary recall of the following consumer product. Consumers should stop using recalled products immediately unless otherwise instructed. (To access color photos of the following recalled products, see CPSC's Web site at www.cpsc.gov.)

Name of Product: Troy-Bilt and Craftsman Brand Gasoline Chain Saws

Units: About 76,000

Importer: MTD Southwest Inc., of Tempe, Ariz.

Hazard: The chain saw's plastic front handle can break during operation. If this occurs, the saw would be difficult to control and poses a risk for lacerations.

Incidents/Injuries: MTD has received two reports of consumers losing control of the saw when the handles broke during use. One consumer reported bruising to his elbow and the other received burns to his fingers after contacting the muffler when the chain saw he was using broke and he lost control of the saw.

Description: These Troy-Bilt and Craftsman brand chain saws are powered by a two-cycle gasoline engine ranging in size from 46cc to 55cc. They are equipped with either an 18-inch or 20-inch bar. There are four Troy-Bilt models affected: 41AY00AR966, 41AY60AR766, 41AY90AR766 and 41AY08AR966. There is one Craftsman model affected: a 55cc two-cycle gasoline engine with an 18-inch bar and model number 316.350840. The model number of the chain saw is located on the engine casing.

Sold at: The Troy-Bilt brand chain saws were sold at independent retailers, home improvement and hardware stores nationwide from January 2004 through June 2006 for between \$200 and \$250. The Craftsman brand chain saws were sold at Sears and Kmart stores nationwide from January 2004 through June 2006 for between \$190 and \$230.

Remedy: Consumers should stop using these chain saws immediately, and contact MTD to receive a free service kit with a replacement handle and installation instructions. Sears customers will be mailed a free service kit with a replacement handle and installation instructions.

Consumer Contact: For more information, contact MTD toll-free at (888)-848-6038 between 8 a.m. and 5 p.m. ET Monday through Friday, or log onto the company's Web site at www.troybilt.com. Sears customers should call Sears at (800) 659-7026 between 7 a.m. and 9 p.m. CT Monday through Saturday.



The U.S. Consumer Product Safety Commission is charged with protecting the public from unreasonable risks of serious injury or death from more than 15,000 types of consumer products under the agency's jurisdiction. Deaths, injuries and property damage from consumer product incidents cost the nation more than \$700 billion annually. The CPSC is committed to protecting consumers and families from products that pose a fire, electrical, chemical, or mechanical hazard. The CPSC's work to ensure the safety of consumer products - such as toys, cribs, power tools, cigarette lighters, and household chemicals - contributed significantly to the 30 percent decline in the rate of deaths and injuries associated with consumer products over the past 30 years.

To report a dangerous product or a product-related injury, call CPSC's hotline at (800) 638-2772 or CPSC's teletypewriter at (800) 638-8270 or visit CPSC's Web site at www.cpsc.gov/talk.html. Consumers can obtain this release and recall information at CPSC's Web site at www.cpsc.gov.

####