

# Homelite®

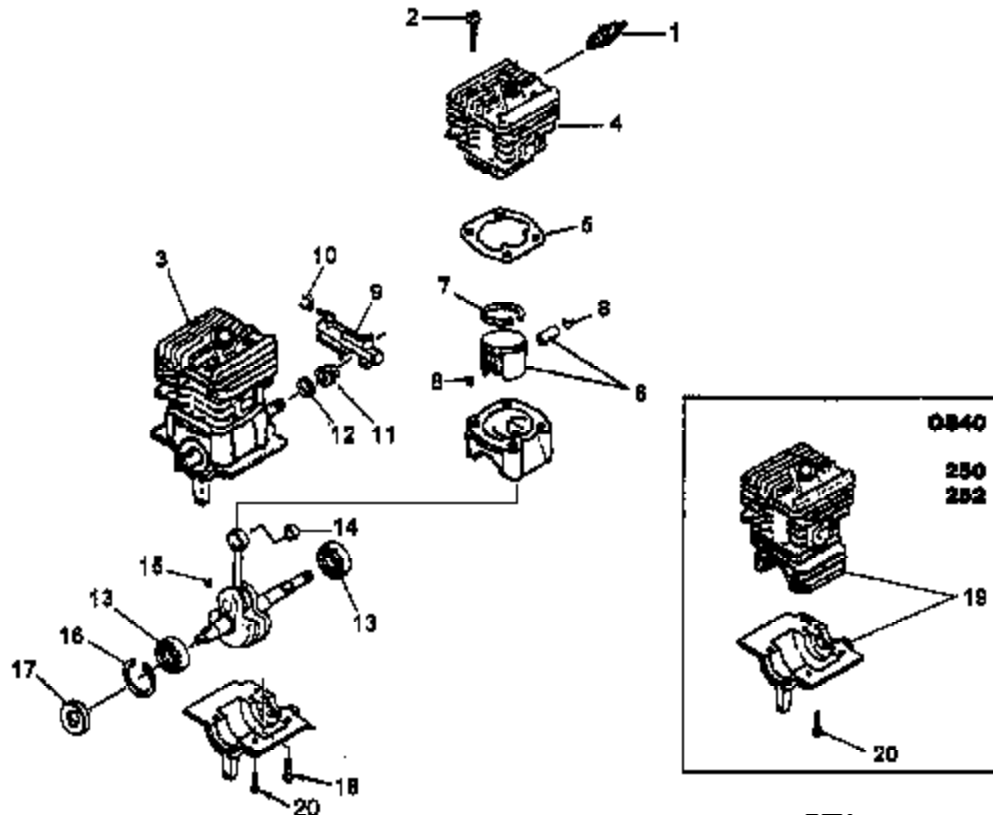
- GB PARTS LIST
- F LISTE DE PIÈCES
- D TEILELISTE
- I ELENCO DEI PEZZI
- E LISTA DE PIEZAS

**CS40** ... UT10707, A  
... UT10708, A  
**CS50** ... UT10710- A, B  
UT10711- A, B  
**250** ... UT10724- B, C  
**300** ... UT10687- B, C  
UT10700- A, B  
UT10725, B, C  
**252** ... UT10732  
UT10732- A  
UT10733  
UT10733- A

Printed in U.S.A.  
Imprimé aux E.-U.  
Gedruckt in den U.S.A.  
Stampato negli Stati Uniti  
Impreso en EE. UU.

P/N 16952  
REV. 1

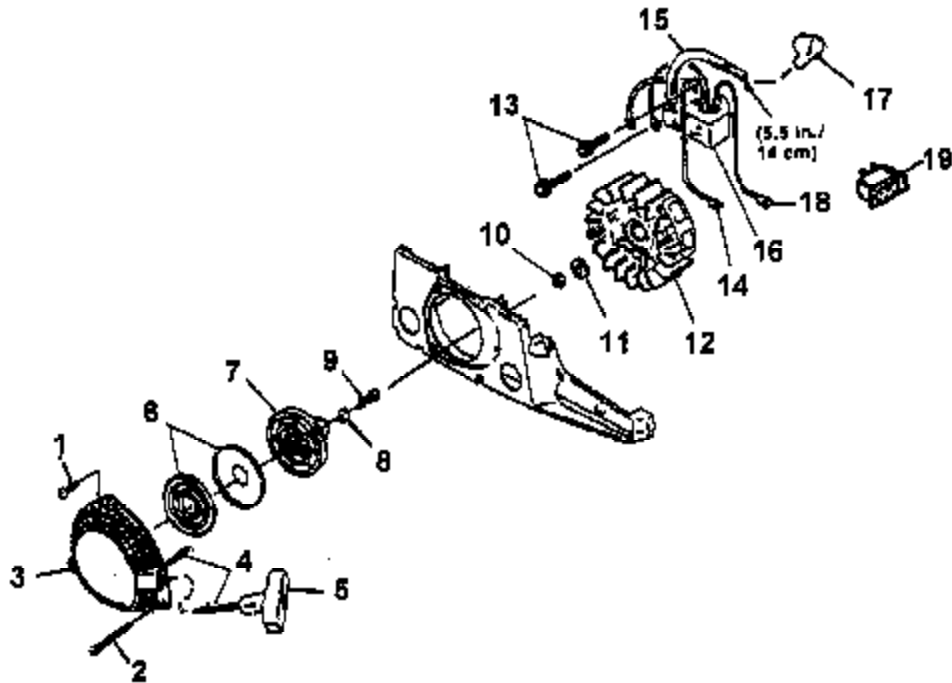
# ENGINE INTERNAL



NO.	PART NO.	DESCRIPTION	QTY.					
			0840	250	252	300	CS50	
1	98261-S 98217-S	SPARK PLUG (CJ6Y) SPARK PLUG (RCJ6Y) (Intl.)	1	1	1	1	1	1
2	82568	SCREW-PAN Hd.(10-24 x .800)				4	4	4
3	*A-04511 *A-01544-D	SHORT BLOCK SHORT BLOCK				1	1	1
4	*A-04513	CYLINDER & GASKET				1	1	1
5	02527	GASKET, CYLINDER				1	1	1
6	*A-02579-C	PISTON & PIN	1	1	1	1		
7	01545-A	RING, PISTON	1	1	1	1		
8	64813	RING, WRIST PIN RETAIN.	2	2	2	2		
6	*A-03301	PISTON & PIN					1	1
7	02263-A	RING, PISTON					2	2
8	64813	RING, WRIST PIN RETAIN.					2	2
9	A-02802-A	OIL PUMP	1	1	1	1	1	1
10	02546	TUBING, OIL (TO GUIDE BAR)	1	1	1	1	1	1
11	00229	WORM GEAR, LEFT HAND	1	1	1	1	1	1
12	93858	SEAL, CRANKSHAFT	1	1	1	1	1	1
13	96797	BEARING, BALL	2	2	2	2	2	2
14	70277	BEARING, NEEDLE	1	1	1	1	1	1
15	75078	WOODRUFF KEY	1	1	1	1	1	1
16	28922-1	RETAINING RING	1	1	1	1	1	1
17	96197-A	SEAL, SHAFT	1	1	1	1	1	1
18	82146	SCREW,OIL PUMP (8-32 X 5/8")	2	2	2	2	2	2
19	*A-02577-C	CYLINDER & CRANKCASE	1	1	1	1		
20	80891	SCREW, Hex Hd. (12-24 X 7/8")	4	4	4	4		

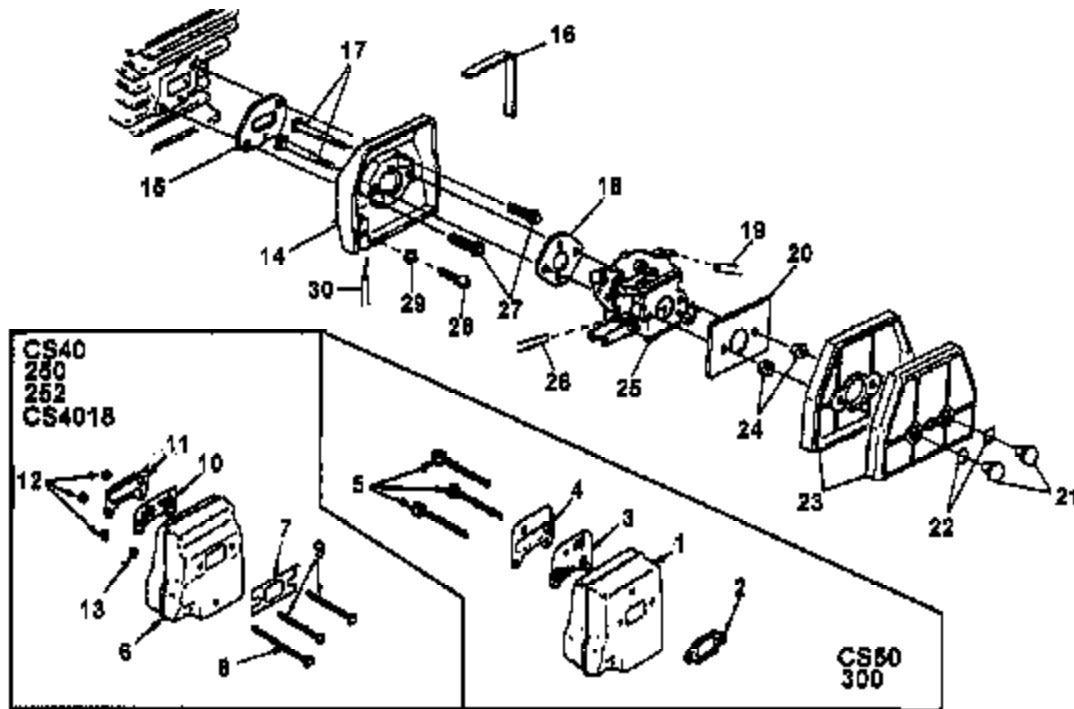
Assembly  
Ensembles  
Bausätze  
Composés  
Conjuntos

## STARTER - IGNITION



NO.	PART NO.	DESCRIPTION	QTY.				
			CS90	300	350	300	CS90
1	82546	SCREW-Thread Form (8-18 x 5/8")	4	4	4	4	4
2	82544	SCREW-Thread Form (8-16 x 2")	1	1	1		
	82566	SCREW Thread Form (8-16 x 2 1/4)				1	1
3	A-04778-A	STARTER - COMPLETE	1	1	1	1	1
4	97899-01	ROPE, STARTER (46")	1	1	1	1	1
5	02264	GRIP, STARTER	1	1	1	1	1
6	A-97908	SPRING & CONTAINER	1	1	1	1	1
7	97768-B	PULLEY	1	1	1	1	1
8	94062	WASHER	1	1	1	1	1
9	82409	SCREW Plastite(10-14 x 5/8")	1	1	1	1	1
10	81124-A	NUT, JAM	1	1	1	1	1
11	83102	WASHER LOCK (3/8)	1	1	1	1	1
12	A-00994-B	ROTOR & STARTER PAWLS	1	1	1	1	1
13	88052	SCREW, Sems Hex Hd. (10-24 x 7/8")	2	2	2	2	2
14	A-01821-A	IGNITION GROUND WIRE	1	1	1	1	1
15	95098	SLEEVE, Insulating	1	1	1	1	1
16	A-01546	IGNITION MODULE	1	1	1	1	1
17	A-02597	SPARK PLUG BOOT KIT	1	1	1	1	1
18	A-01822	IGNITION WIRE	1	1	1	1	1
19	01802	SWITCH	1	1	1	1	1

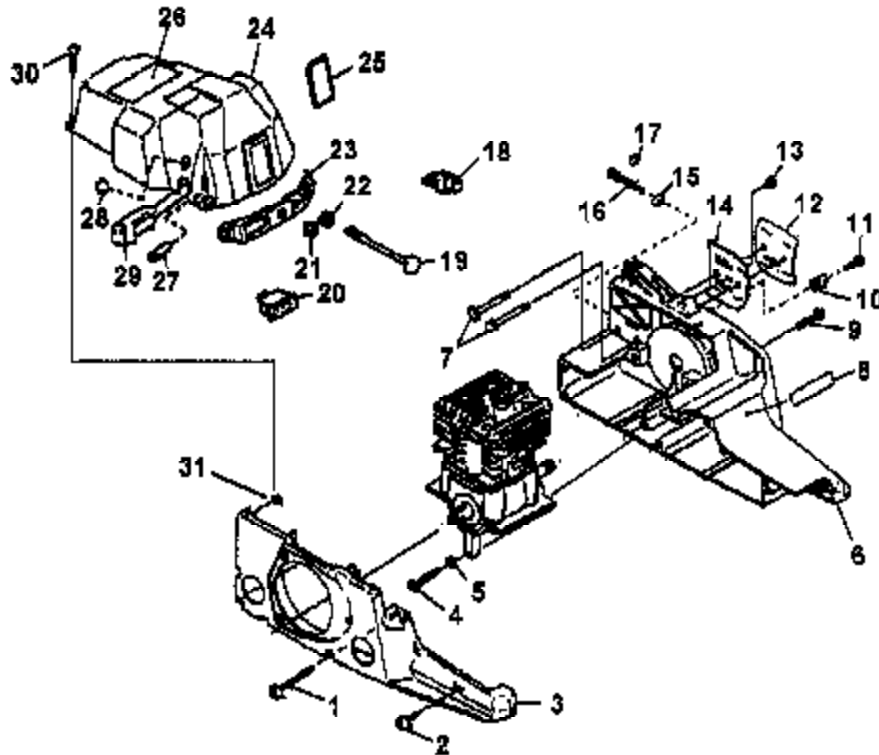
# CARBURETOR - MUFFLER



NO.	PART NO.	DESCRIPTION	QTY.				
			CS40	250	252	300	CS50
1	A-06852	MUFFLER - Complete				1	1
2	01726	GASKET- Muffler				1	1
3	01733	SCREEN- Spark Arrestor				1	1
4	01734-B	COVER- Exhaust				1	1
5	86058	SCREW-Sems (10-24 x 2 1/4)				3	3
8	A-06831	MUFFLER - Complete	1	1	1		
7	01543-B	GASKET-Muffler	1	1	1		
8	02178	SCREW- Square Hd. (10-32 x 2 1/2)	1	1	1		
9	02509	SCREW- Square Hd. (10-32 x 2 1/4)	2	2	2		
10	01532	SCREEN-Spark Arrestor	1	1	1		
11	01531-A	COVER- Exhaust	1	1	1		
12	81208	NUT Locking (10-32)	3	3	3		
13	84009	WASHER- Flat (#12)	1	1	1		
14	A-04512	SPACER- Carburetor				1	1
16	04608	GASKET- Carburetor Spacer				1	1
18	03141	FOAM- Adhesive				1	1
14	A-02583	SPACER-Carburetor	1	1	1		
15	00202-B	GASKET- Carburetor Spacer	1	1	1		
16	01823	FOAM- Adhesive	1	1	1		
17	00905-A	SCREW- Carburetor Retainer	2	2	2	2	2
18	98339	GASKET-Carburetor	1	1	1	1	1
19	70310-38	TUBING-Rubber (8")	1	1	1	1	1
20	02696	RETAINER PLATE	1	1	1	1	1
21	01178	RETAINER NUT- Filter	2	2	2	2	2
22	02718	"O" RING	2	2	2	2	2
23	A-02582-A	AIR FILTER	1	1	1	1	1
24	81009	NUT- Hex (8-32)	2	2	2	2	2
25	A-03935	CARBURETOR (Walbro WT224)	1	1	1		
	A-03884	CARBURETOR (Zama C1Q-H27)				1	1
	A-04481	CARBURETOR (Walbro WT282)				1	1
26	70310-18	TUBING- Rubber (4 3/4")	1	1	1	1	1
27	82430	SCREW Mech. Hex Hd. (8-32 x 7/8")	2	2	2	2	2
28	82613	SCREW Thread Form. (8-18 x 5/8")	1	1	1	1	1
29	84123	WASHER Flat (#8)	1	1	1	1	1
30	00997-D	CABLE Throttle	1	1	1	1	1

Assembly  
Ensembles  
Bausätze  
Compleas  
Conjuntos

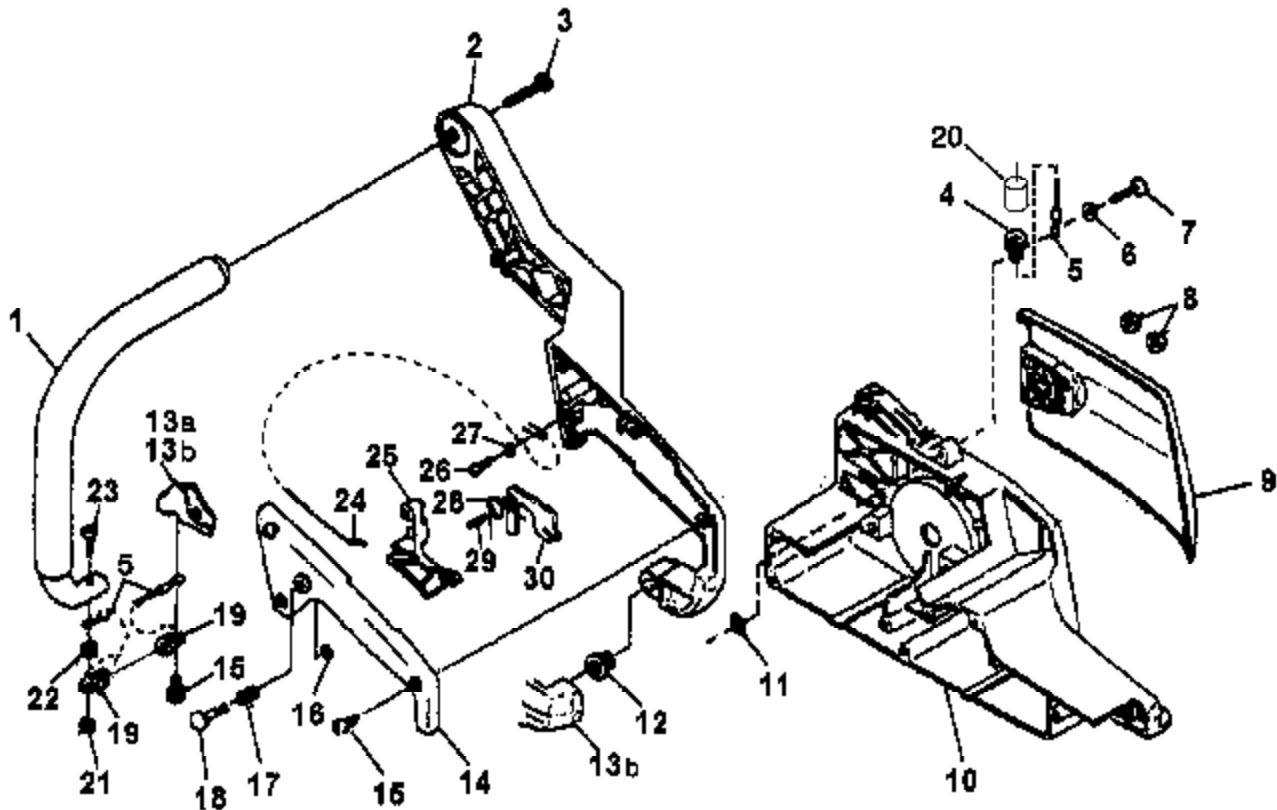
# ENGINE HOUSING



Assembly  
Ensembles  
Baustitze  
Completo  
Conjuntos

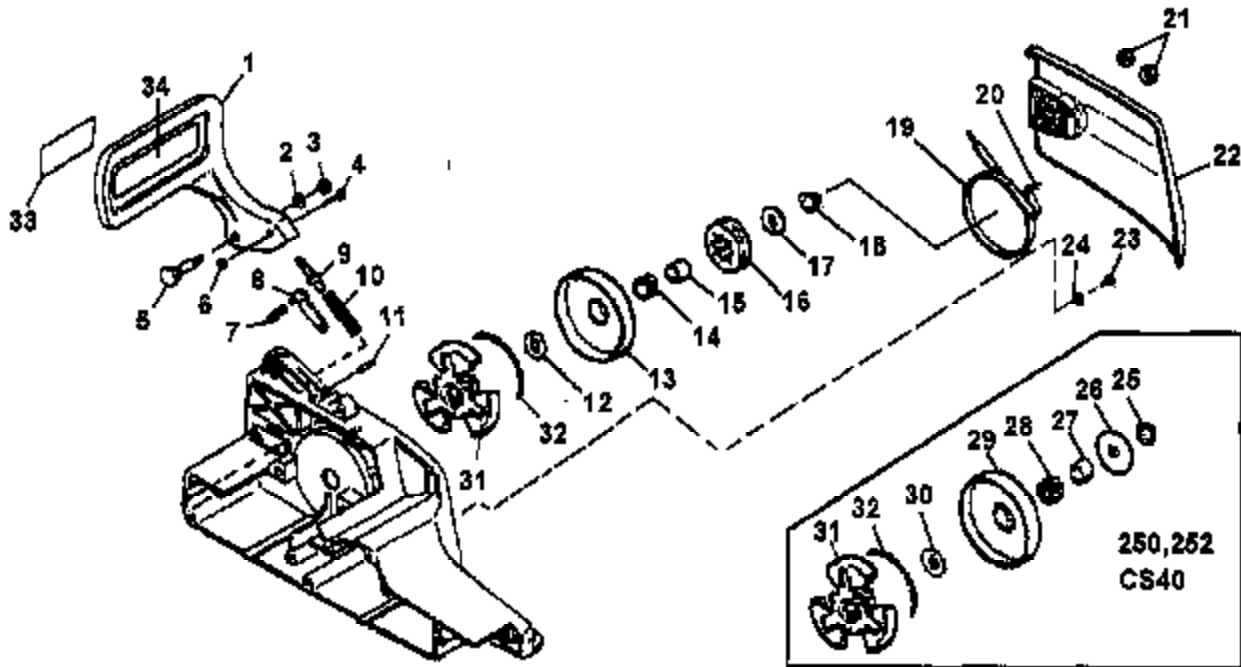
NO.	PART NO.	DESCRIPTION	QTY.				
			CS90	250	252	300	CS99
1	82545	SCREW- Thread Form (8-16 x 1 3/4")	3	3	3	3	3
2	82546	SCREW- Thread Form. (8-16 x 5/8")	4	4	4	4	4
3	00207-1B	HOUSING-Starter Side	1	1	1		
	01715-1A	HOUSING-Starter Side				1	1
4	82588	SCREW-Thread Form. (10-14 x 1 1/8")	1	1	1	1	1
5	83056	WASHER-Lock	1	1	1	1	1
6	A-03720-B	HOUSING- Drive Side	1	1	1	1	1
7	03132	BOLT- Guide Bar	2	2	2	2	2
8	01805-A	DECAL- Panel	1	1	1	1	1
9	80604	SCREW-Hex Hd. (12-24 x 1")	2	2	2	2	2
10	95212	STOP- Chain	1	1	1	1	1
11	82537	SCREW- Thread Form (10-14 x 7/8")	1	1	1	1	1
12	01170	PLATE- Guide Bar (Outer )	1	1	1	1	1
13	82513	SCREW- Thread Form. (8-18 x 1/2")	1	1	1	1	1
14	98278	PLATE- Guide Bar (Inner)	1	1	1	1	1
15	65112-1	PIN- Adjusting	1	1	1	1	1
16	08138	SCREW- Guide Bar Adjusting	1	1	1	1	1
17	68698	RING- Snap	1	1	1	1	1
18	01183	BULB- Primer	1	1	1	1	1
19	01527-A	ROD- Choke (UT10687-B)	1	1	1	1	1
20	01802	SWITCH- Ign.	1	1	1	1	1
21	68888	BOOT- Throttle Cable	1	1	1	1	1
22	64862	GROMMET- Choke	1	1	1	1	1
23	01168	PANEL- Control	1	1	1	1	1
24	A-04583	CYLINDER COVER					1
25	01178-A	SCREEN- Air Inlet					1
26	02508	LABEL- Warning				1	1
24	A-02581-C	CYLINDER COVER	1	1	1		
25	01173-A	SCREEN- Air Inlet	1	1	1		
26	02506	LABEL- Warning	1	1	1		
27	01172	GROMMET- Carburetor	1	1	1		
28	01178-A	PLUG- Idle Speed	1	1	1		
29	04373	GROMMET- Carburetor	1	1	1	1	1
30	95792	SCREW- Round Hd. (10-24 x .710)	3	3	3	3	3
31	70810	NUT- Square (10-24)	3	3	3	3	3

### HANDLES - 250 - 252 - 300



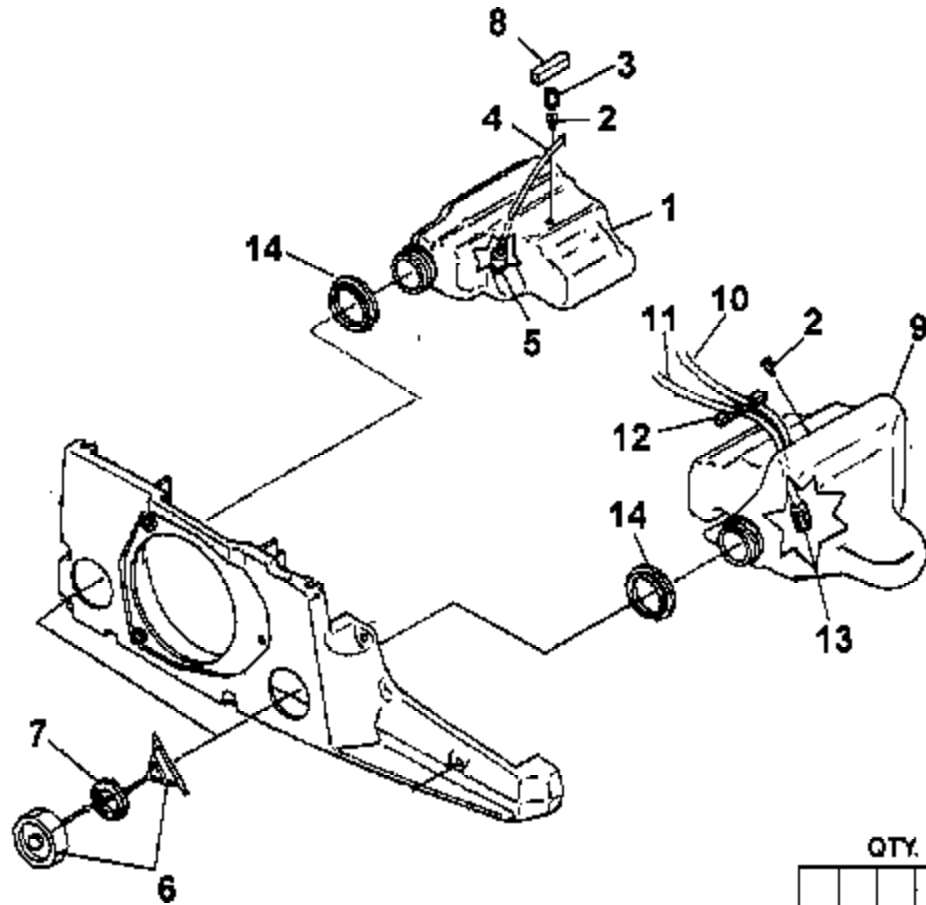
NO.	PART NO.	DESCRIPTION	QTY.		
			250	252	300
1	A-03496	HANDLE BAR	1	1	1
2	03945	REAR HANDLE	1	1	1
3	80881	SCREW, HEX Hd (12-24 X 7/8")	1	1	1
4	02813	SPRING, EXTENSION	1	1	1
5	03583	RETAINER, SPRING	2	2	2
6	94008	WASHER, FLAT (#12)	2	2	2
7	82562	SCREW, PAN Hd. (10-24 X 7/8")	1	1	1
8	81196	NUT, HEX	2	2	2
9	A-00226-A	COVER, DRIVE CASE	1	1	1
10	A-03720-B	ENG. HSG. DRIVE SIDE	1	1	1
11	70810	NUT, SQUARE (# 10-24)	1	1	1
12	02508	ISOLATOR, VIBRATION	2	2	2
13a	01716-1A	HSG., STARTER SIDE			1
13b	00207-1B	HSG., STARTER SIDE	1	1	
14	00210-C	COVER, REAR HANDLE	1	1	1
16	82546	SCREW, THREAD FORM (8-16 X 5/8")	6	5	5
16	58409	RING, RETAINING	1	1	1
17	95020	SPRING, COMPRESSION	1	1	1
18	96671	PIN, THROTTLE LOCK	1	1	1
19	01166	SPRING, EXTENSION	1	1	1
20	01813	SLEEVE, SPRING	2	2	2
21	81261	NUT, HEX	2	2	2
22	94008	WASHER, FLAT (#12)	2	2	2
23	88620	SCREW, TORX (10-24 X 1/2")	1	1	1
24	00997-D	CABLE, THROTTLE	1	1	1
25	A-09806-A	TRIGGER, THROTTLE	1	1	1
26	82513	SCREW, THREAD FORM (8-18 X 1/2")	1	1	1
27	84123	WASHER, FLAT	1	1	1
28	02316	SPRING, THROTTLE	1	1	1
29	70263	PIN, DOWEL	1	1	1
30	93385-A	LOCK, THROTTLE	1	1	1

# CLUTCH & CHAIN BRAKE



NO.	PART NO.	DESCRIPTION	QTY.					
			250	252	CS40	CS40	CS40	
1	A-06757	GUARD, HAND		1	1	1		
2	83203	WASHER, BELLVILLE		1	1	1		
3	98457	NUT - (M5)		1	1	1		
4	98422-A	PIN		1	1	1		
5	88461	SCREW, SHOULDER		1	1	1		
6	01820	RING, RETAINER		1	1	1		
7	88308	SPRING, COIL		1	1	1		
8	A-98317-A	BRAKE LATCH ASSY.		1	1	1		
9	A-00888-A	ADJUSTER, BRAKE		1	1	1		
10	00890	SPRING, COMPRESSION		1	1	1		
11	88456	PIN		1	1	1		
12	58833	WASHER, THRUST (INNER)				1		
13	A-02980	SPLINE & DRUM				1		
14	02898	BEARING, NEEDLE				1		
15	03038	RACE, INNER				1		
16	07341	SPROCKET, RIM (.325 X 7T)				1		
17	85027	WASHER, THRUST	1	1	1	1		1
18	81255	NUT, HEX LOCK (3/8"-24)	1	1	1	1		1
19	A-98298-B	BRAKE BAND ASSY		1	1	1		
20	06872	PIN, DOWEL		1	1	1		
21	81188	NUT, HEX	2	2	2	2		2
22	A-00228-A	COVER, DRIVE CASE	1	1	1	1		1
23	82513	SCREW, THREAD FORM (#8)		1	1	1		
24	01180	RETAINER, BRAKE BAND		1	1	1		
25	81255	NUT, HEX LOCK (3/8"-24)	1	1	1	1		1
26	86064	WASHER, THRUST	1	1	1	1		1
27	88423	RACE, INNER	1	1	1	1		1
28	64333	BEARING, NEEDLE	1	1	1	1		1
29	00986-A	SPROCKET & DRUM	1	1	1	1		1
30	85027	WASHER, THRUST	1	1	1	1		1
31	A-00695	CLUTCH ASSY	1	1	1	1		1
32	98453	SPRING, CLUTCH	1	1	1	1		1
33	02561-A	LABEL, KICKBACK		1	1	1		
34	02561	DECAL, SAFETY	1	1	1	1		1

## FUEL & OIL TANKS



NO.	PART NO.	DESCRIPTION	QTY.				
			CS40	250	260	300	CS50
1	•A-06636	OIL TANK ASSY.	1	1	1	1	1
2	03134	VALVE-Check	1	1	1	1	1
3	03585	PIN-Spr/ol	1	1	1	1	1
4	70310-28	TUBING- Rubber (7 1/4")	1	1	1	1	1
5	A-66583	FILTER- Oil	1	1	1	1	1
6	A-00904-A	CAP- Tank (w/Retainer)	1	1	1	1	1
7	02762-A	GASKET-Fuel Cap	1	1	1	1	1
8	69443	FILTER- Oil Tank Valve	1	1	1	1	1
9	•A-06637	FUEL TANK ASSY.	1	1	1	1	1
2	03134	VALVE- Check	1	1	1	1	1
6	A-00904-A	CAP- Tank (w/Retainer)	1	1	1	1	1
7	02762-A	GASKET-Fuel Cap	1	1	1	1	1
10	70310-21	TUBING-Rubber (5 1/4")	1	1	1	1	1
11	70310-38	TUBING- Rubber (9")	1	1	1	1	1
12	02952	FILTER- Foam	1	1	1	1	1
13	49422	FILTER- Fuel	1	1	1	1	1
14	00993	SAWDUST SEAL	2	2	2	2	2

Assembly  
 Ensemble  
 Bausätze  
 Complessi  
 Conjuntos



**ACCESSORIES  
ACCESSOIRES  
ZUBEHÖR  
ACCESSORI  
ACCESORIOS**

<b>BUMPER SPIKE KIT</b> _____ <b>A-02177</b>	<b>COMPRESSION TESTER</b> _____ <b>84194</b>
Jeu de crampon d'amortisseur	Appareil d'essai de compression
Stoßstangen-Spikesatz	Verdichtungs-Prüfgerät
Kit dels punts del paraurti	Tester a compressi6n
Juego de punta del amortiguador	Medidor de compresi6n
<b>RUBBER TUBING (10')</b> _____ <b>70310-99</b>	<b>CARBURETOR REPAIR TOOL</b> _____ <b>17789</b>
Tubus en cauchouc (3,05 m)	Outil de r6paration de carburateur
Gummirohr (3,05 m)	Yargaser-Reparaturwerkzeug
Dotto di gomma (3,05 m)	Atrezzo di riparazione del carburatore
Tubo de caucho (3,05 m)	Herramienta de reparaci6n del carburador
<b>GREASE- Multi-Purpose (Sprocket bearing-PT guide bar)</b> _____ <b>18433</b>	<b>SHIM (.0125")</b> _____ <b>24306</b>
Grasse universelle (Peller de pignon-PT - lame-guide)	Calce (0,31mm)
Mehrzweck-Schmiermittel (Kettenradlager - PT - Führungsschiene)	Distanzstück (0,31mm)
Grasso, multiscopo (Cuscinetto della ruota dentata - PT - Barra di guida)	Zeppa (0,31mm)
Grasa de uso general (Cajinete de la rueda dentada - PT - barra guía)	Calce (0,31mm)
<b>STARTING ROPE (250 ft. Reel)</b> _____ <b>96052-A</b>	<b>DIGITAL TACHOMETER</b> _____ <b>18418</b>
Cordon de lanceur (75 m bobine)	Compte-tours numérique
Startseil (75 m Spule)	Digitale-Drehzahlmesser
Corda d'avviamento (bobina da 75 m)	Tachometro digitale
Cuerda de arranque (carreta da 75 m)	Tacómetro digital
<b>DIGITAL TACHOMETER</b> _____ <b>18418</b>	<b>CLUTCH ASSEMBLY TOOL</b> _____ <b>18080</b>
Compte-tours numérique	Outil de montage d'embrayage
Digitale-Drehzahlmesser	Kupplungszusammenbau-Werkzeug
Tachometro digitale	Affrezzo del gruppo frizione
Tacómetro digital	Herramienta de armado del embrague
<b>GUIDE BAR, (power tip) (18")</b> _____ <b>PT-16321-H6</b>	<b>SEALANT SILICON</b> _____ <b>24823</b>
Lame guide, (Extrémité motrice) (40,64cm)	Matériau d'étanchéité au silicone
Führungslange, (Antriebspitze) (40,64cm)	Silicon-Dichtungsmasse
Lama, (Punta di potenza) (40,64cm)	Sigillo al silicone
Barra guía, (Punta de potencia) (40,64cm)	Sellador de silicio
<b>GUIDE BAR (power tip) (18")</b> _____ <b>PT-18321-H6</b>	<b>WRENCH (combination)</b> _____ <b>A-24834</b>
Lame guide, (Extrémité motrice) (43,72cm)	Clé combinée
Führungslange, (Antriebspitze) (43,72cm)	Schraubenschlüssel Kombination
Lama, (Punta di potenza) (43,72cm)	Chiave combinata
Barra guía, (Punta de potencia) (43,72cm)	Llave combinada
<b>GUIDE BAR, (power tip) (20")</b> _____ <b>PT-20321-H6</b>	<b>PULLER- Magneto Rotor</b> _____ <b>A-24747-A</b>
Lame guide, (Extrémité motrice) (50,80cm)	Extracteur, rotor magnéto
Führungslange, (Antriebspitze) (50,80cm)	Abziehwerkzeug-Magnetrotor
Lama, (Punta di potenza) (50,80cm)	Rotore d'estrazione a magnete
Barra guía, (Punta de potencia) (50,80cm)	Extractor-rotor de magneto
<b>GUIDE BAR, (sprocket tip) (18")</b> _____ <b>SP-16321-H6</b>	<b>T-25 TORX DRIVE BIT</b> _____ <b>24682-D2</b>
Lame guide, (Extrémité à pignon) (40,64cm)	Foret torx T-25
Führungslange, (Kettenradpitze) (40,64cm)	T-25 Torx-Antriebsbit
Lama, (Punta de rueda dentada) (40,64cm)	Punta Torx Drive T-25
Barra guía, (Punta de rueda dentada) (40,64cm)	Broca de empuje T-25 Torx
<b>GUIDE BAR, (sprocket tip) (20")</b> _____ <b>SP-20321-H6</b>	<b>SHIM (.015" AIR GAP)</b> _____ <b>22486</b>
Lame guide, (Extrémité à pignon) (50,80cm)	Calce (écari da 0,38 mm)
Führungslange, (Kettenradpitze) (50,80cm)	Distanzscheibe (0,38 mm Luftspalt)
Lama, (Punta de rueda dentada) (50,80cm)	Spessore (spinlerometro 0,38 mm)
Barra guía, (Punta de rueda dentada) (50,80cm)	Suplemento (espacio da 0,38 mm)
<b>SAFE-T-TIP</b> _____ <b>A-70775-B</b>	<b>TESTER (Spark Plug)</b> _____ <b>GF-20322-5</b>
SAFE-T-TIP	Appareil de contrôle (bougie)
SAFE-T-TIP	Prüfgerät (Zündkerze)
SAFE-T-TIP	Tester (candela)
SAFE-T-TIP	Probador de bujía
	<b>CLUTCH SPANNER</b> _____ <b>A-01182</b>
	Clé à embrayage
	Kupplungs-Öberflächenschlüssel
	Chiave della frizione
	Llave para embrague
	<b>CHAIN (32-MD50-87) (18")</b> _____ <b>DI-L7267-AH</b>
	Chaîne (32-MD50-87) (40,64cm)
	Kette (32-MD50-87) (40,64cm)
	Cadena (32-MD50-87) (40,64cm)
	<b>CHAIN (32-MD50-73) (18")</b> _____ <b>DI-L7273-AH</b>
	Chaîne (32-MD50-73) (45,72cm)
	Kette (32-MD50-73) (45,72cm)
	Cadena (32-MD50-73) (45,72cm)
	<b>CHAIN (32-MD50-79) (20")</b> _____ <b>DI-L7279-AH</b>
	Chaîne (32-MD50-79) (50,80cm)
	Kette (32-MD50-79) (50,80cm)
	Cadena (32-MD50-79) (50,80cm)