



ILLUSTRATED PARTS LIST

MAC 930-935-940

CALIFORNIA 90

ZETA 140-145 - PM 374-484

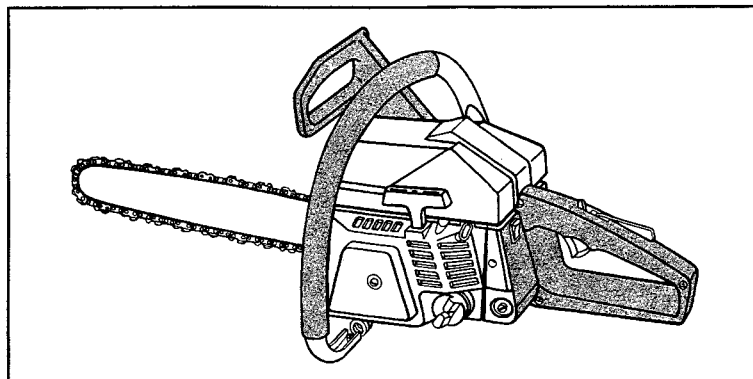
EUROMAC

S30i-S35i-S36i-S40i-S41

TITAN 35-40

SERIAL NUMBER PREFIX 02-03

CE



April 1997

Small Engine Parts

C 1	FIGURE 2	64	● 228855	1	
A 2	92879	1	C 65	● 300870	1
3	228968	1	66	229250 M5x8	2
4	● 229237	2	67	228597	1
5	● 228975 M5x55	2	68	228853	1
C 6	228929 MAC-ZETA-PM 1	C 69	235115	1	
C	227609 CALIFORNIA 901	B 70	235864 .325"	1	
C	240799 EUROMAC 1	B	95646 3/8"	1	
C	229466 TITAN 1	B 71	235287	1	
7	● 229164 M4x35	1	B 72	235073	1
8	● 235048	2	B 73	229137	1
B .9	● 235040	1	74	235812 M5x16	1
B 10	● 235372	1	75	237001 MAC-PM-ZETA 1	
A 11	● 235042	1		237055 CALIFORNIA 901	
12	● 235431	1		240800 EUROMAC 1	
13	● 235944	1		229464 TITAN 1	
14	229018	1	76	● 228943	2
15	229082	2	C 77	228934	1
16	240592	2	A 78	235217	2
17	228653	1	A 79	235574	1
18	235218	1	80	● 235367	1
19	235138 Prefix 02	1	82	228955	1
	241204 Prefix 03	1	83	235184	1
B 20	● 235518	2	84	235205	1
B 21	● 235517	2	85	235226	1
B 22	● 235516	2	C 86	229064	1
C 23	228416	1	87	229740	1
24	● 235238	1	88	235177	1
25	228139	1	89	236997 M5x30	7
26	235806 M5x20	4	B 90	240674	1
B 27	235551	1	91	228907 M5x52	2
C 28	● 235510	1	C 92	228909	1
B 29	235552	1	93	228908 M4x14	4
C 30	● 235511	1	C 94	226022	1
31	235716	1	A 95	227692	1
C 32	● 235741	1	96	229129	1
B 33	● 229809	1	98	236732	1
C 34	● 235675	1	C 99	235281	1
A 35	● 240452	2	C100	FIGURE 3	
36	240592	1	101	228655 MAC-PM-TITAN 1	
37	227565 M5x25	4		229145 CALIFORNIA 90-ZETA 1	
38	235802 M5x14	8		240816 EUROMAC 1	
B 39	240673	2	102	228910	1
40	247716	1	103	235020	1
41	● 228935	2	104	235225	2
42	● 228122	1	105	235163	1
43	● 235190	1	106	235216	4
44	● 235230	1	107	228911	1
45	● 235900	1	C108	240672	1
46	● 235899	1	B109	228892	1
C 47	● 228872	1	110	228722 MAC-PM-TITAN 1	
48	● 235222	1		237054 CALIFORNIA 901	
49	● 94006	1		229216 ZETA 1	
50	● 235075	1		240797 EUROMAC 1	
51	● 235221	1	111	229163 M5x30	2
C 52	● 235229	1	C112	246729 MAC-PM-EUROMAC 1	
53	235729	1		ZETA-CALIFORNIA 90	
C 54	● 229260	1	C	246795 TITAN 1	
56	235670	1	C113	● 228913	1
57	235672	1	C114	● 228922	1
58	240937 Prefix 02	1	115	● 229088	1
	241202 Prefix 03	1	C116	● 240841	1
C 59	● 235742	1	C117	● 228138	1
C 60	102164 Prefix 02	1	118	● 240862	5
C	227631 Prefix 03	1	B119	240675	1
61	229075	1	120	235248	5
B 62	246660	1	121	240669	1
C 62A	● 228854	1	122	229217	1
63	● 240164	1			

B Kit gasket PN 246943 (*-28-30-92-95-96)
 B Kit guarnizioni PN 246943 (*-28-30-92-95-96)
 B Kit joint PN 246943 (*-28-30-92-95-96)
 B Kit dichtung PN 246943 (*-28-30-92-95-96)

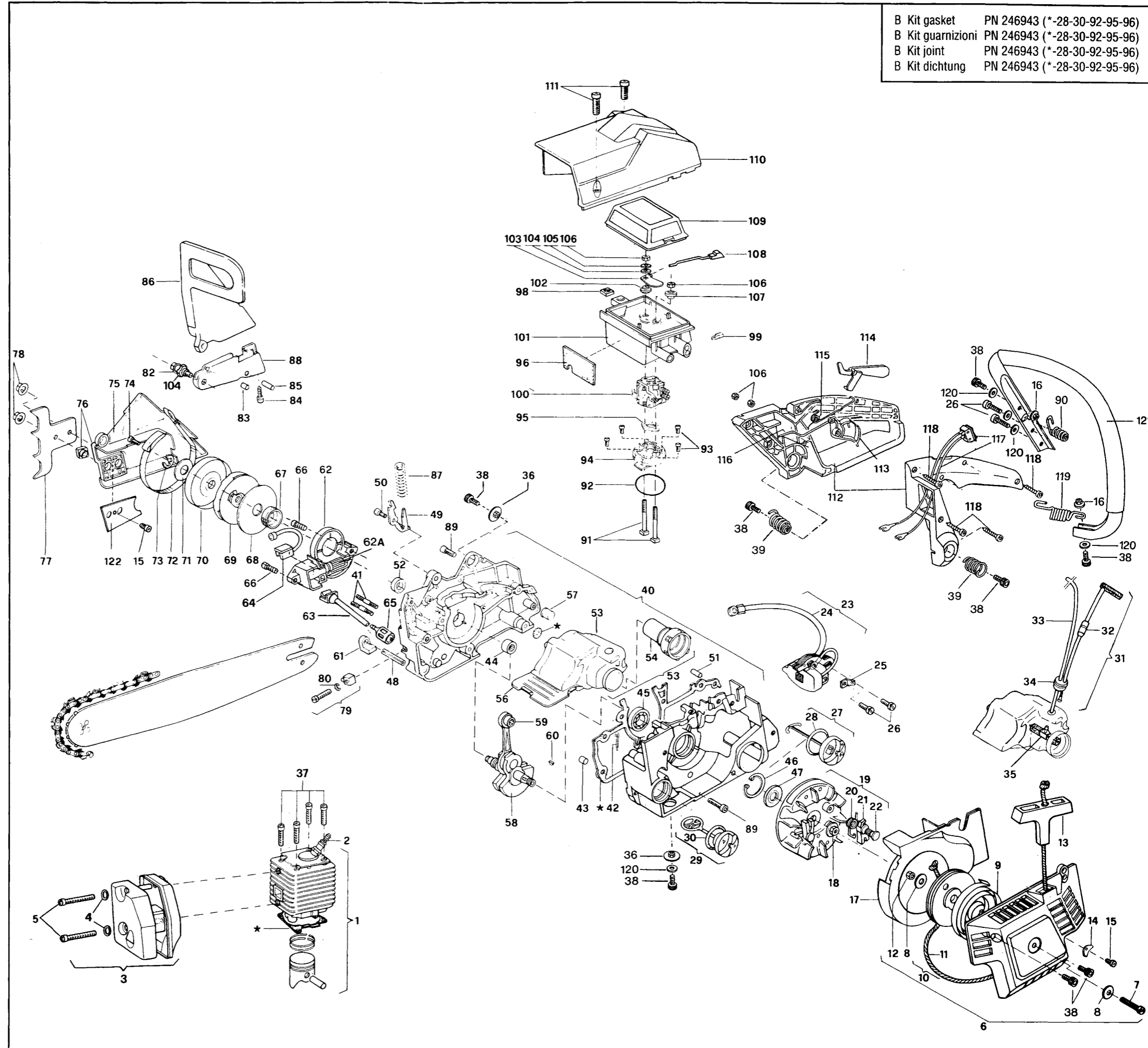


FIGURE 1

A = high moving - alta rotazione - haute demande - große Nachfrage
 B = medium moving - media rotazione - moyenne demande - mittelmäßige Nachfrage
 C = slow moving - bassa rotazione - basse demande - wenige Nachfrage

	30 cc	C 1 247713 1 B 2 ● 235135 1 C 3 ● 235376 1 4 ●● 235008 2 B 5 ●● 235006 2
	35 cc	C 1 247714 1 B 2 ● 235135 1 C 3 ● 235799 1 4 ●● 235008 2 B 5 ●● 235677 2
	40 cc	C 1 247715 1 B 2 ● 235135 1 C 3 ● 235797 1 4 ●● 235008 2 B 5 ●● 235678 2

FIGURE 2

WALBRO	
WT 113	C - 229439 carbur. B 1 ● 229198 1 A 2 ●● 229191 1 3 ● 226037 1 4 ● 226038 1 5 ● 226039 1 6 ● 229600 1 7 ● 246953 1 8 ● 229927 1 9 ● 229601 1 C 10 ● 246952 1
30 cc	
WT 130	C - 229597 carbur. B 1 ● 229198 1 A 2 ●● 229191 1 3 ● 246951 1 4 ● 226038 1 5 ● 226039 1 6 ● 229600 1 7 ● 246954 1 8 ● 229927 1 9 ● 229601 1 C 10 ● 246952 1
35 cc	
WT 55	C - 228527 carbur. B 1 ● 229198 1 A 2 ●● 229191 1 3 ● 226037 1 4 ● 226038 1 5 ● 226039 1 6 ● 229600 1 7 ● 229599 1 8 ● 229927 1 9 ● 229601 1 C 10 ● 246952 1
40 cc	

ZAMA	
C1Q M24	C - 229738 carbur. B 1 ● 226226 1 A 2 ●● 226227 1 3 ● 226228 1 4 ● 226229 1 5 ● 226230 2 6 ● 226231 1
30 cc	
C1Q M25	C - 229739 carbur. B 1 ● 226226 1 A 2 ●● 226227 1 3 ● 226228 1 4 ● 226229 1 5 ● 226230 2 6 ● 226231 1
35 cc	
C1Q M26	C - 229990 carbur. B 1 ● 226226 1 A 2 ●● 226227 1 3 ● 226233 1 4 ● 226234 1 5 ● 226230 2 6 ● 226231 1
40 cc	

FIGURE 3

A = high moving - alta rotazione - haute demande - große Nachfrage
B = medium moving - media rotazione - moyenne demande - mittelmäßige Nachfrage
C = slow moving - bassa rotazione - basse demande - wenige Nachfrage