

# **McCULLOCH**®

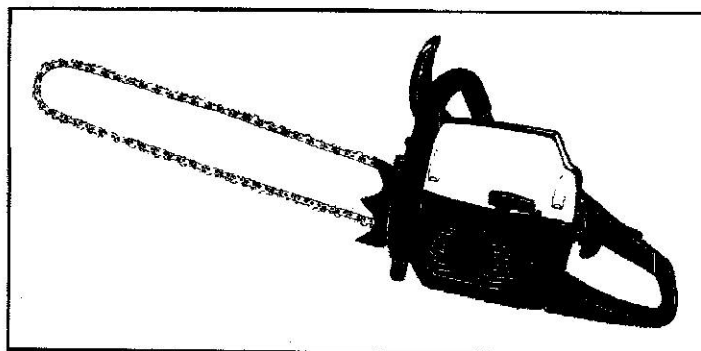
## ***PARTNER***

### ILLUSTRATED PARTS LIST

**PROMAC 54**  
**PROMAC 61**  
**PARTNER P610**  
**PARTNER P541**

SERIAL NUMBER PREFIX 01

**CE**



March 2000

C 1	240851	MechLift	1	241473		C 83	241537	
C 2	241828	Primer	1	241537		C 84	241537	
B 3	240485		1	240485		B 3	240485	
B 4	240484		1	240484		B 4	240484	
C 4	227470		1	227470	MtA16	C 4	227470	
C 5	227456		1	227456		C 5	227456	
C 6	227471		1	227471		C 6	227471	
C 7	227457		1	227457		C 7	227457	
C 8	227458		1	227458		C 8	227458	
C 9	234550	MtA15	2	234550		C 9	234550	
C 10	234551	MtA15	2	234551		C 10	234551	
C 11	234552	MtA15	2	234552		C 11	234552	
C 12	234553	MtA15	2	234553		C 12	234553	
C 13	234554	MtA15	2	234554		C 13	234554	
C 14	234555	MtA15	2	234555		C 14	234555	
C 15	234556	MtA15	2	234556		C 15	234556	
C 16	234557	MtA15	2	234557		C 16	234557	
C 17	234558	MtA15	2	234558		C 17	234558	
C 18	234559	MtA15	2	234559		C 18	234559	
C 19	234560	MtA15	2	234560		C 19	234560	
C 20	234561	MtA15	2	234561		C 20	234561	
C 21	234562	MtA15	2	234562		C 21	234562	
C 22	234563	MtA15	2	234563		C 22	234563	
C 23	234564	MtA15	2	234564		C 23	234564	
C 24	234565	MtA15	2	234565		C 24	234565	
C 25	234566	MtA15	2	234566		C 25	234566	
C 26	234567	MtA15	2	234567		C 26	234567	
C 27	234568	MtA15	2	234568		C 27	234568	
C 28	234569	MtA15	2	234569		C 28	234569	
C 29	234570	MtA15	2	234570		C 29	234570	
C 30	234571	MtA15	2	234571		C 30	234571	
C 31	234572	MtA15	2	234572		C 31	234572	
C 32	234573	MtA15	2	234573		C 32	234573	
C 33	234574	MtA15	2	234574		C 33	234574	
C 34	234575	MtA15	2	234575		C 34	234575	
C 35	234576	MtA15	2	234576		C 35	234576	
C 36	234577	MtA15	2	234577		C 36	234577	
C 37	234578	MtA15	2	234578		C 37	234578	
C 38	234579	MtA15	2	234579		C 38	234579	
C 39	234580	MtA15	2	234580		C 39	234580	
C 40	234581	MtA15	2	234581		C 40	234581	
C 41	234582	MtA15	2	234582		C 41	234582	
C 42	234583	MtA15	2	234583		C 42	234583	
C 43	234584	MtA15	2	234584		C 43	234584	
C 44	234585	MtA15	2	234585		C 44	234585	
C 45	234586	MtA15	2	234586		C 45	234586	
C 46	234587	MtA15	2	234587		C 46	234587	
C 47	234588	MtA15	2	234588		C 47	234588	
C 48	234589	MtA15	2	234589		C 48	234589	
C 49	234590	MtA15	2	234590		C 49	234590	
C 50	234591	MtA15	2	234591		C 50	234591	
C 51	234592	MtA15	2	234592		C 51	234592	
C 52	234593	MtA15	2	234593		C 52	234593	
C 53	234594	MtA15	2	234594		C 53	234594	
C 54	234595	MtA15	2	234595		C 54	234595	
C 55	234596	MtA15	2	234596		C 55	234596	
C 56	234597	MtA15	2	234597		C 56	234597	
C 57	234598	MtA15	2	234598		C 57	234598	
C 58	234599	MtA15	2	234599		C 58	234599	
C 59	234600	MtA15	2	234600		C 59	234600	
C 60	234601	MtA15	2	234601		C 60	234601	
C 61	234602	MtA15	2	234602		C 61	234602	
C 62	234603	MtA15	2	234603		C 62	234603	
C 63	234604	MtA15	2	234604		C 63	234604	
C 64	234605	MtA15	2	234605		C 64	234605	
C 65	234606	MtA15	2	234606		C 65	234606	
C 66	234607	MtA15	2	234607		C 66	234607	
C 67	234608	MtA15	2	234608		C 67	234608	
C 68	234609	MtA15	2	234609		C 68	234609	
C 69	234610	MtA15	2	234610		C 69	234610	
C 70	234611	MtA15	2	234611		C 70	234611	
C 71	234612	MtA15	2	234612		C 71	234612	
C 72	234613	MtA15	2	234613		C 72	234613	
C 73	234614	MtA15	2	234614		C 73	234614	
C 74	234615	MtA15	2	234615		C 74	234615	
C 75	234616	MtA15	2	234616		C 75	234616	
C 76	234617	MtA15	2	234617		C 76	234617	
C 77	234618	MtA15	2	234618		C 77	234618	
C 78	234619	MtA15	2	234619		C 78	234619	
C 79	234620	MtA15	2	234620		C 79	234620	
C 80	234621	MtA15	2	234621		C 80	234621	
C 81	234622	MtA15	2	234622		C 81	234622	
C 82	234623	MtA15	2	234623		C 82	234623	

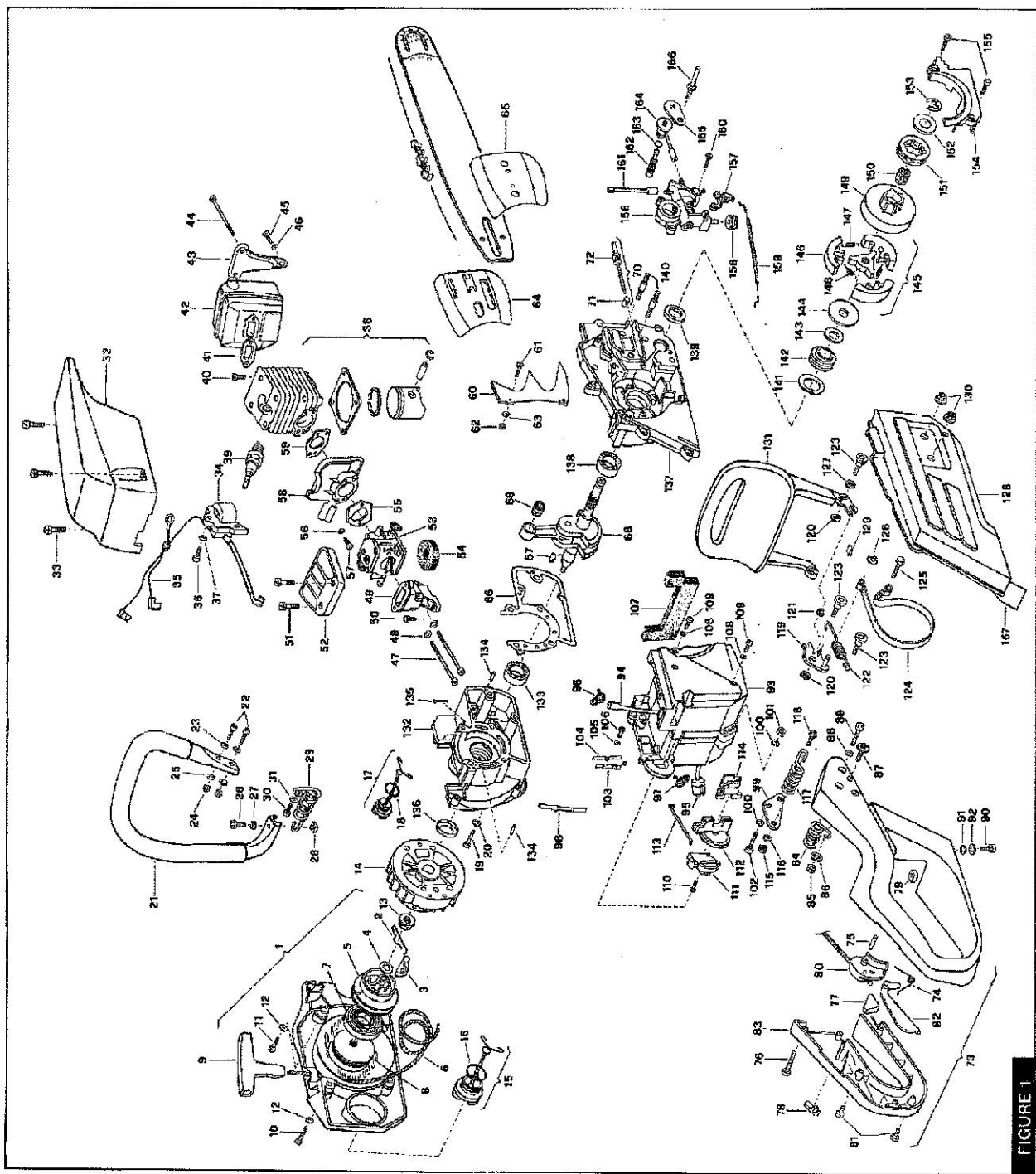


FIGURE 1

A - high moving - alta rotazione - grillo Nachfraga  
 B - low moving - medio rotazione - moyenne demance - mite Nachfraga  
 C - slow moving - bassa rotazione - Basse demance - wengig Nachfraga

	54 cc	C 1    227514    1 B 2    ● 227393    1 C 3    ● 227510    1 4    ●● 229544    2 B 5    ●● 227543    1 6    ●● 227344    1
	59 cc	C 1    227515    1 B 2    ● 227393    1 C 3    ● 227511    1 4    ●● 229544    2 B 5    ●● 227544    1 6    ●● 227344    1

**FIGURE 2**

<b>VALBRO WJ 82</b>		
C -    241311    carbur. B 1    ● 229925    1 A 2    ●● 237211    1 3    ● 229927    2 5    ● 237202 L    1 6    ● 229930 H    1 C 7    ● 237203    1 9    ● 240219    1 10    ● 240218    1		

**FIGURE 3**

A = high moving - alta rotazione - haute demande - große Nachfrage  
B = medium moving - media rotazione - moyenne demande - mittelmäßige Nachfrage  
C = slow moving - bassa rotazione - basse demande - wenige Nachfrage