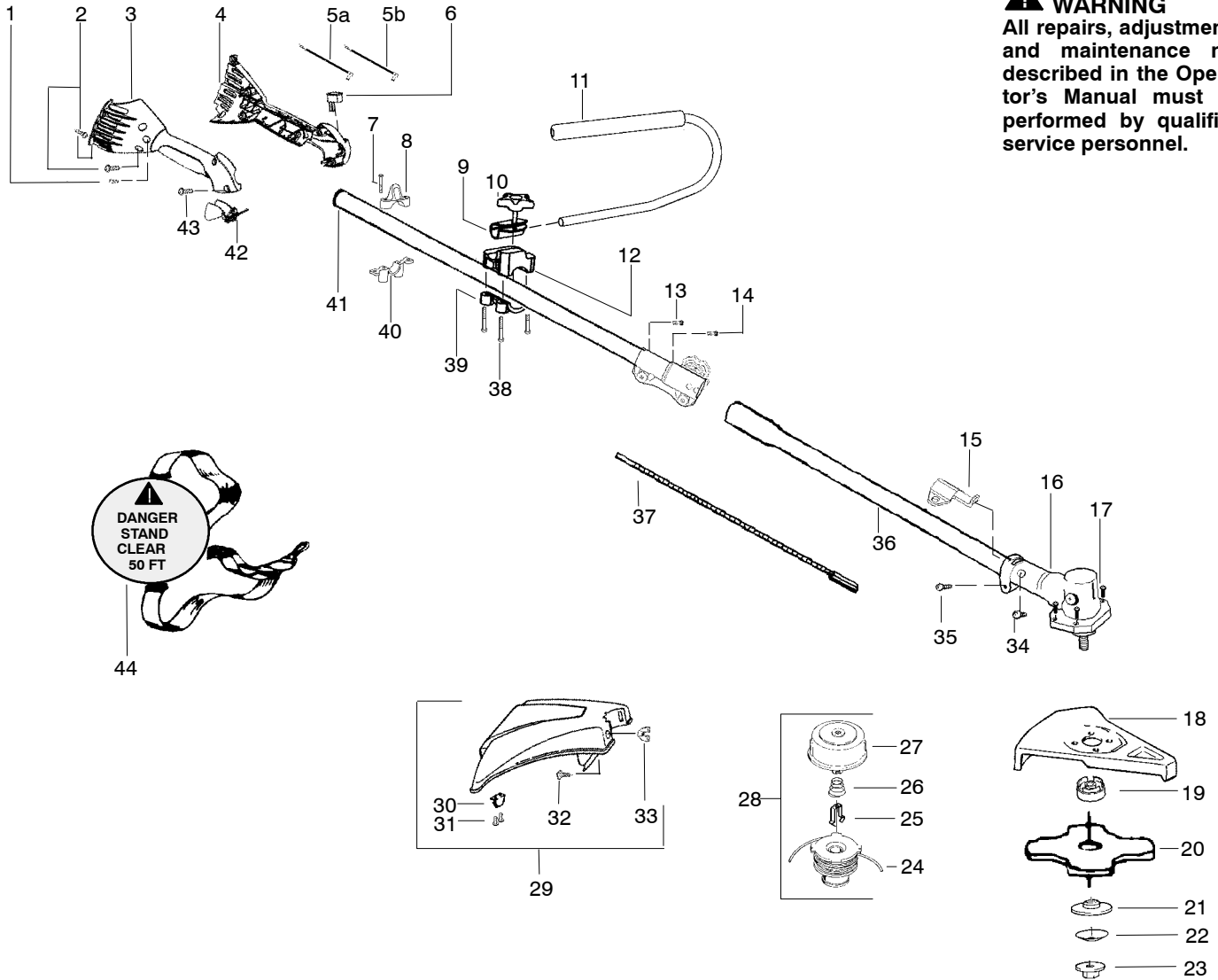


⚠ WARNING
All repairs, adjustments and maintenance not described in the Operator's Manual must be performed by qualified service personnel.

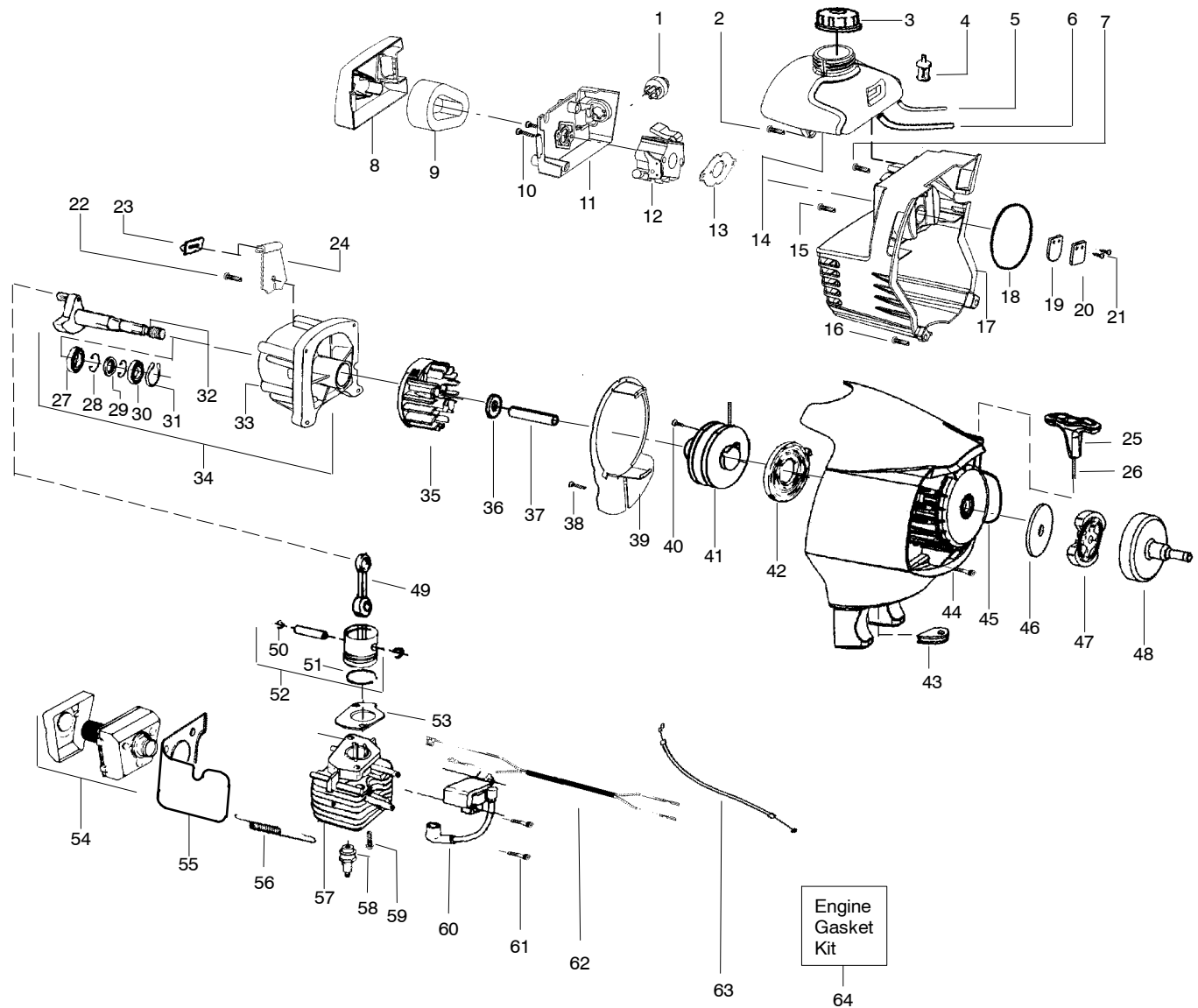


Ref.	Part No.	Description	Ref.	Part No.	Description	Ref.	Part No.	Description
1.	530015805	Screw-alignment	16.	530071585	Kit-Gearbox	35.	530016014	Screw
2.	530015886	Screw	17.	530016312	Screw	36.	530096023	Assy-Lower Shaft
3.	530054837	Throttle hsg-right	18.	530071383	Kit-Metal Shield	37.	530096183	Shaft-Flex (lower)
4.	530071553	Kit-Left throttle hsg	19.	530095815	Dust cup	38.	530015940	Screw
5.	----	Assy-Wire	20.	952711584	Accy.-Weed Blade	39.	530095905	Clamp-Tube
	530054943	(A)Assy-Front Wire	21.	530095816	Washer	40.	530055394	Clamp-Harness (lower)
	530055724	(B)Assy-Front Wire (Upper)	22.	530016240	Washer-Belleville	41.	530071607	Kit-Upper Shaft (Incl. Flex and clamp)
6.	530069572	Kit-Switch	23.	530015793	Nut-Flange	42.	530054940	Lever-Throttle
7.	530015770	Screw	24.	952711580	Accy-Wound Spool	43.	530015886	Screw
8.	530055392	Clamp-Harness (upper)	25.	530401957	Retainer-Spool	44.	530094417	Shoulder Strap
9.	530095970	Clamp-Handlebar	26.	530053241	Spring-Return			Not Shown
10.	530016336	Knob	27.	530095772	Assy-Hub/Arbor		530163727	Operator Manual
11.	530071394	Assy.-Handlebar (incl. grip, cap, decal)	28.	952711581	Accy-Cutting Head		530059209	Decal-Shaft Warning
12.	530095971	Base-Clamp	29.	530069779	Kit-Shield Assy. (incl. 30-33)		530056335	Decal-Blade Direction
13.	530016343	Screw-Align	30.	530052285	Limiters-Line		530057369	Decal-Start Inst.
14.	530016344	Screw	31.	530015805	Screw		530031159	Wrench-Hex 5/32"
15.	530095812	Bracket-Shield	32.	530015820	Bolt		530071717	Kit-Choke Lever
			33.	530016118	Wingnut			
			34.	530016224	Screw			

✓ = NEW PART NUMBER FOR THIS IPL

* = REFER TO THE SERVICE REFERENCE INDICATED FOR MORE INFORMATION. (LOCATED AT END OF IPL)

PARTS LIST NO. 530163747		Poulan PRO PARTS LIST	MODEL(s) PP335
DATE 10/07/03	Replaces 163747 - 6/17/03		Note: Illustration may differ from actual model due to design changes



Ref.	Part No.	Description	Ref.	Part No.	Description	Ref.	Part No.	Description
1.	530047721	Bulb-purge	23.	530055492	Isolator-fuel tank	44.	530015810	Screw-F/hsg
2.	530015843	Screw-tank	24.	530054941	Ret.-fuel tank	45.	530055248	Housing-Fan w/eyelet
3.	530049386	Assy-Fuel cap	25.	530054834	Handle-starter	46.	530094189	Washer-Clutch
4.	530095646	Assy-Fuel pick-up	26.	530071400	Kit-Rope	47.	530055122	Assy.-Clutch
5.	530071404	Kit-Fuel line	27.	530032103	Bearing-inner	48.	530028799	Assy-Drum
6.	530069216	Kit-Fuel/Purge line	28.	530015787	Retainer	49.	530010960	Assy-Connecting rod
7.	530015775	Screw	29.	530019158	Seal	50.	530015162	Retainer-piston pin
8.	530054935	Cover-Air box	30.	530032102	Bearing-outer	51.	530025875	Ring-Piston
9.	530054946	Filter-Air	31.	530015789	Retainer-crankshaft	52.	530069277	Kit-Piston
10.	530015849	Screw-carb.	32.	530054948	Assy-crankshaft	53.	530071401	Gasket-Cylinder (kit)
11.	530054934	Air Box	33.	530012514	Assy-crankcase	54.	530069310	Kit-Muffler
12.	530071637	Kit-Carb.(WT628)	34.	530071685	Assy-c'case/c'shaft	55.	530053346	Heat shield/air dam
13.	530071401	Gasket-Carb. (kit)	35.	530071402	Kit-Flywheel Assy.	56.	530036409	Spring-muffler
14.	530055317	Assy-Fuel tank	36.	530016030	Washer	57.	530071581	Kit-Cylinder
15.	530015771	Screw-crankcase	37.	530055620	Spacer	58.	952030249	Spark plug (RCJ-6Y)
16.	530015952	Screw-shrd to f/hsg.	38.	530015775	Screw-baffle	59.	530001624	Bolt-Cylinder
17.	530056044	Shroud	39.	530056864	Plate-baffle	60.	530039218	Module-Ignition
18.	530071401	O-ring-c/case (kit)	40.	530016391	Screw-rope	61.	530016357	Screw-module
19.	530027593	Valve-reed	41.	530071399	Kit-pulley (incl. #40)	62.	530057238	Assy-Rear wire
20.	530054596	Stop-reed	42.	530042086	Spring-starter	63.	530054942	Assy-Throttle Cable
21.	530016064	Screw-reed valve	43.	530019182	Grommet	64.	530071401	Kit-Gasket (Incl. 13,18,53)
22.	530015875	Screw-tank retainer						

✂ = NEW PART NUMBER FOR THIS IPL

★ = REFER TO THE SERVICE REFERENCE INDICATED FOR MORE INFORMATION. (LOCATED AT END OF IPL)